

14th Annual Texas Hereford Association

Fall Classic SALE

Wednesday, October 30, 2024 | 12 Noon

Buffalo Livestock Marketing, Inc.

Buffalo, Texas

Ask about our
FREE applicator
offer with your
first tag order

T&Cs apply

**Shearwell
Data**

Livestock Systems




**We have a full line of management and
USDA approved HDX electronic tags**



 **Multiple**
print layouts

 **Speedy**
dispatch

 **High quality**
products

 **Excellent**
retention

Contact the team 800-778-6014



Full range online shearwell.com



14th Annual Texas Hereford Association

Fall Classic SALE

Wednesday, October 30, 2024 | 12 Noon

Buffalo Livestock Marketing, Inc.

301 Commerce St. E. Buffalo, Texas

11:00 AM Lunch | 12 Noon Bull Sale

followed by Registered females, before commercial females
Buffalo Livestock Marketing, Inc Buffalo Texas
(1 mile east of Interstate 45 on Hwy 79)

Selling

53 Serviceable Age Hereford Bulls

Bred Registered Hereford Heifers
Red Angus Females

Bred & Open Commercial Hereford Females
Hereford Influenced Black Baldy Heifers
Brahman Females
Crossbred Females

Sale Barn: 903-322-4940

Auctioneer: Justin Stout, Overland Park, KS

Sale Representatives

EC Rosson/President	Texas Hereford Association	817-992-3152
Missy Coffelt	Texas Hereford Association	682-309-7555
Cody DeCordova	Buffalo Livestock Marketing	254-424-1736
Cord Weinheimer	Hereford World	830-456-3749
Ralph Means	Weekly Livestock Reporter	817-235-9708

Corporate Sponsors

Central Life Sciences
Gorman Milling Co, Inc.
Midcontinent Livestock Supplements
WW Livestock Systems

All persons who attend the sale do so at their own risk. The Texas Hereford Association and Buffalo Livestock Marketing, Inc. Assume no liability legal or otherwise, for any accidents.

Terms and Conditions

1. Terms, cash or check, unless otherwise arranged before sale.
2. The auctioneer will settle any dispute as to bids by declaring all bids off and reselling the animal in question.
3. Each animal will be at the purchaser's risk as soon as sold, but will not be delivered until settlement has been made for the same.
4. After being sold, the animals will be cared for until they are loaded out at the purchaser's risk of loss or injury. (For a period not to exceed 24 hours.)
5. Every breeder consigning cattle to this sale guarantees every animal he sells to be a breeder for a period of no longer than six months from this sale date. Bulls over 12 months of age will be fertility tested. Bred heifers and cows will be checked by a veterinarian.
6. All necessary tests for disease have been made and the animals are eligible to be shipped anywhere.
7. Prospective buyers who cannot be present at the sale may send their bids to either the auctioneer or any accredited representative
8. The Texas Hereford Association acts as agent only in the sale, Any guarantee is between consignor and buyer.
9. Cattle insurance is available to the buyer.

Sale Sponsored by

Texas Hereford Association | 817-247-1200

Missy Coffelt | 682-309-7555
4609 Airport Freeway Fort Worth, Texas 76117
texashereford4609@gmail.com
www.texashereford.org

Buffalo Livestock Marketing, Inc
Cody deCordova | 254-424-1736

HOW TO PARTICIPATE ON

LiveAuctions.TV

1

CREATE AN ACCOUNT

Click “Register to Bid” on the top right corner of LiveAuctions.tv. Fill out the required information to bid online. Agree to the terms of service and finish with the “register” button.

2

REGISTER FOR A BUYER NUMBER

From the home page or the “all auctions” page, choose the sale you’re interested in. Once selected, click the “request a buyer number” button. Verify your email address with the email verification link. To verify your mobile number, click “send token”. Follow the steps to authorize your mobile device and click “submit”.

3

BID SUCCESSFULLY

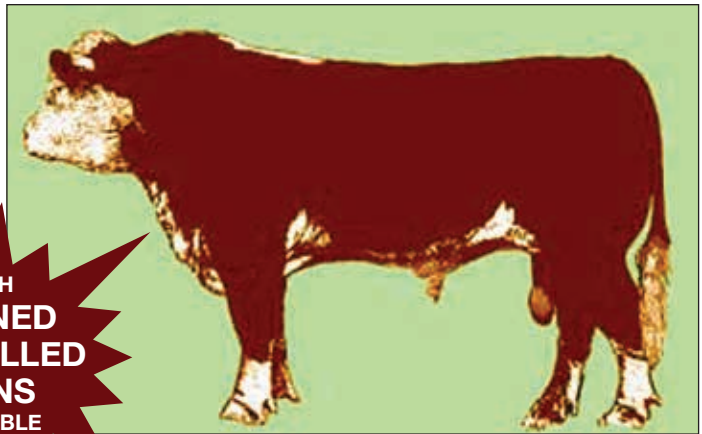
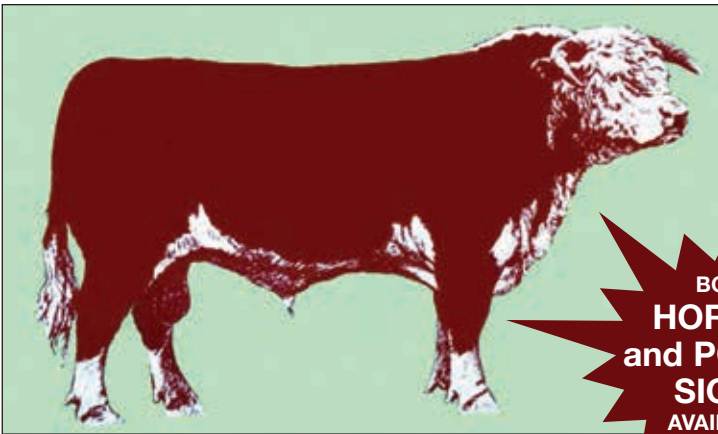
You will only have to complete the two-step verification process one time. After that, you will be able to immediately request a buyer number on any auction without verification. If you’re a winning bidder, your lots will appear in your cart on the bottom of your screen. You will be contacted by the ranch or sale manager for your payment and shipping plans.

IF YOU NEED HELP REGISTERING TO BID OR TO VIEW
THE AUCTION PLEASE CONTACT TECHNICAL SUPPORT

(682) 816-4900

OR

TECHSUPPORT@LIVEAUCTIONS.TV.



**BOTH
HORNED
and POLLED
SIGNS
AVAILABLE**

Hereford Spoken Here

That's exactly the message that this sizable sign projects!



Hardware pictured is not included.

- Constructed of sturdy 16 gauge steel and finished with a baked porcelain enamel, it will stand up to all weather conditions!
- Printed on both sides.
- The bull is on a green background, and the name panel is maroon with white lettering.
- Each one is a rich display of the Hereford breed.

The sign is available in two sizes:

- 30" tall x 38" wide or
- 38" tall x 60" wide

Name panel is available in two sizes:

- 10" tall for one or two lines
- 14" tall for three lines

Yes!

Send me:

Horned Polled

- 30"x 38" sign with 10"x 38" name panel @ \$650.00*
- 30"x 38" sign with 14"x 38" name panel @ \$735.00*
- 38"x 60" sign with 10"x 60" name panel @ \$1100.00*
- 38"x 60" sign with 14"x 60" name panel @ \$1185.00*

Price does not include shipping.

Freight charges will be billed after delivery.

All signs must be pre-paid by check or credit card.

Add 3% service charge for credit cards and contact THA office for link to pay.

All prices FOB Dallas, TX

*TEXAS RESIDENTS must add 8.25% sales tax.

Special art work for brands or special type billed at cost.

PLEASE PRINT LETTERING FOR NAME PLATE:

10" tall allows for 2 lines 14" tall allows for 3 lines

1st line _____

2nd line _____

3rd line _____

Ship by motor freight to: (must be physical address – no P.O. Boxes)

e-mail: _____

Phone # for questions _____

Please send completed form and check to:

Texas Hereford Association

817-831-3161 • <http://www.texashereford.org> • texashereford@sbcglobal.net

4609 Airport Freeway • Fort Worth, Texas 76117

C | O | N | S | I | G | N | O | R | S

S&I Hereford

Briggs, TX 512-608-8053

Circle H Headquarters, LLC

Dalhart, TX 806-333-2829

Steve Decker

Gilmer, TX 254-852-4310

Flying 5 Herefords

Hart, TX 806-774-7598

John Harper

Corsicana, TX, 903-654-3395

M5 Red Angus

Milford, TX 214-329-6044

Mulshoe Ranch

Breckenridge, TX 254-559-0156

Nolan Herefords

Gilmer TX 903-738-5636

O H Triangle Ranch

Mertzon, TX 805-709-2289

Pfluger Herefords

San Angelo, TX 830-765-0642

Prairie Rose Cattle I Co.

Waxahachie, TX 217-741-5500

Pratz Cattle Company

Stillwater, OK 405-385-1054

RK Hay & Cattle

Dodd City, TX 903-818-2908

Rocker B Ranch

Barnhart, TX 325-450-6395

Schlegel & Son

Olny, TX 940-256-8490

Smith Herefords Fairview Farms

George West, TX 830-255-9788

Spearhead Ranch

Copperas Cove, TX 254-289-7657

Texas A&M University-Commerce

Commerce, TX 940-550-8857 or 903-486-5285

White Rock Hereford Ranch

Milford, TX 817-992-3152

Zoeller Family Herefords

Gatesville, TX 254-223-4517, 254-223-4518

FROM THE MAKERS
OF HYDRA-STAT...

HYDRA-START
NEWBORN HYDRATION FORMULA

FOR ALL SPECIES OF NEWBORNS

- Developed using the original Hydra-STAT formula plus nutrient-rich bovine colostrum.
- Provides high-quality nutrition to newborn animals that may not receive adequate quantity/quality of colostrum at birth.
- Contains antibodies including 100 grams immunoglobulin G (IgG), vitamins and minerals to help develop immune systems.
- Contains high levels of natural colostrum fat for energy and regulate body temperatures.

HYDRA-STAT
LIVESTOCK CELL HYDRATION FORMULA

PRODUCT INFORMATION & ORDERING: WWW.HYDRASTAT-HYDRATE.COM

JEFF HOWARD: 325-721-6344

JEFF@HYDRASTAT-HYDRATE.COM

SWEETWATER, TX

FOLLOW US TODAY!  @HYDRASTATHYDRATION



1 SI H31 DEXTER C36 1L {DLF,HYF,IEF,MSUDF,MDF,DBF}

Calved 1/12/23 • #44447741 • Tattoo: S1L

SPEARHEAD X651 D-DAY D14 {CHB}{DLF,HYF,IEF,MSUDF}

SPEARHEAD D14 PHANTOM H31 {DLF,HYF,IEF,MSUDF,DBP}

SPEARHEAD 745 LAVERNA W8 {DOD}{DLF,HYF,IEF,DBP}

KCF BENNETT REVOLUTION X51 {SOD}{CHB}{DLF,HYF,IEF,MDF,DBF}

SPEARHEAD X51 BEAUTY C36 {DLF,HYF,IEF,DBP}

SPEARHEAD 4037 DURANGO GIRL Y79 {DBP}

CED	BW	WW	YW	DMI	SC	SCF	MILK	M&G	CEM
3.6	3	69	109	0.2	0.8	15.7	32	66	7.7
MCW	UDDR	TEAT	CW	FAT	REA	MARB	BMI	BII	CHB
132	1.2	1.1	73	-0.008	0.33	0.43	\$377	\$482	\$158

Consigned by **S&I Hereford, Steve Nuckles, Briggs, TX • 512-608-8053**



Lot #4

2 SI SHF FC ROMEO 71F 20K {DLF,HYF,IEF,MSUDF,MDF,DBF}

Calved 8/4/22 • #44387661 • Tattoo: S120K

EFBEEF BR VALIDATED B413 {SOD}{CHB}{DLF,HYF,IEF,MSUDF,MDF,DBF}

SHF FIRST CLASS B413 F156 {CHB}{DLF,HYF,IEF,MDF}

SHF CHEER Y83 B125 {DLF,HYF,IEF,MSUDF}

MCM 75A JACKPOT U208 4D {DLF,HYF,IEF,MSUDF}

MCM 31D FRISKY 4D 71F {MSUDP,DBP}

MCM 20Z SANGRIA 6Z 31D {MSUDP,DBP}

CED	BW	WW	YW	DMI	SC	SCF	MILK	M&G	CEM
6.2	0.7	55	95	0.5	0.8	18.8	27	55	6.1
MCW	UDDR	TEAT	CW	FAT	REA	MARB	BMI	BII	CHB
71	1.3	1.2	72	0.062	0.62	0.68	\$417	\$527	\$170

Consigned by **S&I Hereford, Steve Nuckles, Briggs, TX • 512-608-8053**

4 CHH EJD 8007 3022 {DBP}

Calved 3/9/23 • #44595180 • Tattoo: 3022

BR COPPER 124Y {DLF,HYF,IEF}

CHH JHD 124Y RED DIRT 8007 {DLF,HYF,IEF,MSUDF,MDF,DBP}

JCS SYLVIA 5934 {DLF,HYF,IEF,MSUDF,DBP}

JCS 5216 DOMINO 3548 {DLF,HYF,IEF}

CHH EJD MORNING GLORY 0013

CHH EJD MORNING GLORY 8008 {DLF,HYF,IEF}

CED	BW	WW	YW	DMI	SC	SCF	MILK	M&G	CEM
-2.4	5	66	103	0.6	0.9	15.7	25	57	-3.5
MCW	UDDR	TEAT	CW	FAT	REA	MARB	BMI	BII	CHB
100	1.35	1.35	70	-0.008	0.6	0.1	\$339	\$418	\$110

Consigned by

Circle H Headquarters LLC, Scanlon Daniels, Dalhart, TX • 806-333-2829



Lot #3

3 CHH EJD 8007 3001 {DBP}

Calved 1/1/23 • #44595173 • Tattoo: 3001

BR COPPER 124Y {DLF,HYF,IEF}

CHH JHD 124Y RED DIRT 8007 {DLF,HYF,IEF,MSUDF,MDF,DBP}

JCS SYLVIA 5934 {DLF,HYF,IEF,MSUDF,DBP}

SHF RIB EYE M326 R117 {SOD}{CHB}{DLF,HYF,IEF}

CHH EJD JASMINE 6026 {DLF,HYF,IEF,MSUDF,DBP}

C&M NEW MEXICO LADY 1012 {DLF,HYF,IEF,DBP}

CED	BW	WW	YW	DMI	SC	SCF	MILK	M&G	CEM
-1.3	3.9	52	83	0.4	0.7	14.9	20	46	-2
MCW	UDDR	TEAT	CW	FAT	REA	MARB	BMI	BII	CHB
62	1.2	1.3	63	-0.028	0.5	0.11	\$318	\$384	\$106

Consigned by

Circle H Headquarters LLC, Scanlon Daniels, Dalhart, TX • 806-333-2829



Lot #5

5 CHH EJD 8007 3052 {DBP}

Calved 3/28/23 • #44595186 • Tattoo: 3052

BR COPPER 124Y {DLF,HYF,IEF}

CHH JHD 124Y RED DIRT 8007 {DLF,HYF,IEF,MSUDF,MDF,DBP}

JCS SYLVIA 5934 {DLF,HYF,IEF,MSUDF,DBP}

UPS SENSATION 2296 ET {SOD}{DLF,HYF,IEF,MSUDF,MDF,DBC}

JCS 2296 MISS AMBER 6044 ET {DLF,HYF,IEF,MSUDF,DBP}

JCS MISS ROYALTY 6859 {DLF,HYF,IEF}

CED	BW	WW	YW	DMI	SC	SCF	MILK	M&G	CEM
1.4	3.1	58	90	0.5	0.9	19	26	55	-1.8
MCW	UDDR	TEAT	CW	FAT	REA	MARB	BMI	BII	CHB
92	1.35	1.4	69	0.012	0.43	0.15	\$386	\$464	\$112

Consigned by

Circle H Headquarters LLC, Scanlon Daniels, Dalhart, TX • 806-333-2829



Lot #6

6 CHH LMD 8007 2103 {DBP}

Calved 8/8/22 • #44393040 • Tattoo: 2103

BR COPPER 124Y {DLF,HYF,IEF}

CHH JHD 124Y RED DIRT 8007 {DLF,HYF,IEF,MSUDF,MDF,DBP}

JCS SYLVIA 5934 {DLF,HYF,IEF,MSUDF,DBP}

JCS CURRENCY 3474 ET {DLF,HYF,IEF}

JCS KITTY WELLS 5865 {DLF,HYF,IEF,MSUDF}

JCS MISS KITTY 2418 {DLF,HYF,IEF,MSUDF}

CED	BW	WW	YW	DMI	SC	SCF	MILK	M&G	CEM
-1.5	3.5	56	90	0.5	0.8	14.4	19	47	-4.1
MCW	UDDR	TEAT	CW	FAT	REA	MARB	BMI	BII	CHB
80	1.3	1.3	72	-0.008	0.48	0.03	\$313	\$378	\$107

Consigned by

Circle H Headquarters LLC, Scanlon Daniels, Dalhart, TX • 806-333-2829



Lot #8

8 CHH JHD 7002 2143 {DBP}

Calved 8/12/22 • #44595516 • Tattoo: 2143

BAR S LHF 028 240 {SOD}{CHB}{DLF,HYF,IEF}

CHH JHD 240 7002 {DLF,HYF,IEF,MSUDF,MDF,DBP}

JCS SYLVIA 5934 {DLF,HYF,IEF,MSUDF,DBP}

H FHF ADVANCE 628 ET {CHB}{DLF,HYF,IEF,MSUDF,MDF,DBF}

INNISFAIL VH 628 983E 010H ET {DLF,HYF,IEF,MSUDF,MDF,DBP}

KJ BJ 876A LEADING LADY 983E {DLF,HYF,IEF,MSUDF,MDF,DBC}

CED	BW	WW	YW	DMI	SC	SCF	MILK	M&G	CEM
4	2.8	56	85	0.3	0.9	18.3	31	59	2.8
MCW	UDDR	TEAT	CW	FAT	REA	MARB	BMI	BII	CHB
79	1.25	1.3	67	0.032	0.57	0.12	\$379	\$452	\$110

Consigned by

Circle H Headquarters LLC, Scanlon Daniels, Dalhart, TX • 806-333-2829



Lot #7

7 CHH DHD 2296 2231 {DBP}

Calved 10/11/22 • #44396869 • Tattoo: 2231

CHURCHILL SENSATION 028X {SOD}{DLF,HYF,IEF,MDF,DBF}

UPS SENSATION 2296 ET {SOD}{DLF,HYF,IEF,MSUDF,MDF,DBC}

UPS JT MISS NEON 7811 1ET {DLF,HYF,IEF,DBP}

H FHF ADVANCE 628 ET {CHB}{DLF,HYF,IEF,MSUDF,MDF,DBF}

CHH JHD 628 SPRINKLES 0113 {DBP}

CHH LH SPRINKLES 7190 {DBP}

CED	BW	WW	YW	DMI	SC	SCF	MILK	M&G	CEM
5	2.5	56	90	0.3	0.8	17.3	27	55	1.3
MCW	UDDR	TEAT	CW	FAT	REA	MARB	BMI	BII	CHB
98	1.3	1.4	80	0.062	0.8	0.03	\$376	\$443	\$119

Consigned by

Circle H Headquarters LLC, Scanlon Daniels, Dalhart, TX • 806-333-2829

9 SD DOUBLE 1024K

Calved 10/24/22 • #44477225 • Tattoo: 1024K

RST TIMES A WASTIN 0124 {SOD}{DLF,HYF,IEF}

NH SD DOUBLE TAP 1008E ET {DLF,HYF,IEF,MDF,DBF}

BR GOLDRIEL 3029 ET {DLF,HYF,IEF}

CRR ABOUT TIME 743 {SOD}{DLF,HYF,IEF,MDF}

SD MISS EVA 312G ET

GH 29F EVA 780T ET {DLF,HYF,IEF}

CED	BW	WW	YW	DMI	SC	SCF	MILK	M&G	CEM
13.6	-1.7	75	108	1.3	1.2	12.1	20	58	7.5
MCW	UDDR	TEAT	CW	FAT	REA	MARB	BMI	BII	CHB
116	1.4	1.4	94	-0.028	0.86	0	\$296	\$373	\$119

Long bodied bull with a 71 lb birth weight.

Consigned by **Steve Decker, Gilmer, TX • 254-852-4310**

Look sharp and support THA with a custom-made pocketknife by MooreMaker, Inc.



Stockman
3 blades
length 37/8" • \$145

Trapper

White with smooth bone handle • 2 blades
length 41/8" \$170



Proceeds benefit the Texas Hereford Association

To place your order, call **Missy Coffelt 682-309-7555** or send her an e-mail texashereford4609@gmail.com

Price includes state sales tax and shipping.



Lot #10

10 WF DUCK COMMANDER 9007 {DLP,HYP}
 Calved 10/31/22 • #44491901 • Tattoo: 124

LANGFORDS 5122 ET {DLF,HYF,IEF,MSUDF,DBP}
 M STUD DUCK 9007 {DLF,HYF,IEF,MSUDF,MDF,DBF}
 BR GENTRY 2115
 REBEL 556 {DLP,HYP}
 WF REBEL BABE {DLP,HYP}
 CH MS CORNERSTONE 420 {DLP,HYP}

CED	BW	WW	YW	DMI	SC	SCF	MILK	M&G	CEM
1	3.9	39	73	-0.1	0.5	10.2	18	37	2.1
MCW	UDDR	TEAT	CW	FAT	REA	MARB	BMI	BII	CHB
86	1.2	1.1	56	-0.018	0.24	0.02	\$246	\$292	\$101

Horned eye pigment this bull is stout, stout. He has good bone and lots of muscle.
 Consigned by **Flying 5 Herefords, Steve Whitaker, Hart, TX • 806-774-7598**



Lot #12

12 WF SITTING BULL 0026 {DLP,HYP}
 Calved 10/4/22 • #44491717 • Tattoo: 116

BOYD 31Z BLUEPRINT 6153 {DLF,HYF,IEF,MSUDF,MDF,DBF}
 RST NIMITZ 0026 {DLF,HYF,IEF,MSUDF}
 RS MS 51C RED BULL 8141 {DLF,HYF,IEF,MSUDF}
 L3 DIAMOND 679 {DLF,HYF,IEF}
 WF WHITS GOLDEN GAL {DLP,HYP}
 L3 LADY PREMIER 614 {DLP,HYP}

CED	BW	WW	YW	DMI	SC	SCF	MILK	M&G	CEM
2.8	3.6	53	91	0.2	1.2	16.1	24	50	2.1
MCW	UDDR	TEAT	CW	FAT	REA	MARB	BMI	BII	CHB
96	1.3	1.2	65	0.022	0.43	0.03	\$342	\$405	\$107

This bull has lots of body and big boned. Clean fronted with lots of muscle.
 Consigned by **Flying 5 Herefords, Steve Whitaker, Hart, TX • 806-774-7598**



Lot #11

11 WF GONE TO TOWN 0026 {DLP,HYP}
 Calved 2/12/23 • #44494486 • Tattoo: 136

BOYD 31Z BLUEPRINT 6153 {DLF,HYF,IEF,MSUDF,MDF,DBF}
 RST NIMITZ 0026 {DLF,HYF,IEF,MSUDF}
 RS MS 51C RED BULL 8141 {DLF,HYF,IEF,MSUDF}
 L3 RAM BOY 821 ET {DLF,HYF,IEF}
 4T 821 LADY 2062 {DLP,HYP}
 L3 MISS MEGA 152 {DLP,HYP}

CED	BW	WW	YW	DMI	SC	SCF	MILK	M&G	CEM
4.9	3.2	46	83	0	1.1	16	23	46	4.1
MCW	UDDR	TEAT	CW	FAT	REA	MARB	BMI	BII	CHB
89	1.3	1.3	66	0.012	0.48	0	\$345	\$399	\$111

Polled bull with muscle and bone to spare. Big topped with some pigment.
 Consigned by **Flying 5 Herefords, Steve Whitaker, Hart, TX • 806-774-7598**

13 GR 901 ANODIZE K11
 Calved 8/23/22 • #44422168 • Tattoo: K11

GERBER ANODYNE 001A {SOD}{CHB}{DLF,HYF,IEF,MSUDF}
 GR ANODIZE 2568 {CHB}{DLF,HYF,IEF,MSUDF,MDF,DBF}
 GR MISS WRANGLER 1546 {HYP,DBP}
 NJW 98S R117 RIBEYE 88X ET {SOD}{DLF,HYF,IEF,MSUDF,MDF,DBF}
 6MC 7076 LADY RIBEYE 901
 C LADY WILDCAT 7076 {DLF,HYF,IEF}

CED	BW	WW	YW	DMI	SC	SCF	MILK	M&G	CEM
5	2.7	60	91	0.4	0.9	15.8	31	61	0.3
MCW	UDDR	TEAT	CW	FAT	REA	MARB	BMI	BII	CHB
75	1	1.2	70	0.002	0.47	0.28	\$351	\$437	\$130

Consigned by **G&R Herefords, Rod Woodson, Conroe TX • 936-499-5196**

14 NH DOUBLE K1008 {DBP}
 Calved 10/28/22 • #44477155 • Tattoo: K1008

RST TIMES A WASTIN 0124 {SOD}{DLF,HYF,IEF}
 NH SD DOUBLE TAP 1008E ET {DLF,HYF,IEF,MDF,DBF}
 BR GOLDRIEL 3029 ET {DLF,HYF,IEF}
 UPS SENSATION 2296 ET {SOD}{DLF,HYF,IEF,MSUDF,MDF,DBC}
 MISS SENATION F1104 {DBP}
 NH MISS LA CASA D801 {DBP}

CED	BW	WW	YW	DMI	SC	SCF	MILK	M&G	CEM
16.8	-2.8	74	105	1.4	1.3	13.8	26	63	9.3
MCW	UDDR	TEAT	CW	FAT	REA	MARB	BMI	BII	CHB
113	1.4	1.4	100	0.012	0.96	0.08	\$329	\$413	\$130

A smooth made bull with a 70 lb birth weight.
 Consigned by **Nolan Herefords, Scott Nolan, Gilmer, TX • 903-738-5636**

15 NH DUM2AS L10 {IEP,DBP}

Calved 1/2/23 • #44524258 • Tattoo: L102

BAR S LHF 028 240 {SOD}{CHB}{DLF,HYF,IEF}

BR DUMAS WALKER E098 ET {DLF,HYF,IEF,MDF,DBF}

BR BELLE 4082 ET {DLF,HYF,IEF,MSUDF}

BR NITRO AVENTUS 3116 ET {DLF,HYF,IEF,DBP}

NH SCARLET D810 {IEP,DBP}

NH MS ACHIEVER W106 {IEP}

CED	BW	WW	YW	DMI	SC	SCF	MILK	M&G	CEM
7.9	1.5	62	102	0.6	1.3	14.7	29	60	5.4
MCW	UDDR	TEAT	CW	FAT	REA	MARB	BMI	BII	CHB
113	1.3	1.3	77	0.032	0.49	0.29	\$341	\$430	\$137

A bull which is red to the ground, well balanced, and strong material pedigree with a 82 for birth weight.

Consigned by **Nolan Herefords, Scott Nolan, Gilmer, TX • 903-738-5636**

16 NH DOUBLE L301 {DBP}

Calved 3/16/23 • #44488675 • Tattoo: L301

RST TIMES A WASTIN 0124 {SOD}{DLF,HYF,IEF}

NH SD DOUBLE TAP 1008E ET {DLF,HYF,IEF,MDF,DBF}

BR GOLDRIEL 3029 ET {DLF,HYF,IEF}

KJ BJ 58Z CONTENDER D56 ET {CHB}{DLF,HYF,IEF,MSUDF,MDF,DBC}

NH MISS CONTENDER H1004 ET {DBP}

BR 124Y ALAINNA 4138 {DLF,HYF,IEF}

CED	BW	WW	YW	DMI	SC	SCF	MILK	M&G	CEM
12.4	-1.6	73	103	1.3	1.1	13.4	23	60	5.7
MCW	UDDR	TEAT	CW	FAT	REA	MARB	BMI	BII	CHB
105	1.4	1.5	101	0.012	0.88	0.11	\$325	\$410	\$135

A big bone bull with power and muscle, a birth weight of 80 lbs.

Consigned by **Nolan Herefords, Scott Nolan, Gilmer, TX • 903-738-5636**

17 NH DOUBLE L302 {DBP}

Calved 3/18/23 • #44488673 • Tattoo: L302

RST TIMES A WASTIN 0124 {SOD}{DLF,HYF,IEF}

NH SD DOUBLE TAP 1008E ET {DLF,HYF,IEF,MDF,DBF}

BR GOLDRIEL 3029 ET {DLF,HYF,IEF}

BR DUMAS WALKER E098 ET {DLF,HYF,IEF,MDF,DBF}

NH MISS EMILY J501 {DBP}

NH MACY E1001 {DBP}

CED	BW	WW	YW	DMI	SC	SCF	MILK	M&G	CEM
16.6	-3.3	76	108	1.5	1.6	14.6	28	66	9.9
MCW	UDDR	TEAT	CW	FAT	REA	MARB	BMI	BII	CHB
123	1.4	1.5	99	0.012	0.9	0.19	\$343	\$437	\$135

A well balanced big ribbed bull with eye appeal. A birth weight of 72 lbs.

Consigned by **Nolan Herefords, Scott Nolan, Gilmer, TX • 903-738-5636**

18 NH DOUBLE L304 {DBP}

Calved 3/11/23 • #44488678 • Tattoo: L304

RST TIMES A WASTIN 0124 {SOD}{DLF,HYF,IEF}

NH SD DOUBLE TAP 1008E ET {DLF,HYF,IEF,MDF,DBF}

BR GOLDRIEL 3029 ET {DLF,HYF,IEF}

AA HRD CHUCKWAGON 0138 {DLF,HYF,IEF,DBP}

NH VELVET H1101 {DBP}

NH VELVET E1101 {DBP}

CED	BW	WW	YW	DMI	SC	SCF	MILK	M&G	CEM
14	-2.5	71	97	1.2	1.2	11.6	25	61	7.9
MCW	UDDR	TEAT	CW	FAT	REA	MARB	BMI	BII	CHB
110	1.4	1.5	97	-0.008	0.88	0.11	\$298	\$380	\$132

This bull has plenty of muscle expression and extremely docile. Birth weight of 73 lbs.

Consigned by **Nolan Herefords, Scott Nolan, Gilmer, TX • 903-738-5636**



19 OHT 814 HIDALGO SENSATION 246

Calved 9/7/22 • #44387557 • Tattoo: 246K

SR SUSTAIN 782Z {DLF,HYF,IEF}

OHT 782 SENSATION 814F {DLF,HYF,IEF,MSUDF}

DC NEON DOMINETTE 140 {DOD}{IEP}

DC 860U TUFF STUFF 102 {DLF,HYF,IEF}

DC MS 102 420 HIDALGO 605

DC MS 420 HIDALGO 014 {DOD}

CED	BW	WW	YW	DMI	SC	SCF	MILK	M&G	CEM
7.9	1	44	88	0.2	1.3	9.8	32	54	6.1
MCW	UDDR	TEAT	CW	FAT	REA	MARB	BMI	BII	CHB
77	1.2	1.2	61	0.012	0.24	0.14	\$248	\$307	\$116

Consigned by **OH Triangle Ranch, Ryan Akers, Mertzon, TX • 805-709-2289**



20 OHT 814 SENS MIGHTY YANKEE 253

Calved 9/20/22 • #44389898 • Tattoo: 253K

SR SUSTAIN 782Z {DLF,HYF,IEF}

OHT 782 SENSATION 814F {DLF,HYF,IEF,MSUDF}

DC NEON DOMINETTE 140 {DOD}{IEP}

B&C MIGHTY 7053E {DLF,HYF,IEF,MSUDF}

OHT 7053 MIGHTY YANKEE DOM 017

DC MS 315 YANKEE DOM 735 {DOD}

CED	BW	WW	YW	DMI	SC	SCF	MILK	M&G	CEM
5.8	2.4	52	93	0.5	1.3	14.2	36	62	2.5
MCW	UDDR	TEAT	CW	FAT	REA	MARB	BMI	BII	CHB
70	1.2	1.3	70	0.012	0.41	0.14	\$316	\$386	\$119

Consigned by **OH Triangle Ranch, Ryan Akers, Mertzon, TX • 805-709-2289**



Lot #21

21 OHT 9650 NEON BOXCAR 242 {HYP}
 Calved 9/5/22 • #44407110 • Tattoo: 242K

BR SOONER THAN LATER 5541 ET {DLF,HYF,IEF,MSUDF}
 M BOXCAR 9650 {DLF,HYF,IEF,MSUDF}
 BR DANIELLE 2165
 CHURCHILL DOMINO 477B {DLF,HYF,IEF,MSUDF}
 OHT 477 NEON CHURCH DOM 025 {HYP}
 DC MS NEON YANKEE 129 {HYP}

CED	BW	WW	YW	DMI	SC	SCF	MILK	M&G	CEM
7.9	1.7	48	75	0.2	0.6	13.8	26	50	4.6
MCW	UDDR	TEAT	CW	FAT	REA	MARB	BMI	BII	CHB
74	1.2	1.3	74	0.002	0.5	0.04	\$314	\$372	\$116

Consigned by **OH Triangle Ranch, Ryan Akers, Mertzon, TX • 805-709-2289**



Lot #23

23 OHT 7053 MIGHTY YANKEE 262 {HYP}
 Calved 10/1/22 • #44394078 • Tattoo: 262K

NJW 79Z 22Z MIGHTY 49C ET {SOD}{DLF,HYF,IEF,MSUDF,MDF}
 B&C MIGHTY 7053E {DLF,HYF,IEF,MSUDF}
 B&C MISS L1 DOM 2039Z
 DC 8108 HARLAND 315 {DLF,HYF,IEF}
 DC MS 315 YANKEE SENSATION 736 {HYP}
 SR SENITA 291Z {DOD}{HYP}

CED	BW	WW	YW	DMI	SC	SCF	MILK	M&G	CEM
2.2	3.8	57	89	0.5	1.4	14.7	28	57	-0.8
MCW	UDDR	TEAT	CW	FAT	REA	MARB	BMI	BII	CHB
90	1.3	1.3	75	0.012	0.5	0.04	\$325	\$392	\$111

Consigned by **OH Triangle Ranch, Ryan Akers, Mertzon, TX • 805-709-2289**



Lot #22

22 OHT 9650 BOXCAR DOMINO 258 {HYP}
 Calved 9/23/22 • #44408090 • Tattoo: 258K

BR SOONER THAN LATER 5541 ET {DLF,HYF,IEF,MSUDF}
 M BOXCAR 9650 {DLF,HYF,IEF,MSUDF}
 BR DANIELLE 2165
 CHURCHILL DOMINO 477B {DLF,HYF,IEF,MSUDF}
 OHT MS 477 DOMINO 805F {HYP}
 DC MISS 208 SENSATION 427 {DOD}{HYP}

CED	BW	WW	YW	DMI	SC	SCF	MILK	M&G	CEM
6.1	2.7	52	84	0.3	0.9	16.4	27	53	3.4
MCW	UDDR	TEAT	CW	FAT	REA	MARB	BMI	BII	CHB
62	1.2	1.2	73	0.012	0.53	0.02	\$347	\$409	\$112

Consigned by **OH Triangle Ranch, Ryan Akers, Mertzon, TX • 805-709-2289**



Lot #24

24 PH L1 DOMINO 247K {DLF,HYF,IEF,MSUDF}
 Calved 12/10/22 • #44500083 • Tattoo: 247

HH ADVANCE 7156E ET {CHB}{DLF,HYF,IEF,MSUDF}
 CL 1 DOMINO 9129G 1ET {DLF,HYF,IEF,MSUDF}
 CL 1 DOMINETTE 055X {DOD}{DLF,HYF,IEF}
 HH ADVANCE 2181Z {SOD}{DLF,HYF,IEF}
 CTR L1 DOMINETTE 5059C
 MONTANA MISS 9153W {DOD}

CED	BW	WW	YW	DMI	SC	SCF	MILK	M&G	CEM
1.4	3.2	59	92	0.3	1.2	17.1	26	56	2.1
MCW	UDDR	TEAT	CW	FAT	REA	MARB	BMI	BII	CHB
98	1.2	1.3	66	0.002	0.24	-0.12	\$341	\$403	\$85

Consigned by

Pfluger Herefords, Walter Pfluger, San Angelo, TX • 830-765-0642



Lot #25

25 PH L1 DOMINO 243K {DLF,HYF,IEF,MSUDF}
 Calved 10/25/22 • #44488232 • Tattoo: 243

CL 1 DOMINO 7131E 1ET {DLF,HYF,IEF,MSUDF}
 CL 1 DOMINO 992G 1ET {DLF,HYF,IEF,MSUDF,MDF}
 HH MISS ADVANCE 9119W {DLF,HYF,IEF}
 CO L1 DOMINO 946W {DLF,HYF,IEF}
 JA L1 DOMINETTE 3515A
 JA L1 DOMINETTE 1606Y {DOD}

CED	BW	WW	YW	DMI	SC	SCF	MILK	M&G	CEM
4.5	1.4	48	83	-0.3	1.1	18.2	38	61	3.7
MCW	UDDR	TEAT	CW	FAT	REA	MARB	BMI	BII	CHB
70	1.3	1.4	73	0.012	0.38	0.13	\$398	\$466	\$138

Consigned by
Pfluger Herefords, Walter Pfluger, San Angelo, TX • 830-765-0642



Lot #26

26 PRCC STRIKEFORCE 248K {DBP}
 Calved 11/5/22 • #44470254 • Tattoo: PRCC248K

GKB 88X BRYSON 37B ET {DLF,HYF,IEF,MSUDF,DBP}
 GKB PRCC SANDSTORM 8132 {DLF,HYF,IEF,MSUDF,MDF,DBP}
 GKB EJE NOTICE ME TOO 41A ET {DLF,HYF,IEF,MSUDF,DBP}
 C SPOT ON 6128 ET {DLF,HYF,IEF,MSUDF}
 PRCC JENNY 9110 ET
 C&M NEW MEXICO LADY 0011 {DLF,HYF,IEF}

CED	BW	WW	YW	DMI	SC	SCF	MILK	M&G	CEM
2.9	2.5	56	85	0.2	0.7	13.1	25	54	-0.6
MCW	UDDR	TEAT	CW	FAT	REA	MARB	BMI	BII	CHB
105	1.3	1.3	73	-0.018	0.58	0.01	\$311	\$374	\$115

PRCC STRIKEFORCE 248K has been a dominant force on our show string over the past year. He earned multiple accolades including Champion Horned Hereford Bull at the 2023 World Beef Expo, Champion in his respective division multiple times, and rounded out the year by being named the North Eastern Region Hereford Show Bull of the Year. This 88X grandson has the look and performance to progress any cow herd. He comes nearly flawless in terms of head shape and horn set, that further enhance his masculine look. This stout, square footed bull reads with more than enough genuine substance and power that a herd sire should possess. Take a moment and look at this bull's pedigree, he is backed by well renowned genetics. Here is your next herdsire, PRCC STRIKEFORCE 248K.

Consigned by
Prairie Rose Cattle Co., Fred Nessler, Waxahachie, TX • 217-741-5500

27 OAKS GUARDIAN 3011 ET {DLF,HYF,IEF,MSUDF,MDF,DBF}
 Calved 1/9/23 • #44543016 • Tattoo: OAKS3011

LOEWEN GENESIS G16 ET {CHB}{DLF,HYF,IEF,MDF,DBF}
 C GKB GUARDIAN 1015 ET {CHB}{DLF,HYF,IEF,MSUDF,MDF,DBF}
 C CJC BELLE AIR LASS 8037 ET {DLF,HYF,IEF,MSUDF,MDF,DBF}
 C DOUBLE YOUR MILES 6077 ET {DLF,HYF,IEF,MSUDF}
 OAKS KIT KAT 0004ET {DLF,HYF,IEF,MSUDF,DBP}
 OAKS SWEET TART 4067 ET {DLF,HYF,IEF,MSUDF,DBP}

CED	BW	WW	YW	DMI	SC	SCF	MILK	M&G	CEM
3.5	2.4	57	87	0.6	0.5	18.6	28	57	0
MCW	UDDR	TEAT	CW	FAT	REA	MARB	BMI	BII	CHB
77	1.2	1.2	70	0.032	0.59	0.43	\$395	\$490	\$136

Lot #27 is sired by C GKB GUARDIAN 1015 ET.
 Consigned by
Pratz Cattle Company, Colton Pratz, Stillwater, OK • 405-385-1054

There's no
 such thing
 as a free lunch.

Oh, wait a minute... yes there is.

Today's lunch was provided
 compliments of our friends at



Thanks guys!

28 OAKS GUARDIAN 3019 ET {DLF,HYF,IEF,MSUDF,MDF,DBF}

Calved 2/3/23 • #44543019 • Tattoo: OAKS3019

LOEWEN GENESIS G16 ET {CHB}{DLF,HYF,IEF,MDF,DBF}

C GKB GUARDIAN 1015 ET {CHB}{DLF,HYF,IEF,MSUDF,MDF,DBF}

C CJC BELLE AIR LASS 8037 ET {DLF,HYF,IEF,MSUDF,MDF,DBF}

C DOUBLE YOUR MILES 6077 ET {DLF,HYF,IEF,MSUDF}

OAKS STARBURST 0015 ET {DLF,HYF,IEF,MSUDF,MDF,DBF}

OAKS SWEET TART 4067 ET {DLF,HYF,IEF,MSUDF,DBP}

CED	BW	WW	YW	DMI	SC	SCF	MILK	M&G	CEM
1.2	3.4	57	93	0.6	1.4	23.4	25	54	-4.7
MCW	UDDR	TEAT	CW	FAT	REA	MARB	BMI	BII	CHB
61	1.5	1.6	69	0.032	0.56	0.11	\$442	\$521	\$107

Lot #28 is sired by C GKB GUARDIAN 1015 ET.

Consigned by

Pratz Cattle Company, Colton Pratz, Stillwater, OK • 405-385-1054



Lot #29

29 RKF BENTON LADY 008X184 {DLF,HYF,IEF,MSUDF}

Calved 10/6/22 • #44427913 • Tattoo: 1015K

JDH 11B STUD 3134 63E {CHB}{DLF,HYF,IEF,MSUDF,MDF,DBF}

JDH AH BENTON 8G ET {CHB}{DLF,HYF,IEF,MSUDF,MDF,DBF}

JDH AH MS 34X VICTOR 33Z45C ET {DLF,HYF,IEF,MSUDF}

HYALITE PROFESSIONAL 153 {CHB}{DLF,HYF,IEF,MSUDF}

RKF LADY PROFESSIONAL

DHR 1449 ADVANCE DOMINO 848

CED	BW	WW	YW	DMI	SC	SCF	MILK	M&G	CEM
3.5	3	73	123	0.5	1.1	20.7	28	65	1.8
MCW	UDDR	TEAT	CW	FAT	REA	MARB	BMI	BII	CHB
107	1.4	1.4	94	0.002	0.71	0.4	\$468	\$577	\$184

Presenting Lot #29, a dark red goggle-eyed bull that's the epitome of Hereford excellence. This bull stands out not just for his striking appearance, but also for his exceptional performance. He is breed average for calving ease and birthweight, making him a reliable choice for easy calving. But where he really shines is in his growth metrics, ranking in the top 3% for weaning weight and the top 2% for yearling weight. This bull will bring exceptional growth and vigor to your herd, making him a top pick for any serious cattleman looking to improve herd performance.

Consigned by **RK Hay & Cattle, Russell Kaker, Dodd City, TX • 903-818-2908**

Thanks to all sale attendees,
especially our consignors,
buyers, bidders and... all the staff.

We really appreciate your support.



Lot #30

30 RKF BENTON PERFT 060X184 {DLF,HYF,IEF,MSUDF}

Calved 10/6/22 • #44427914 • Tattoo: 1016KKKK

JDH 11B STUD 3134 63E {CHB}{DLF,HYF,IEF,MSUDF,MDF,DBF}

JDH AH BENTON 8G ET {CHB}{DLF,HYF,IEF,MSUDF,MDF,DBF}

JDH AH MS 34X VICTOR 33Z45C ET {DLF,HYF,IEF,MSUDF}

KCF BENNETT REVOLUTION X51 {SOD}{CHB}{DLF,HYF,IEF,MDF,DBF}

PERFECTA SRR 238 {DLF,HYF,IEF}

L1 MS DOMINETTE 3527 {DLF,HYF,IEF}

CED	BW	WW	YW	DMI	SC	SCF	MILK	M&G	CEM
-4	5	65	103	0.2	0.7	13.2	29	62	2.2
MCW	UDDR	TEAT	CW	FAT	REA	MARB	BMI	BII	CHB
143	1.2	1.2	109	-0.008	1.13	0.51	\$398	\$499	\$216

Lot #30 is a well-balanced horned bull that exemplifies Hereford quality. This bull brings together muscularity and structural correctness in a way that's hard to beat. He's excellent in growth traits, guaranteeing that he'll add pounds, carcass quality, and eye appeal to your calves. His steady temperament and solid lineage make him a dependable choice for breeders. If you're aiming to boost your herd's overall performance, Tag 26 is your bull.

Consigned by **RK Hay & Cattle, Russell Kaker, Dodd City, TX • 903-818-2908**



Lot #31

31 RKF BENTON BLISS 79X184 {DLF,HYF,IEF,MSUDF}

Calved 10/14/22 • #44432268 • Tattoo: 1017K

JDH 11B STUD 3134 63E {CHB}{DLF,HYF,IEF,MSUDF,MDF,DBF}

JDH AH BENTON 8G ET {CHB}{DLF,HYF,IEF,MSUDF,MDF,DBF}

JDH AH MS 34X VICTOR 33Z45C ET {DLF,HYF,IEF,MSUDF}

SPEARHEAD R117 BRIGADIER X16 {CHB}{DLF,HYF,IEF,MDF,DBF}

RED BLISS SRR 502 {DLF,HYF,IEF,MSUDF}

PERFECTA SRR 303 {DLF,HYF,IEF,MSUDF}

CED	BW	WW	YW	DMI	SC	SCF	MILK	M&G	CEM
3.9	2.1	68	109	0.1	1.6	16.9	32	66	4.5
MCW	UDDR	TEAT	CW	FAT	REA	MARB	BMI	BII	CHB
119	1.3	1.3	83	0.032	0.48	0.2	\$392	\$483	\$149

Lot #31 is a powerhouse horned bull, perfect for cattlemen who prioritize depth and strength. This deep-bodied, big-hipped bull is built for superior meat production, boasting a substantial frame and powerful hindquarters. He comes with top growth numbers, ensuring he'll add significant pounds and value to your calves. With his robust genetic profile, Lot #31 promises to enhance growth rates and carcass quality, making him a valuable addition to any herd focused on productivity and profitability.

Consigned by **RK Hay & Cattle, Russell Kaker, Dodd City, TX • 903-818-2908**

32 RBR 215Z BULLDOGGER 202K {DLF,HYF,IEF,MSUDF}

Calved 9/15/22 • #44402116 • Tattoo: 202K

CL 1 DOMINO 9122W 1ET {DLF,HYF,IEF}

CL 1 DOMINO 215Z {SOD}{CHB}{DLF,HYF,IEF,MSUDF,MDF}

CL 1 DOMINETTE 055X {DOD}{DLF,HYF,IEF}

IMR 408 HARLAND 9038W ET {SOD}{DLF,HYF,IEF}

IMR 9038W MISS ADVANCE 4101B {DLF,HYF,IEF}

IMR 8521 DOMINETTE 0091X {HYF,IEP}

CED	BW	WW	YW	DMI	SC	SCF	MILK	M&G	CEM
8	0	50	75	0	0.6	15.8	25	50	9.5
MCW	UDDR	TEAT	CW	FAT	REA	MARB	BMI	BII	CHB
115	1.1	1.1	95	0.082	0.35	0.36	\$384	\$469	\$168

Consigned by **Rocker B Ranch, Cody Webb, Barnhart, TX • 325-450-6395**

36 RBR 910G DOMINO 213K {DLF,HYF,IEF,MSUDF}

Calved 10/8/22 • #44398811 • Tattoo: 213K

CL 1 DOMINO 215Z {SOD}{CHB}{DLF,HYF,IEF,MSUDF,MDF}

RBR 215Z ADVANCE 910G {CHB}{DLF,HYF,IEF,MSUDF}

IMR 9038W MISS ADVANCE 4101B {DLF,HYF,IEF}

CL1 DOMINO 5183C {DLF,HYF,IEF,MSUDF}

IMR L1 5183C DOMINETTE 8129F {DLF,HYF,IEF,MSUDF}

IMR L1 955W DOMINETTE 3079A

CED	BW	WW	YW	DMI	SC	SCF	MILK	M&G	CEM
0.9	4.5	58	92	0	0.9	7	31	60	3
MCW	UDDR	TEAT	CW	FAT	REA	MARB	BMI	BII	CHB
102	1.2	1.2	78	0.062	0.21	0.18	\$229	\$304	\$132

Consigned by **Rocker B Ranch, Cody Webb, Barnhart, TX • 325-450-6395**

33 RBR 428 MANHATTAN SKYLINE 203K {DLF,HYF,IEF,MSUDF,DBP}

Calved 9/14/22 • #44399964 • Tattoo: 203K

CHURCHILL SENSATION 028X {SOD}{DLF,HYF,IEF,MDF,DBP}

CHURCHILL MANHATTAN 428B ET {DLF,HYF,IEF,DBP}

CHURCHILL LADY 002X ET {DLF,HYF,IEF,MSUDF,MDF,DBP}

IMR 3128A ADVANCE 5008C {DLF,HYF,IEF,MSUDF}

IMR 5008C MISS ADVANCE 9005G {DLF,HYF,IEF,MSUDF}

IMR 2037Z MISS ADVANCE 7033E {IEP}

CED	BW	WW	YW	DMI	SC	SCF	MILK	M&G	CEM
13.8	-0.6	51	75	0.2	0.7	22	32	58	5.4
MCW	UDDR	TEAT	CW	FAT	REA	MARB	BMI	BII	CHB
39	1.2	1.3	60	0.082	0.24	0.23	\$415	\$497	\$104

Consigned by **Rocker B Ranch, Cody Webb, Barnhart, TX • 325-450-6395**

37 RBR 9163G MAUI 228K {DLF,HYF,IEF,MSUDF}

Calved 11/1/22 • #44401342 • Tattoo: 228K

IMR L1 177R DOMINO 5025C ET {DLF,HYF,IEF,MSUDF}

IMR L1 5025C DOMINO 9163G {DLF,HYF,IEF,MSUDF}

IMR L1 225Z DOMINETTE 5036C {DLF,HYF,IEF,MSUDF}

H5 9131 DOMINO 2185 {SOD}{DLF,HYF,IEF}

IMR 2185 DOMINETTE 9039G {DLF,HYF,IEF,MSUDF}

IMR 177R DOMINETTE 6053D ET

CED	BW	WW	YW	DMI	SC	SCF	MILK	M&G	CEM
-3.3	4.9	64	109	0.1	1	14.5	36	68	3.3
MCW	UDDR	TEAT	CW	FAT	REA	MARB	BMI	BII	CHB
93	1.1	1.1	83	0.052	0.47	0.09	\$345	\$424	\$136

Consigned by **Rocker B Ranch, Cody Webb, Barnhart, TX • 325-450-6395**

34 RBR 1202Y COWBOY 207K {DLF,HYF,IEF,MSUDF}

Calved 9/21/22 • #44401214 • Tattoo: 207K

GOLDEN OAK OUTCROSS 18U {SOD}{CHB}{DLF,HYF,IEF,MSUDF}

CHURCHILL COWBOY 1202Y ET {DLF,HYF,IEF}

CHURCHILL LADY 202 {DLF,HYF,IEF}

DH ADVANCE 736 {DLF,HYF,IEF}

IMR 736 MISS ADVANCE 7045E ET {DLF,HYF,IEF,MSUDF}

IMR 8542 DOMINETTE 2052Z {DLF,HYF,IEF}

CED	BW	WW	YW	DMI	SC	SCF	MILK	M&G	CEM
5.6	1.7	54	89	-0.1	1.7	14.4	37	64	3.2
MCW	UDDR	TEAT	CW	FAT	REA	MARB	BMI	BII	CHB
83	1.1	1.2	59	0.052	0.54	0.27	\$333	\$412	\$124

Consigned by **Rocker B Ranch, Cody Webb, Barnhart, TX • 325-450-6395**

38 RBR 9163G DOMINO 229K {DLF,HYF,IEF,MSUDF}

Calved 11/1/22 • #44401344 • Tattoo: 229K

IMR L1 177R DOMINO 5025C ET {DLF,HYF,IEF,MSUDF}

IMR L1 5025C DOMINO 9163G {DLF,HYF,IEF,MSUDF}

IMR L1 225Z DOMINETTE 5036C {DLF,HYF,IEF,MSUDF}

DH ADVANCE 736 {DLF,HYF,IEF}

IMR 736 MISS ADVANCE 7055E ET {DLF,HYF,IEF,MSUDF}

IMR 8542 DOMINETTE 2052Z {DLF,HYF,IEF}

CED	BW	WW	YW	DMI	SC	SCF	MILK	M&G	CEM
-6.2	5.2	67	107	0	0.8	14.8	41	74	-3.8
MCW	UDDR	TEAT	CW	FAT	REA	MARB	BMI	BII	CHB
81	1.3	1.4	83	0.002	0.51	-0.03	\$348	\$421	\$128

Consigned by **Rocker B Ranch, Cody Webb, Barnhart, TX • 325-450-6395**

35 RBR 120F GOLDEN REVIVAL 208K {DBP}

Calved 9/21/22 • #44402118 • Tattoo: 208K

NJW 98S R117 RIBEYE 88X ET {SOD}{DLF,HYF,IEF,MSUDF,MDF,DBP}

NJW 165A 88X REVIVAL 120F ET {DLF,HYF,IEF,MDF}

NJW 137X 10Y FAITH 165A {DLF,HYF,IEF,MSUDF,MDF}

DB 1036 ADV 4431 {DLF,HYF,IEF}

RBR GOLDIE 720E {DLF,HYF,IEF,DBP}

MS RW LANSING GOLD 3123 {DLF,HYF,IEF,DBP}

CED	BW	WW	YW	DMI	SC	SCF	MILK	M&G	CEM
9.3	0	47	64	0.2	1.1	18.4	28	51	4.5
MCW	UDDR	TEAT	CW	FAT	REA	MARB	BMI	BII	CHB
68	1.3	1.4	62	0.002	0.4	0.2	\$374	\$444	\$110

Consigned by **Rocker B Ranch, Cody Webb, Barnhart, TX • 325-450-6395**

39 RBR 910G ADVANCE 230K {DLF,HYF,IEF,MSUDF}

Calved 11/1/22 • #44401348 • Tattoo: 230K

CL 1 DOMINO 215Z {SOD}{CHB}{DLF,HYF,IEF,MSUDF,MDF}

RBR 215Z ADVANCE 910G {CHB}{DLF,HYF,IEF,MSUDF}

IMR 9038W MISS ADVANCE 4101B {DLF,HYF,IEF}

HH ADVANCE 2037Z ET {SOD}{DLF,HYF,IEF}

IMR 2037Z MISS ADVANCE 5010C {DLF,HYF,IEF,MSUDF}

IMR 028X EUPHORIA 2006Z

CED	BW	WW	YW	DMI	SC	SCF	MILK	M&G	CEM
5.9	2.6	50	78	0	0.3	17.4	31	56	4
MCW	UDDR	TEAT	CW	FAT	REA	MARB	BMI	BII	CHB
73	1.1	1.2	83	0.072	0.43	0.26	\$388	\$467	\$145

Consigned by **Rocker B Ranch, Cody Webb, Barnhart, TX • 325-450-6395**

40 RBR 9163G ADVANCE 231K {DLF,HYF,IEF,MSUDF}

Calved 11/2/22 • #44401349 • Tattoo: 231K

IMR L1 177R DOMINO 5025C ET {DLF,HYF,IEF,MSUDF}

IMR L1 5025C DOMINO 9163G {DLF,HYF,IEF,MSUDF}

IMR L1 225Z DOMINETTE 5036C {DLF,HYF,IEF,MSUDF}

DB 233 ADVANCER 5136 {DLF,HYF,IEF}

RBR 5136 MS ADVANCE 811F {DLF,HYF,IEF}

IMR 9038W MISS ADVANCE 4101B {DLF,HYF,IEF}

CED	BW	WW	YW	DMI	SC	SCF	MILK	M&G	CEM
-6.9	6.1	68	108	0.1	0.7	12.2	34	68	1.2
MCW	UDDR	TEAT	CW	FAT	REA	MARB	BMI	BII	CHB
98	1.1	1.1	97	0.052	0.5	-0.08	\$316	\$386	\$133

Consigned by **Rocker B Ranch, Cody Webb, Barnhart, TX • 325-450-6395**

44 RSS COUNTRY KID 2305 {DLF,HYF,IEF,MSUDF,MDF,DBC}

Calved 3/9/23 • #44477597 • Tattoo: 2305

KT SMALL TOWN KID 5051 {SOD}{CHB}{DLF,HYF,IEF,MSUDF,MDC,DBF}

CANYON GEM NEW KID IN TOWN 22F {CHB}{DLF,HYF,IEF,MDF}

CG X651 TESTY C211 {DLF,HYF,IEF}

KSU WILDCAT 656 ET {DBP}

RSS SISSY SWEI 1503 {DLP,HYP,DBP}

RSS FRAU CG 901 1131 {DOD}{DLP,HYP,DBP}

CED	BW	WW	YW	DMI	SC	SCF	MILK	M&G	CEM
2.8	3	47	82	-0.2	0.6	15.5	19	42	4.8
MCW	UDDR	TEAT	CW	FAT	REA	MARB	BMI	BII	CHB
92	1.3	1.3	70	0.002	0.61	0.3	\$367	\$441	\$150

Consigned by **Schlegel & Son, Ron Schlegel, Olney, TX • 940-256-8490**

41 RBR 9163G STANWAY 232K

Calved 11/3/22 • #44401423 • Tattoo: 232K

IMR L1 177R DOMINO 5025C ET {DLF,HYF,IEF,MSUDF}

IMR L1 5025C DOMINO 9163G {DLF,HYF,IEF,MSUDF}

IMR L1 225Z DOMINETTE 5036C {DLF,HYF,IEF,MSUDF}

DB 233 ADVANCER 5136 {DLF,HYF,IEF}

RBR 5136 STANWAY 809F {DLF,HYF,IEF}

MS RW STANWAY SELECT 3731 {DLF,HYF,IEF}

CED	BW	WW	YW	DMI	SC	SCF	MILK	M&G	CEM
-8.8	8.7	56	94	-0.1	0.3	14	27	55	-2.4
MCW	UDDR	TEAT	CW	FAT	REA	MARB	BMI	BII	CHB
91	1.2	1.3	64	-0.018	0.19	-0.09	\$309	\$367	\$100

Consigned by **Rocker B Ranch, Cody Webb, Barnhart, TX • 325-450-6395**

45 SPEARHEAD H315 APPROACH MARCH {DLF,HYF,IEF,MSUDF,MDF,DBF}

Calved 10/22/22 • #44431070 • Tattoo: K47

SHF DAYBREAK Y02 D287 ET {CHB}{DLF,HYF,IEF,MSUDF}

SHF HEADSTRONG D287 H315 ET {CHB}{DLF,HYF,IEF,MSUDF,MDF,DBF}

SHF OKSANA 001A D03 ET {DLF,HYF,IEF,MDF,DBF}

SPEARHEAD RIBEYE TROOPER Z32 {DLF,HYF,IEF}

SPEARHEAD LULU BELLE B27 {DOD}{DLF,HYF,IEF,MSUDF,MDF,DBF}

SPEARHEAD 4R LULU Z7 {DLF,HYF,IEF,MSUDF,MDF,DBF}

CED	BW	WW	YW	DMI	SC	SCF	MILK	M&G	CEM
2.5	3	78	131	0.8	1.8	16.3	33	72	1.1
MCW	UDDR	TEAT	CW	FAT	REA	MARB	BMI	BII	CHB
128	1.4	1.4	95	0.042	0.99	0.34	\$399	\$505	\$170

Consigned by

Spearhead Ranch, Paul Funk, Copperas Cove, TX • 254-289-7657

42 RSS ROTE APFUL 2302 {DLF,HYF,IEF,MSUDF,MDF,DBF}

Calved 2/22/23 • #44463710 • Tattoo: 2302

LJS MARK DOMINO 1321 {CHB}{DLF,HYF,IEF,MSUDF,MDF,DBF}

RSS 1321 ROTE APFUL 2017 {DLF,HYF,IEF,MSUDF,MDF,DBP}

RSSLGH ROTE APFUL SCHEIB150213 {DBP}

CL 1 DOMINO 215Z {SOD}{CHB}{DLF,HYF,IEF,MSUDF,MDF}

RSS 215Z FRAU 2005 {DLP,HYP,DBP}

RSS FRAU CG 901 1131 {DOD}{DLP,HYP,DBP}

CED	BW	WW	YW	DMI	SC	SCF	MILK	M&G	CEM
-0.8	4.5	63	97	0.2	1.1	19.8	40	71	7.6
MCW	UDDR	TEAT	CW	FAT	REA	MARB	BMI	BII	CHB
73	1.3	1.4	82	0.032	0.38	0.4	\$432	\$534	\$157

Consigned by **Schlegel & Son, Ron Schlegel, Olney, TX • 940-256-8490**

43 RSS COUNTRY KID 2303 {DLF,HYF,IEF,MSUDF,MDF,DBF}

Calved 2/25/23 • #44477596 • Tattoo: 2303

KT SMALL TOWN KID 5051 {SOD}{CHB}{DLF,HYF,IEF,MSUDF,MDC,DBF}

CANYON GEM NEW KID IN TOWN 22F {CHB}{DLF,HYF,IEF,MDF}

CG X651 TESTY C211 {DLF,HYF,IEF}

CJH HARLAND 408 {SOD}{DLF,HYF,IEF,MSUDF,MDF}

RSSLGH ROTE APFUL SCHEIB150213 {DBP}

RSS FRAU KATZE 1304 {DBP}

CED	BW	WW	YW	DMI	SC	SCF	MILK	M&G	CEM
7.2	4	53	89	0.1	0.8	11.6	15	41	3.9
MCW	UDDR	TEAT	CW	FAT	REA	MARB	BMI	BII	CHB
93	1.2	1.1	67	-0.028	0.62	0.32	\$302	\$380	\$146

Consigned by **Schlegel & Son, Ron Schlegel, Olney, TX • 940-256-8490**



46 SPEARHEAD MISSION L24 {DLF,HYF,IEF,MSUDF,MDF,DBF}

Calved 4/21/23 • #44479859 • Tattoo: L24

SPEARHEAD 22S CORPS COMMANDE14 {CHB}{DLF,HYF,IEF,MDF,DBF}

SPEARHEAD DIVISION COMMAND J11 {DLF,HYF,IEF,MSUDF}

SPEARHEAD X51 FOX F14 {DLF,HYF,IEF}

SPEARHEAD 22S CORPS COMMANDE14 {CHB}{DLF,HYF,IEF,MDF,DBF}

SPEARHEAD E14 KATHERINE H26

SPEARHEAD X51 DEARIE D6 {DLF,HYF,IEF,MSUDF}

CED	BW	WW	YW	DMI	SC	SCF	MILK	M&G	CEM
8.6	0.9	50	73	0.1	0.9	12	19	44	5.9
MCW	UDDR	TEAT	CW	FAT	REA	MARB	BMI	BII	CHB
71	1.3	1.3	72	0.042	0.71	0.33	\$307	\$383	\$140

Consigned by

Spearhead Ranch, Paul Funk, Copperas Cove, TX • 254-289-7657



47 EJE 2G R018 RANCH HAND R307 {HYP,DBP}
 Calved 2/9/23 • #44591489 • Tattoo: R307

BAR S LHF 028 240 {SOD}{CHB}{DLF,HYF,IEF}
 AUBREYS GKB MCGRADY2G {DLF,HYF,IEF,MSUDF,MDF,DBF}
 AUBREY'S SEAFIRE 4E {DLF,HYF,IEF,MSUDF,MDF,DBF}
 GKB 2214 MASON 6025 {DLF,HYF,IEF,MSUDF,DBP}
 EJE 6025 R307 MS RANCHER R018 {HYP,DBP}
 EJE 9318 CONTROL RANCHER R307 {HYP}

CED	BW	WW	YW	DMI	SC	SCF	MILK	M&G	CEM
8.4	2	45	75	0	0.9	13.2	25	48	5.4
MCW	UDDR	TEAT	CW	FAT	REA	MARB	BMI	BII	CHB
86	1.4	1.5	64	0.002	0.41	0.17	\$308	\$371	\$121

Consigned by
 White Rock Hereford Ranch, EC Rosson, Milford, TX • 817-992-3152



49 EJE 2G R022 MIGHTY JOE R306 {DBP}
 Calved 2/10/23 • #44591491 • Tattoo: R306

BAR S LHF 028 240 {SOD}{CHB}{DLF,HYF,IEF}
 AUBREYS GKB MCGRADY2G {DLF,HYF,IEF,MSUDF,MDF,DBF}
 AUBREY'S SEAFIRE 4E {DLF,HYF,IEF,MSUDF,MDF,DBF}
 GKB 2214 MASON 6025 {DLF,HYF,IEF,MSUDF,DBP}
 EJE 6025 R712 IDA JOLENE R022 {DBP}
 EJE R402 B891 MS IDA JO R712 {DBP}

CED	BW	WW	YW	DMI	SC	SCF	MILK	M&G	CEM
7.3	2.4	49	78	0.1	0.9	12.5	29	53	4.4
MCW	UDDR	TEAT	CW	FAT	REA	MARB	BMI	BII	CHB
86	1.4	1.5	66	0.002	0.5	0.17	\$301	\$366	\$122

Consigned by
 White Rock Hereford Ranch, EC Rosson, Milford, TX • 817-992-3152



48 EJE 2G R011 TITIAN R303 {DBP}
 Calved 2/10/23 • #44591490 • Tattoo: R303

BAR S LHF 028 240 {SOD}{CHB}{DLF,HYF,IEF}
 AUBREYS GKB MCGRADY2G {DLF,HYF,IEF,MSUDF,MDF,DBF}
 AUBREY'S SEAFIRE 4E {DLF,HYF,IEF,MSUDF,MDF,DBF}
 GKB 2214 MASON 6025 {DLF,HYF,IEF,MSUDF,DBP}
 EJE 6025 R308 ROSE MARIE R014 {DBP}
 EJE BAR MS 88X0253 ROSE R308ET {DBP}

CED	BW	WW	YW	DMI	SC	SCF	MILK	M&G	CEM
7.3	2.5	49	79	0.1	0.9	13.8	27	52	3.9
MCW	UDDR	TEAT	CW	FAT	REA	MARB	BMI	BII	CHB
86	1.4	1.5	63	0.002	0.45	0.19	\$317	\$385	\$120

Consigned by
 White Rock Hereford Ranch, EC Rosson, Milford, TX • 817-992-3152



50 EJE 2G R623 LADY KILLER R308 {DBP}
 Calved 2/20/23 • #44591492 • Tattoo: R308

BAR S LHF 028 240 {SOD}{CHB}{DLF,HYF,IEF}
 AUBREYS GKB MCGRADY2G {DLF,HYF,IEF,MSUDF,MDF,DBF}
 AUBREY'S SEAFIRE 4E {DLF,HYF,IEF,MSUDF,MDF,DBF}
 EJE 88X BALLARD R402 {DLF,HYF,IEF,MSUDF,DBP}
 EJE R402 R103 MS LADY R623 {DBP}
 EJE COLD FRONT LADY R103 {DBP}

CED	BW	WW	YW	DMI	SC	SCF	MILK	M&G	CEM
8	1.8	47	77	0	1	14.4	29	52	5.1
MCW	UDDR	TEAT	CW	FAT	REA	MARB	BMI	BII	CHB
83	1.4	1.4	62	0.002	0.44	0.2	\$327	\$395	\$122

Consigned by
 White Rock Hereford Ranch, EC Rosson, Milford, TX • 817-992-3152



F | E | M | A | L | E | S

John Harper, Corsicana, TX

903-654-3395

5 Commercial Black Baldys

M5 Red Angus, Riley Malone, Milford, TX

214-329-6044

Registered Red Angus females

Muleshoe Ranch, Dr Tom Echols, Breckenridge, TX

254-559-9421

5 Black Baldy heifers

Texas A&M University, Ryan Doerner, Commerce TX

940-550-8857

5 Hereford heifers

Pfluger Herefords, Walter Pfluger, San Angelo, TX

830-765-0642

Four Hereford heifers are October born so will be yearlings, they are all purebred Herefords that papers were not kept up on. They are open and will be ready for the bull.

Prairie Rose Cattle Co., Fred Nessler, Waxahachie, TX

217-741-5500

5 Registered Hereford females

GGSC MERRY KATE 24J and PRCC CLAIRE 2004ET have both been pasture-exposed to GKB PRCC SANDSTORM 8132. The other three are spring born heifer calves.

O H Triangle Ranch, Ryan Akers, Mertzon, TX

805-709-2289

2 pens of 5 Commercial Black Baldys

Sired by OHT bulls, ready to join your herd in Buffalo, TX on Oct. 30th. Do not miss this opportunity to improve your herd and increase the value of your cattle!

Smith Herefords Fairview Farms

George West, TX

830-255-9788

Hereford heifers

Buffalo Livestock Marketing

Cody deCordova

Buffalo, TX 254-424-1736

30 Brahman females

30 Crossbred females

51 EJE 2G 7086 AUBREYS LAD R301

Calved 2/11/23 • #44591393 • Tattoo: R301

BAR S LHF 028 240 {SOD}{CHB}{DLF,HYF,IEF}

AUBREYS GKB MCGRADY2G {DLF,HYF,IEF,MSUDF,MDF,DBF}

AUBREY'S SEAFIRE 4E {DLF,HYF,IEF,MSUDF,MDF,DBF}

CRR 5280 {DLF,HYF,IEF}

C 5280 1311 LASS 7086 ET {DLF,HYF,IEF,MSUDF}

C 88X NOTICE ME 1311 ET {DLF,HYF,IEF,MDF,DBF}

CED	BW	WW	YW	DMI	SC	SCF	MILK	M&G	CEM
8.4	1.4	45	72	0.1	1.1	20.7	26	48	3.2
MCW	UDDR	TEAT	CW	FAT	REA	MARB	BMI	BII	CHB
61	1.3	1.3	67	0.012	0.42	0.17	\$412	\$480	\$119

Consigned by

White Rock Hereford Ranch, EC Rosson, Milford, TX • 817-992-3152

52 ZOELLERS G71 MAJOR LEAGUE 37K {DBP}

Calved 10/2/22 • #44474761 • Tattoo: 4Z37K

CRR 719 CATAPULT 109 {SOD}{DLF,HYF,IEF,MDF}

BK BH FAST BALL F102 ET {DLF,HYF,IEF,MSUDF,MDF,DBF}

BK COOL BEANS 5707C {DLF,HYF,IEF}

C BAR ONE 7058 ET {DLF,HYF,IEF,MSUDF}

JPDL T/R KASSIM G71 ET {DLF,HYF,IEF,MSUDF,DBP}

EXR KASSIM 7182 ET {DLF,HYF,IEF,MSUDF,DBP}

CED	BW	WW	YW	DMI	SC	SCF	MILK	M&G	CEM
0.2	3.8	60	97	0.5	0.8	12.5	30	60	1.6
MCW	UDDR	TEAT	CW	FAT	REA	MARB	BMI	BII	CHB
80	1.1	1.1	74	-0.028	0.64	-0.02	\$295	\$359	\$111

Consigned by

**Zoeller Family Herefords, Lyle or Cally Zoeller, Gatesville, TX
254-223-4517, 254-223-4518**

53 ZOELLERS 64C ON POINT 50K ET {DBP}

Calved 11/1/22 • #44452498 • Tattoo: 4Z50K

CRR 719 CATAPULT 109 {SOD}{DLF,HYF,IEF,MDF}

CRR 109 ON POINT 559 ET {DLF,HYF,IEF,MSUDF,MDF,DBF}

CRR 435 KELLY 161 {DLF,HYF,IEF,MDF,DBF}

MSU TCF REVOLUTION 4R {SOD}{DLF,HYF,IEF,MDF,DBC}

MCM 74Y STELLAS STAR 4R 64C ET {DLF,HYF,IEF,MSUDF,MDF,DBC}

MCM 41W RITA 74Y {DLF,HYF,IEF,DBP}

CED	BW	WW	YW	DMI	SC	SCF	MILK	M&G	CEM
4	3	55	91	0.2	0.6	13.4	28	56	3
MCW	UDDR	TEAT	CW	FAT	REA	MARB	BMI	BII	CHB
94	1.3	1.3	67	0.002	0.51	0.05	\$308	\$373	\$111

Consigned by **Zoeller Family Herefords, Lyle or Cally Zoeller, Gatesville, TX
254-223-4517, 254-223-4518**

Texas Hereford Association
4609 Airport Freeway
Fort Worth, Texas 76117