

# TEXAS HEREFORD

The Official Publication of the Texas Hereford Association

January 2013



# SELLING

44<sup>th</sup>

**Annual Premium Whiteface  
Replacement Female Show and Sale  
Sunday, February 3, 2013**

**These fall yearling (Nov.-Dec. 2011) heifers  
will sell bred to DB 314 Dom 0343 (*pictured at right*)  
from Dec. 1 to Jan. 15 for a 45 day calving season.**



**These March-April 2012 heifers sired by a CY  
bull out of registered Angus cows will sell open.**

**CURTIS YOUNTS & SON**



# SELLING Embryos



BR CSF Copper ET [DLF,HYF,IEF']  
Sire of Lot #33A • 3 Embryos

**Lot #33A • Expected Average Progeny Value**

BW	WW	YW	Milk	M&G	REA	IMF
+3.8	+62	+89	+22	+53	+0.58	+0.03



H5 9126 Domino 752 [CHB,DLF,HYF,IEF]  
Sire of Lot #33B • 3 Embryos

**Lot #33B • Expected Average Progeny Value**

BW	WW	YW	Milk	M&G	REA	IMF
+2.1	+52	+82	+29	+56	+0.67	+0.01



GKB W4 279 Treasure 7114 ET  
Dam of Lot #33A and #33B

Offering two packages of 3 embryos out of our 7114 cow, who was the high selling female in the 2010 Texas Hereford "Hats Off to Herefords" Sale and produced the high selling heifer in the 2011 "Hats Off to Herefords" Sale. One mating is to BR CSF Copper ET, a flushmate brother to BR Currency, a Denver National Western Grand Champion, and out of BR Gabrielle 5082, a 2-time Denver Grand Champion plus Supreme Champion. The other mating is to H5 9126 Domino 752, herd sire for C&M Herefords and Fuston Herefords.

**Proceeds from Lot #33B will benefit the THA Foundation**

**AHA Golden Hereford Breeder**

Herefords Since 1959

**CURTIS YOUNTS & SON**

Cell: 254/760-0243 • Res: 254/939-6492  
3648 Elmer King Rd. • Belton, TX 76513

# TEXAS HEREFORD

Official publication of the Texas Hereford Association

January 2013 • Vol. 62, No. 3

## Mission Statement

The Texas Hereford Association will provide the leadership to unite, foster and protect the interest of the Hereford breed; and promote fairly the production and consumption of Hereford beef universally.

## Features

32 Western Nugget National Hereford Show  
*Show Results*

33 Honorary Members  
*Harry Born and Denny Fuston*

34 Honorary Member  
*John and Ann Gunter*

34 Friend of THA  
*deCordova Family*

35 Booster of the Year  
*GKB Cattle, Gary and Kathy Buchholz*

35 National Hereford Show Honoree  
*Jackson Hereford Ranch*

## Departments

4 Bulletin Board

8 Tailgate Talk

43 Calendar of Events

44 Advertisers Index

## On The Cover

Kristian Rennert, rancher and District Sales Manger for Loomix ADM Alliance from Elm Creek, Neb., sent this photo to show how Hereford and Hereford cross cattle can thrive in adverse weather; one of the Hereford breeds strongest traits. This was one of his Hereford x Angus cross calves.

THE TEXAS HEREFORD (ISSN 0744-4761) (USPS 616-680) is published monthly except for the month of July by the Texas Hereford Association. POSTMASTER: Please send change of address notices to The Texas Hereford, 4609 Airport Frwy., Ft. Worth, TX 76117. Periodical postage paid at Ft. Worth, TX, and additional mailing offices. Subscription rate: One Year, \$15.00. Advertising rates on request. Contributions to the editorial pages are welcome, but the magazine cannot be responsible for the return of unsolicited material.

## Texas Hereford Association Officers

Jay Wright, Morgan, president  
Gary Buchholz, Waxahachie, president-elect  
Terri Barber, Austin, vice-president  
Chad Breeding, Miami, vice-president  
Dr. John Mehaffey, Burleson, vice-president  
Jack Chastain, Fort Worth, secretary-treasurer  
Scott Nolan, Gilmer, past-president

## Executive Committee

John Dudley, Comanche  
Bill McInnis, May  
Berry Summerour, Houston  
John Winsauer, Beeville  
Curtis Younts, Jr., Belton

## Directors

Randy Barnes, Granbury  
Pete Case, Eldorado  
Sue Darnell, El Paso  
Mark Ebeling, Cleburne  
Dusty Greaves, Coleman  
Kevin Hartley, Madisonville  
Larry Johnson, Abilene  
Steve Lesley, Stephenville  
Bill McInnis, May  
Donlie McMullin, Copperas Cove  
Jim Nelson, Plano  
Steve Noack, Rockdale  
Kyle Perez, Nara Visa, NM  
Brie Whitehead Perks, Fort Worth  
James Schmidt, Mason  
Keith Schmidt, Gonzales  
Ron Smith, Fredericksburg  
Neal Spencer, North Richland Hills  
Tom Walker, LaGrange  
John Winsauer, Beeville  
Wayne Baize, Ft. Davis  
Dr. M.C. Baker, Granbury  
Dennis Braden, Stamford  
Swasey Brainard, Pampa  
Austin Brown, III, Beeville  
James Dangelmayr, Muenster  
Harry Dudley, Comanche  
John Dudley, Comanche  
James Floyd, Wink  
Bradley Hale, Miami  
Ira Lee, Willow City  
Joshua Martin, Floresville  
Brady Mimms, Lorenzo  
Jane Murphey, Meridian  
Dan Nance, Haslet  
David Neal, Ft. McKavett  
Jackie Pullen, Rockwall  
Monroe Schatte Jr., Giddings  
J.D. Schmidt, Hondo  
Curtis Younts, Jr., Belton  
Jimmy Atlas, Grandview  
Dr. Stephen Coates, San Angelo  
Matt Copeland, Nara Visa, NM  
Tom Dudley, Comanche  
Mark Ellison, College Station  
Mike Fuston, Turkey  
Jerry Lewis, Valley View  
Dimitri Mataragas, Athens  
David Moore, Hamlin  
David Morris II, Marquez  
J.D. Ragland, Canyon  
E.C. Rosson, Milford  
Ron Schlegel, Olney  
Dr. Mark Steele, Graham  
Reed Stewart, Sterling City  
Brad Stuart, Roby  
Berry Summerour, Houston  
Lee Terrell, Sherman  
Susan Turner, Rochester  
Lynn Weinheimer, Stonewall

## TEXAS HEREFORD

4609 Airport Freeway • Fort Worth, TX 76117  
www.texasheford.org  
817/831-3161 • Fax: 817/831-3162  
texasheford@sbcglobal.net  
Jack Chastain, *Manager/Editor*  
Penni Hiles, *Assistant Editor & Circulation*  
Park Place Enterprises, *Design*  
Lee Chastain, *Photo Production*

## AFFILIATED WITH

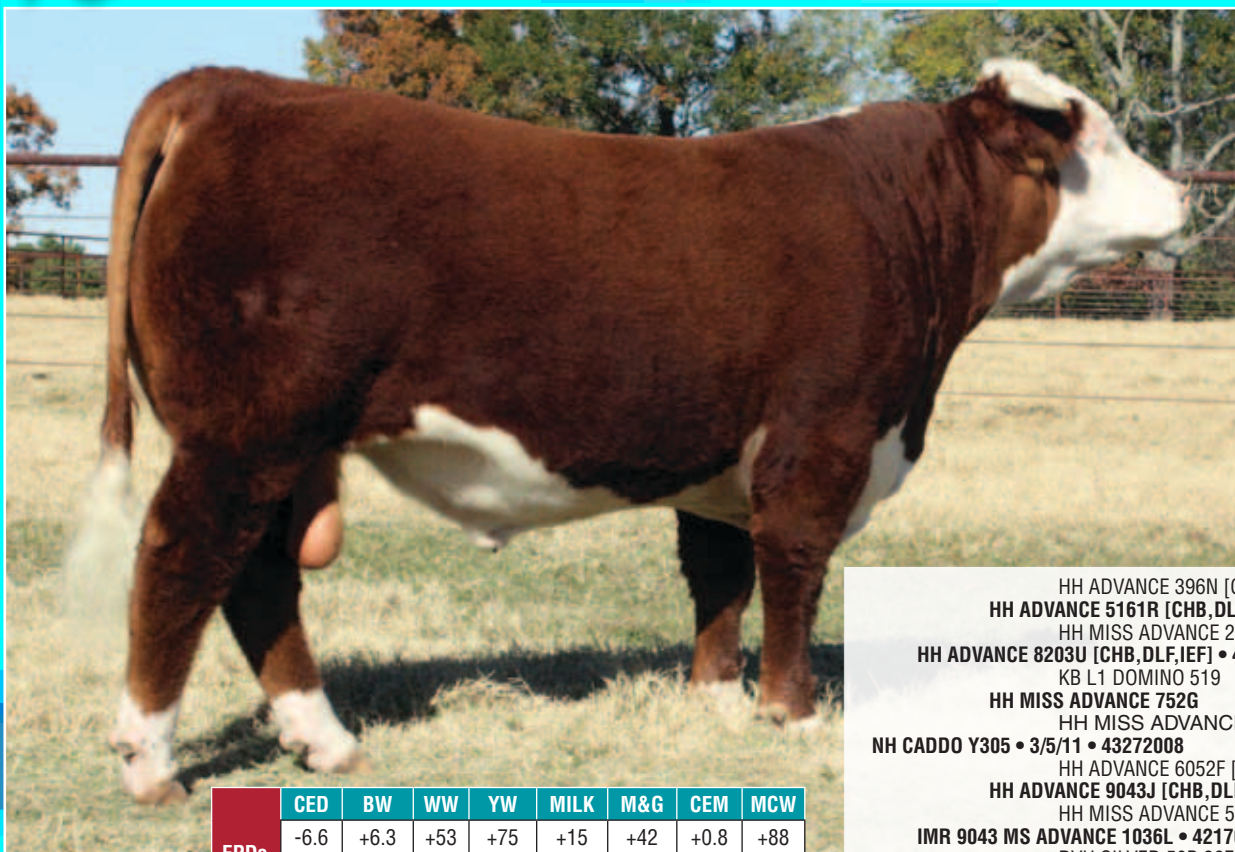
LPC – Livestock Publications Council  
National Cattlemen's Beef Association  
American Hereford Association  
Texas & Southwestern Cattle Raisers Association  
Texas Purebred Cattle Alliance



# He sells!



# Lot #15



EPDs	CED	BW	WW	YW	MILK	M&G	CEM	MCW
	-6.6	+6.3	+53	+75	+15	+42	+0.8	+88
	SC	FAT	REA	MARB	BMI	CEZ	BII	CHB
	+0.9	+0.001	+0.03	+0.19	+\$18	+\$9	+\$18	+\$23

HH ADVANCE 396N [CHB,DLF,IEF]  
 HH ADVANCE 5161R [CHB,DLF,IEF]  
 HH MISS ADVANCE 2118M [DLF,IEF]  
 HH ADVANCE 8203U [CHB,DLF,IEF] • 42897201  
 KB L1 DOMINO 519  
 HH MISS ADVANCE 752G  
 HH MISS ADVANCE 454D  
 NH CADDY Y305 • 3/5/11 • 43272008  
 HH ADVANCE 6052F [SOD,DLF,IEC]  
 HH ADVANCE 9043J [CHB,DLF,IEC]  
 HH MISS ADVANCE 594E  
 IMR 9043 MS ADVANCE 1036L • 42170503  
 RVH SILVER 50B 26E  
 IMR SILVER MISS 8011  
 IMR MSPAT 2003 1ET



BUILDING OUR PROGRAM  
 AROUND  
**CHAMPIONS ...**  
 BOTH KIDS & CATTLE

## NOLAN HEREFORDS

Scott, Alise, Ilissa, Bethany & Audrey  
 1950 Skylark Rd • Gilmer, TX 75645 • nolanherefords@aol.com  
 Res. 903-797-6131 • Cell: 903-738-5636  
 Steve Decker, Herdsman • 254-582-4310  
 www.nolanherefords.com

## West Texas Scholarship Info

Information, criteria and scholarship application regarding the West Texas Hereford Association Curly Hays Memorial Scholarship can be obtained on-line at [www.cfabilene.org](http://www.cfabilene.org) under scholarships and then finding West Texas Hereford Association Curly Hays Memorial Scholarship. The deadline for the scholarship is April 1, 2013. If applicants have questions or are unable to obtain on-line call Twalla Simmons at 325-893-5993 or 325-669-1692 and the information will be mailed. ★

## Attention Juniors: \$5,000 for Top Jr. in Fort Worth National Show

Funds have been committed to award \$5,000 to the top placing junior heifer and \$2,500 to second place junior heifer (if funds permit) that is exhibited at the National Hereford Show in Fort Worth. A second scholarship will be awarded if \$5,000 is exceeded. Exhibitor must be at the halter of his/her own heifer as well as be eligible to show in the junior show the previous week. The heifer must be eligible to show for Grand Champion (no Cow/Calf). This is an incentive to encourage junior exhibitors to exhibit at the open show on February 4, 2013. To be eligible for the award, the exhibitor must enter the open show by the November 15th deadline. The exhibitor must be a member of the Texas Junior Hereford Association.

The sponsors of this award are committed to making this an annual event and hope to grow the fund to increase the prize as well as create a special belt buckle for the event. Anyone wishing to join this effort should contact Jack Chastain at the THA office. ★

### NOTICE

this month's listings will only appear on the website: [www.texashereford.org](http://www.texashereford.org)

*Herefords*  
**FOR SALE**

## Nominating Committee Selected

THA President Jay Wright has appointed the nominating committee to recommend officers and directors for 2013. All past THA presidents will serve with John Dudley as chairman and committee members Steven Coates and Lee Haygood. ★

## Sand Hills Hereford Scholarship

Any TJHA member who is a graduating senior and has exhibited at the Sand Hills Hereford Show is eligible to apply for one of the two \$1,000 scholarships awarded to heifer and steer exhibitors. For more information contact Chelli Evans at the Sand Hills Hereford and Quarter Horse show office at 432/366-3951. ★

## Judges Selected for 2013 Southwestern Exposition & Livestock Show

### Junior Heifers

Watt Arena, West Ring:

Ryan Cotton, Ponce Inlet, FL

### Polled Hereford:

Saturday, Jan. 26, at 1:00 p.m.

### Hereford:

Saturday, Jan. 26, following Polled Hereford

### Pen of 10 Commercial Hereford Heifers

Pen Area/Richardson Bass Bldg.

Mr. David Neal, San Angelo, TX

Mr. Wylie Taliaferro, Rosser, TX

Mr. Josh Kinslow, Hearne, TX

Saturday, Feb. 2, at 9:00 a.m.

### National Hereford and Polled Hereford Shows

Watt Arena

Randy and Jamie Mullinix, Toulon, IL

Monday, Feb. 4 at 8:00 a.m.

(classes to be judged concurrently in an alternating format)

### Junior Hereford and Polled

### Hereford Steers

Watt Arena

Dr. Mark Johnson, Stillwater, OK

Thursday, Feb. 7 at 8:00 a.m. following Angus

## Bill King Awarded to Texas Hereford Association

The Texas Hereford Association has been named by the Fort Worth Farm & Ranch Club as the 2013 recipient of the W.A. "Bill" King Award for Excellence in Agriculture. The award will be presented during the Stock Show's Livestock Appreciation Day Luncheon, January 24 at noon in the Round Up Inn.

The Texas Hereford Association is being honored for its history and service to the cattle industry since its inception in 1899. The association was begun in a San Antonio, Texas, boot shop on November 7, 1899 by four men: Captain William S. Ikard of Henrietta, the first breeder of Hereford cattle in the state of Texas and first president of the Texas Hereford Association; Col. B.C. Rhome of Rhome; Rhome Jr., also of Rhome; and J. F. Yearwood of Georgetown.

The mission of the Texas Hereford Association is to provide the leadership to unite, foster and protect the interests of the Hereford breed and to promote fairly the production and consumption of Hereford beef universally.

One person who has tirelessly promoted the breed is Jack Chastain, manager-editor of the "Texas Hereford", who just marked his 40th year with the association.

The W.A. "Bill" King Award recognizes a business, individual or family which has significantly contributed to agriculture or agribusiness industry. The late Bill King founded the Fort Worth Farm & Ranch Club in 1950 and was involved with the Stock Show for 42 years, serving as the livestock show manager from 1947-1977.

The keynote speaker for this year's luncheon is The Honorable Kent R. Hance, the Chancellor of the Texas Tech University System and former member of the U.S. House of Representatives from West Texas. ★



# Messner Ranch

Oklahoma's Oldest Annual Production Sale

**Saturday, February 2, 2013 • 12 Noon**

at the ranch, Slapout, OK

**Selling 150 Service-Age Hereford & Angus Bulls**

**20 Hereford Pairs & Bred Females**



**Lot 21**

**M K77 PRIME STAR 2203Y • 17208437 • 02/18/12**

GARDENS PRIME STAR  
GARDENS PRIME STAR K77  
GREEN GARDEN PRIDE C75 S1

**M K77 PRIME STAR 2203Y**

B/R TRAVELER 004-420  
M LADY MAID 9201W  
M LADY MAID 3206N

EPDs	BW	WW	YW	M	SC	FAT	REA	MARB
	2.4	55	102	20	NA	+0.39	+.39	+.79

BW 75 • Top 15% WW & YW • Top 5% Marbling  
Top 15% \$B of non-parent bulls

HEREFORD HERD BULLS	BW	WW	YW	SC	M	REA	MARB	CHB
CL 1 DOMINO 869U	1.7	50	82	1.1	22	.43	.07	\$25
HH ADVANCE 6098S ET	1.1	50	76	0.5	34	.53	.01	\$20
L1 DOMINO 06576	2.0	50	83	1.3	13	.23	.19	\$23
JA L1 DOMINO 8551U	1.8	57	92	1.1	29	.03	.01	\$26
CL 1 DOMINO 091X	1.8	57	92	1.1	29	0.3	.01	\$26

ANGUS HERD BULLS	BW	WW	YW	SC	M	REA	MARB
CONNEALY 44 062	3.8	75	132	1.78	21	.26	.01
GARDENS PRIME STAR K77	3.6	64	115	1.64	19	.46	1.01
SITZ UPWARD 472T	.3	58	106	.63	37	.60	.55
B/R TRAVELER 004-420	1.8	55	106	1.5	17	.24	.45



**Lot 11**

**M DOMINO 2100Z • 43283807 • 02/14/12**

CL 1 DOMINO 417P [CHB,DLF,IEF]  
CL 1 DOMINO 869U [CHB,DLF,IEF]  
CL 1 DOMINETTE 6128S 1ET [DOD,DLF,IEF]

**M DOMINO 2100Z**

DS BEEF 9059 [CHB,SOD]  
M9059 BEA 6370S  
M9108 KAY 320N

EPDs	BW	WW	YW	M	SC	FAT	REA	MARB
	1.1	47	78	19	+0.9	-0.17	+.43	+.06

BW 78 • 2100 has muscle, thickness and depth of rib.  
738# Index 107 • Ribeye Top 17% of the breed.

**Free Delivery on \$5000 within 300 miles**



Call for more information,  
or to request a sale catalog

To View Catalog, go to  
DVAuction.com

Please contact  
us for more information.  
Milton • 580-273-9494  
Van • 580-837-5532 (res)  
Van's cell: 580-552-1555  
messner1@ptsi.net

RR 1, Box 360 • Slapout, Oklahoma 73848





# SOUTH TEXAS HEREFORD ASSOCIATION SPRING SALE

*Offering Hereford Bulls, Females, True F<sub>1</sub> Females, Registered Brahman Bulls & Brahman Females*

**MARK YOUR CALENDARS!**

*Saturday, February 2, 2013, at noon*

**BEEVILLE LIVESTOCK COMMISSION, INC.**

**2218 US HWY 59E, BEEVILLE, TEXAS**

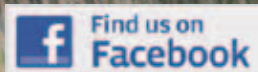
**FOR SALE OR CONSIGNMENT INFORMATION CONTACT:**

**Robbie Morish, SECRETARY,**

**(361) 920-0012 or [info@southtexashereford.org](mailto:info@southtexashereford.org)**

**[www.southtexashereford.org](http://www.southtexashereford.org)**

**AUCTIONEER: LEO CASAS, III**



**BROUGHT TO YOU BY:**



## *Bulls and Heifers for Sale Now*

**and in The Black Hereford Sale March 9, 2013**

*Several bull and heifer calves available for sale now.*

*Selections for The Black Hereford Sale have been made. Several are homozygous black.*



**Lot 45  
056**

**They sell  
March 9, 2013 in  
The Black Hereford Sale!**

**◦96 Head Sell◦**



*For  
more information,  
contact:*



**Lot 10  
058**

**Bobby & Jared Lide  
714 FM 1366  
Mexia, TX 76667**



**254-739-5311  
Bobby (Cell) 254-625-3800  
Jared (Cell) 254-625-3806**

**— VIDEOS of 2013 sale cattle on our website! Go to [www.TripleLBlackHerefords.com](http://www.TripleLBlackHerefords.com) —**



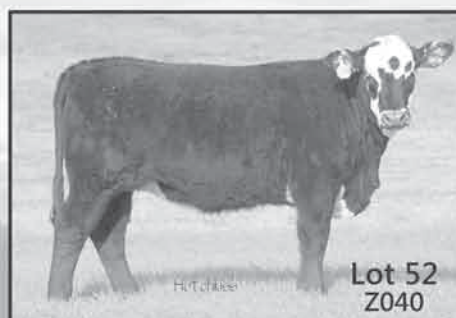
# The Black Hereford Sale

**SAT., MARCH 9, 2013** 12:00 NOON  
**DIAMOND W ARENA, ALVARADO, TX**

*Combining the best traits of Hereford and Angus*

**SELLING 96 LOTS**  
**35 BULLS & 61 FEMALES**

*From these consignors:* D Bar T Ranch, J-B Cattle Co., Escondido Ranches, Rose Ridge Farms, Triple L Ranch, Bobby Watson and YJA Ranch.



*For more information or sale catalog contact:*  
Sale Manager, Bobby Lide  
(Cell) 254-625-3800 or 254-739-5311

**VIDEOS  
OF SALE CATTLE**

This sale will be broadcast live on the internet.  
**DVAuction**  
Broadcasting Real-Time Auctions  
Real time bidding & proxy bidding available.

at [www.TheLivestockLink.com](http://www.TheLivestockLink.com)



As we close out another year, the Optimist in me is thankful 2012 is over and most hopeful that 2013 will bring more positive conditions for the livestock industry. We can be thankful for the positive things that happened and plan to change the not so positive ones. Our Hereford cattle continue to gain acceptability as more and more cattlemen realize what our breed has to offer. The Hereford cow is our rock of strength. We must build from this. Our

bulls continue to make an impact with the number of calves they can sire. As we use sires with more muscle, REA and IMF epd's, we will continue to increase market share of the bull trade. We must get more aggressive and effective in promoting our breed and our product. We must do a better job of developing and selling our cattle.

This issue is full of activities and opportunities for Hereford breeders and enthusiasts. Your staff and executive


committee have planned a few new activities for the upcoming year. We will be back at the Fort Worth Botanic Garden for our annual meeting. Our forty-fourth annual replacement female sale and Cowtown Select sale have excellent offerings. We need your presence and participation for these events to be successful. We have cancelled the spring sale at Morgan but have planned another "Concert in the Barn" in its place to be held in Salado on April 27 at Tenroc Ranch. We have exciting plans to expand our October sale in Buffalo. Our executive committee solicits your input on activities that would make you more proud to be a member of this organization. If you want to contribute time and ideas, contact myself, President Jay Wright, any member of the executive committee or this year's nominating committee. Your help, ideas and contributions are most appreciated. We have a small group of members carrying membership. We need more participation from more members. Specifically we need your attendance at Hereford events. Success is generally measured by size of the crowd. Next we need more participation in advertising in our publication. More ads allow us more editorial and both will enhance Herefords and THA. We are making some changes this month that will allow us to run color ads every month. We are hoping to have a social media presence before the annual meeting.

I extend a plea to all members who do not have a card ad in the magazine. We need your help in keeping enough ads to pay production costs which continue to creep upward. Every director should have a card ad. We also need more members to balance our operating budget. If each current member adds a customer, friend or neighbor as a member, our membership will double. We have experienced a shortfall of revenue over expenses the past few years and are reaching a point of concern. Any help will be most appreciated.


As 2013 progresses, I hope to see more of our members at Hereford events. I hope you encourage a friend or neighbor to come along and become active in our association. January is a busy month, but there is something to do every month. Watch our magazine and our web site for more exciting events in the planning stages for this year. Together we can make Herefords reign Supreme. ★

McMullin Ranch

When bulls like this **HEREFORD**  
are crossed on black cows...



...the results are great  
heifers like these!



SEE US FOR YOUR **HEREFORD BULLS!**

MC

McMullin Ranch

Donlie and Linda McMullin

1005 Perryman Creek Rd.

Copperas Cove, TX 76522

254-547-0172 • dboydmc@yahoo.com



# MW Hereford Ranch

*The Hassle-Free Source  
for Hereford Cattle*



- ☒ **Spring Sale.** We feed the bulls during the winter, freeing your pasture, time, and money.

**28th ANNUAL  
PRODUCTION SALE**  
**Saturday, April 6, 2013**

**12:30 p.m.** at the ranch  
17 miles south of  
Brownwood on FM 45

**SELLING:**

**50** Two-Year-Old Bulls  
**20** Open Hereford Heifers



- ☒ **Central Location.** With the *geographical center of Texas* only 13 miles away, we're close to everyone.

- ☒ **Guarantee.** We absolutely guarantee our cattle. If you are not completely satisfied, we will make it right!

- ☒ **Strategic Planning.** We aren't afraid to spend big bucks when we spot an industry changer. Our bold move several years ago to purchase IMR Patriot 3113 3ET has allowed us to move our cowherd to the forefront of the industry. His daughters are truly impressive with beautiful udders, feminine profiles, and the ability to wean heavy calves under severe drought conditions. 3113's EPD numbers continue to climb when other bulls' numbers often decline as daughters enter production. We've shared a few of his females in previous sales and they are always crowd favorites.

**The Locklear's MW Hereford Ranch**

P. O. Box 1754 • Brownwood, Texas 76804  
325-646-0956 (res.) or 325-646-5501 (ofc.)  
Mopsy, Ward, Travis, Jami, Benjamin and Daxton,  
Chad, Elizabeth, Steve, Connor, Paige, Ashia & Brenna

# We cover the entire state.

*Representing buyers and sellers of farms, cattle & horse ranches.*

We are one of the top marketers of farm and ranch land, with over 20 years of experience. Our well regarded reputation in the market and our extensive contacts benefit you in many ways.

Our vast experience in selling working cattle and horse ranches as well as hunting and recreational properties and producing farms has made us a market leader.

Our agents know and offer you access to the best appraisers, farm and ranch lenders and surveyors.

We create attractive, detailed brochures which are distributed to brokers and prospective buyers.

We continually formulate innovative methods and techniques to maximize exposure of our property. Since 1983 we have invested over \$1,250,000 in media placement.

Everyone in our organization takes pride in our professional service. We provide you with prompt responses to your questions and guard your confidentiality.

**When you decide to sell, call us. You'll be glad you did!**



**"Country Living" acreage with homes, stables or other improvements.**

*Unmatched Performance Since 1983*

**DONLIE McMULLIN REALTY**

Phone: 254-547-0172 • Fax 254-542-1489  
Toll Free: 1-800-200-8966

202 S. 1st Street • P.O. Box 794

Copperas Cove, TX 76522

e-mail: [donliemcmullin@earthlink.net](mailto:donliemcmullin@earthlink.net)

## NorthEast Texas Hereford Association

POLLED and HORNED

# 61<sup>st</sup> annual Sale

**Mt. Pleasant, Texas**

**March 9, 2013 • 12 Noon**

**Titus Co. Fairgrounds**

*Behind Civic Center, on Business 271, 1/4 mile south of I-30, exit 162A*

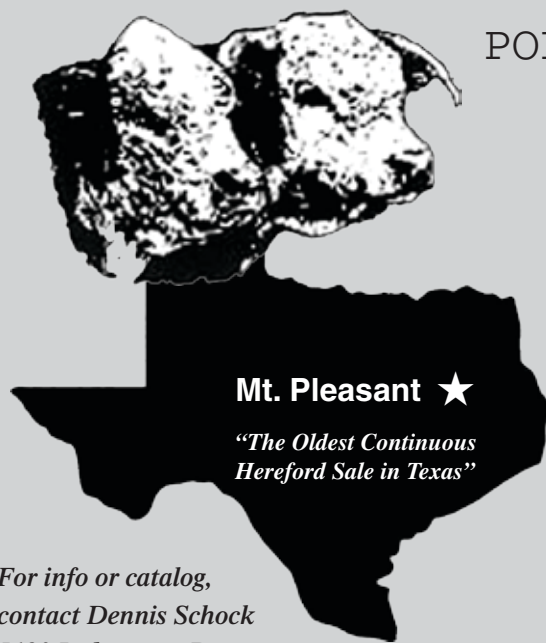
**Auctioneer: Joel Birdwell**

## ***Selling 60 Lots***

**Bulls • Cow/Calf Pairs • Bred Cows • Bred Heifers  
Open Heifers • Show Heifers**

**Lunch provided beginning at 11 a.m.**

*Cattle available for viewing the night before the sale  
& the morning of the sale*



**Mt. Pleasant ★**

*"The Oldest Continuous  
Hereford Sale in Texas"*

*For info or catalog,  
contact Dennis Schock  
5120 Ledgestone Dr.  
Fort Worth, Texas 76132  
903-815-2004  
[dschock254@gmail.com](mailto:dschock254@gmail.com)*



***SELLING  
in the  
44<sup>th</sup> Annual  
Whiteface  
Replacement Female Sale  
February 3, 2013***

**1 Pen  
Open Hereford heifers  
Calved Spring 2012**

---

---

**BAR J BAR RANCH**

Jim & Sue Darnell ... 5 Paseo de Paz

El Paso, Texas 79901

cell ... 915-549-2534 • res ... 915-479-5290

***Line One Cattle ...  
at their best!***

**Selling in the Whiteface  
Replacement Sale**

**1 Pen**

**Open Hereford Heifers**

*calved Dec. 2011 thru Feb. 2012*

*registration papers available*

***Visitors Welcome!***

***EDGAR RANCH***

Bobby and Agatha • P.O. Box 68 • Blanket, TX 76432

(254) 842-6047 home • cell: (325) 642-2651

e-mail: abedgar@cctc.net

**Selling Sunday  
FEBRUARY 3**

**in the  
THA Replacement  
FEMALE SALE**

**1 Pen**

**1 Pen Hereford Heifers, Open  
calved Feb.-May 2012**

**BRAINARD CATTLE CO LLC  
806-898-1026**

**P. O. Box 661 • Pampa, TX 79066**

**44th Annual THA Replacement Female Sale  
Sunday, February 3, 2013**

**ONE PEN OPEN  
HEREFORD  
HEIFERS**

**1 PEN**

**FALL 2011 BORN  
OPEN HEREFORD HEIFERS**

*Since 1893*

**D**

**DANGELMAYR BROS. RANCH**

940/759-4236

James 940-759-4711 • John 940-759-4599

Jack 940-759-2844 / cell: 940-736-4664 • Richard 940-759-4983

5164 County Rd. 426 • Muenster, TX 76252

e-mail: jdranch@cooke.net

# 2013

## THA 44th ANNUAL REPLACEMENT HEIFER SHOW & SALE

SHOW 9:00 AM - Saturday, February 2 • SALE 1:00 PM - Sunday, February 3, 2013

**Judges:** Josh Kinslow, Hearne  
David Neal, San Angelo  
Wylie Taliaferro, Rosser

Texas Hereford Association • Jack Chastain • 817-831-3161 • cell: 817-821-3544

### HEREFORD PENS

CLASS 1 HEREFORD HEIFERS CALVED AFTER SEPTEMBER 1, 2011							
PLACE	PEN NO	EXHIBITOR	AGE OF HEIFERS	BREEDING STATUS/HEALTH INFORMATION	NO. HEAD	PRICE	BUYER
	109W	THA Heritage Pen	Fall 2011 - Spring 2012	Open			
	105E	Bar J Bar Ranch, El Paso	Spring 2012	Open			
	107W	Brainard Cattle Co., Pampa	Feb.-May 2012	Open			
	107E	Dangelmayr Bros., Muenster	Fall 2011	Open			
	105W	Edgar Ranch, Blanket	Dec. 2011 to Mar. 2012	Open			
	109E	Fuston Herefords, Turkey	Dec. 2011 to Jan. 2012	Open			
	113W	Rockin W Polled Herefords, Schulenburg	Oct. 2011 to Mar. 2012	Open			
	103W	Curtis Younts & Son, Belton	Nov.-Dec. 2011	Pasture exposed to Hereford bull DB 314 DOM 0343 12-1-12 to 1-15-13			

CLASS 2 HEREFORD HEIFERS CALVED JANUARY 1 - AUGUST 31, 2011							
PLACE	PEN NO	EXHIBITOR	AGE OF HEIFERS	BREEDING STATUS/HEALTH INFORMATION	NO. HEAD	PRICE	BUYER
	104W	Justin Dauer, Panhandle	Spring 2011	Bred to LBW Angus bulls to calve after Feb. 15, 2013			
	104E	Justin Dauer, Panhandle	Spring 2011	Bred to LBW Angus bulls to calve after Feb. 15, 2013			
	112W	Newly Hutchinson, Canton, OK	Spring 2011	Bred to Red Angus for spring calves			
	115E	Jackson Hereford Ranch, Ranger	Spring 2011	Bred to LBW Hereford and LBW Angus bulls to calve after 3-15-13			
	106E	MW Herefords, Brownwood	Spring 2011	Bred to LBW Angus bulls			
	108W	Milligan Herefords, Kings, IL	March-May 2011	Bred to Hereford bull to calve after Feb. 15			
	108E	Milligan Herefords, Kings, IL	March-May 2011	Bred to Hereford bull to calve after Feb. 15			
	106W	Milligan Herefords, Kings, IL	Aug.-Sept. 2011	Bred to Hereford bull to calve after Sept. 1			
	112E	Summerour Ranch, Dalhart	Spring 2011	Bred to Hereford bull to calve after Feb. 1			
	110W	Summerour Ranch, Dalhart	Spring 2011	Bred to Hereford bull to calve after Feb. 1			
	113E	W4 Ranch, Morgan	Spring 2011	Bred to Brangus bulls to calve after Feb. 15			

CLASS 4 HEREFORD HEIFERS CALVED AFTER JANUARY 1, 2010 ANY OR ALL OF WHICH MAY HAVE CALF AT SIDE							
PLACE	PEN NO	EXHIBITOR	AGE OF HEIFERS	BREEDING STATUS/HEALTH INFORMATION	NO. HEAD	PRICE	BUYER
	111E	W4 Ranch, Morgan	Fall 2012	Open - all have Brangus sired calves at side			

CLASS 7 OPEN BLACK WHITEFACED HEREFORD/ENGLISH CROSS HEIFERS CALVED AFTER SEPT. 1, 2011							
PLACE	PEN NO	EXHIBITOR	AGE OF HEIFERS	BREEDING STATUS/HEALTH INFORMATION	NO. HEAD	PRICE	BUYER
	100W	Brandon Farms, Newkirk, OK	Feb.-Mar. 2012	Open			
	100E	Brandon Farms, Newkirk, OK	Feb.-Mar. 2012	Open			
	101W	Ronnie & Jeanne Johnson, Happy	Spring 2012	Open			
	103E	Curtis Younts & Son, Belton	Mar.-Apr. 2012	Open			

CLASS 8 BRED BLACK WHITE-FACED HEREFORD/ENGLISH CROSS HEIFERS CALVED JAN. 1 TO AUG. 31, 2011							
PLACE	PEN NO	EXHIBITOR	AGE OF HEIFERS	BREEDING STATUS/HEALTH INFORMATION	NO. HEAD	PRICE	BUYER
	102W	Justin Dauer, Panhandle	Spring 2011	Bred to LBW Angus bulls to calve after Feb. 15, 2013			
	102E	Justin Dauer, Panhandle	Spring 2011	Bred to LBW Angus bulls to calve after Feb. 15, 2013			
	115W	Jackson Hereford Ranch, Ranger	Spring 2011	Bred to LBW Hereford & LBW Angus bulls to calve after 3-15-13			

CLASS 10 BLACK WHITE-FACED HEREFORD/ENGLISH CROSS HEIFERS ANY OR ALL WITH CALF AT SIDE							
PLACE	PEN NO	EXHIBITOR	AGE OF HEIFERS	BREEDING STATUS/HEALTH INFORMATION	NO. HEAD	PRICE	BUYER
	114	H Ranch, Channing	Feb. 2011	Bred Apr. 1 to June 1 to 1/2 Angus x 1/2 Jersey bulls All should calve by sale			

#### CHAMPION PEN HEREFORD HEIFERS

--

#### RESERVE CHAMPION PEN HEREFORD HEIFERS

--

#### CHAMPION PEN BLACK WHITEFACE ENGLISH CROSS HEIFERS

--

#### RESERVE CHAMPION BLACK WHITEFACE ENGLISH CROSS HEIFERS

--



# Thank You to our Special Sales Sponsors

WEAVER LEATHER LIVESTOCK

EZY-LIFT

GORMAN MILLING CO., INC.

HIGH COUNTRY PLASTICS

MIDCONTINENT LIVESTOCK SUPPLEMENTS

SILVEUS INSURANCE GROUP

STONE MANUFACTURING

Y-TEX CORPORATION

## Unique Opportunities

### Heritage Pen

Ten very loyal commercial ranches continue to donate a branded weaned heifer calf for a pen to sell at the 44th annual whiteface replacement female sale. These ten ranches represent over 1,100 years of Hereford heritage, as well as nearly 2 million acres of ranch land and nearly 100,000 Hereford cows. Proceeds benefit the general operating account of Texas Hereford Association.

#### Donors include:

Bud Brainard Estate, Canadian • Ed Brainard Estate, Canadian  
Bridwell Ranches, Wichita Falls • Gray Wynn Klein Ranch, Henrietta  
Kokernot 06 Ranch, Fort Davis • McKnight Ranch Co., Fort Davis  
Scaling & Co., Henrietta • Scharbauer Ranch LLC, Midland & Amarillo  
Swenson Land & Cattle, Stamford • W.T. Waggoner Ranches, Vernon

### Special Opportunity

Here is a special opportunity to purchase an Ezy-Lift 2000 (pick-up truck, flat bed or trailer model). The Ezy-Lift 2000 will lift 2,000 pounds from 7 ft. out and place load on the bed of truck or trailer.

Donated by John Winsauer and Ezy-Lift. MSRP \$6,150.00

### Silent Auction

Plans are being made to have an expanded silent auction at our social hour with bigger and better items. Early commitments include a Stone calf puller, rotary tattoo kit, Stihl chain saw; Wayne Baize framed print, Hereford hide, Y TEX ear tags, livestock medications, feed and mineral. All officers and directors are encouraged to contribute to this fund raising event. Please contact Jack Chastain by Wednesday prior to the February 2 meeting of any items you plan to submit.

#### KTP C&M Legacy 2002

6 straws – 2 certificates

**EPD's:** CED +1.5 / BW +3.7 / WW +51 / YW +80 / Milk +25 / M&G +50  
CEM +2.3 / MCW +98 / SC +0.8 / Fat +0.001 / REA +0.12  
IMF +0.15 / BMI \$18 / CEZ \$16 / BII \$14 / CHB \$25

**Sire:** H5 Solution 064 [DLF, HYF, IEF]

**Donated by:** Lorenzen Farms, Chrisman, IL;

**Prairie Meadows Herefords, Springfield, IL; W4 Ranch, Morgan, TX**

#### C Stockman 2059 ET (DLF, HYF, IEF) • 2012 Reno Grand Champion

3 straws – 1 certificate

**EPD's:** CED +1.3 / BW +2.5 / WW +51 / YW +78 / Milk +29 / M&G +54  
CEM +2.3 / MCW +74 / SC +1.2 / Fat -0.014 / REA +0.50  
IMF +0.11 / BMI \$22 / CEZ \$17 / BII \$19 / CHB \$26

**Sire:** NJW 98S R117 Ribeye 88X ET (DLF, HYF, IEF)

**Donated by:** Colyer Herefords, Bruneau, ID;

**Pablo Martin Y Herrera, Buenos Aires, Argentina;**

**Ned & Jan Ward, Sheridan, WY**

#### NJW 98S R117 Ribeye 88X ET (DLF, HYF, IEF)

6 straws – 2 certificates

**EPD's:** CED +4.6 / BW +1.2 / WW +62 / YW +94 / Milk +30 / M&G +61  
CEM +5.5 / MCW +93 / SC +1.6 / Fat +0.003 / REA +0.45  
IMF +0.22 / BMI \$28 / CEZ \$21 / BII \$23 / CHB \$33

**Sire:** SHF Rib Eye M326 R117 [CHB, DLF, HYF, IEF]

**Donated by:** Colyer Herefords, Bruneau, ID;

**Ned & Jan Ward, Sheridan, WY; GKB Cattle, Waxahachie, TX;**

**Bill King, Stanley, NM**

#### F Pioneer 926 (DLF, HYF, IEF)

10 straws – 5 certificates

**EPD's:** CED +4.4 / BW +4.1 / WW +62 / YW +109 / Milk +41 / M&G +72  
CEM +3.0 / MCW +109 / SC +1.9 / Fat +0.016 / REA +0.42  
IMF +0.17 / BMI \$26 / CEZ \$19 / BII \$21 / CHB \$35

**Sire:** K 64H Ribstone Lad 157K (CHB, SOD, DLF, HYF, IEF)

**Donated by:** Doyle Hereford Ranch, Wolfe City

# SELLING

**1PM • Sunday • February 3, 2013**

**in the Whiteface Replacement  
Female Sale**

## 1 PEN

### Open Hereford Heifers

calved Nov. 2011 to Feb. 2012

**FUSTON**  
HEREFORDS  
TURKEY, TEXAS

940-867-7336  
P.O. Box 254 • Turkey, TX 79261

## *Selling in Fort Worth*

44th Annual Whiteface Replacement Female Sale  
Sunday, February 3, 2013 • 1PM  
West Arena, Fort Worth Stock Show Grounds

### Selling 3 Pens Hereford Heifers

2 Pens

born March-May 2011 bred to Hereford bull  
to calve after February 15, 2013

1 Pen

born Aug.-Sept. 2011 bred to Hereford bull  
to calve after September 1, 2013

**MILLIGAN**  
HEREFORDS

**Robert:** 815/562-6391 • **Jim:** 815/562-4946  
481 Church Rd. • Kings, Illinois 61868

# Selling

2 Pens

2-Year-Old Hereford Heifers  
bred to Hereford Bulls

at the 44th Annual  
Whiteface  
Replacement Female Sale  
Sunday, February 3, 2013



**summerour  
ranch**

Allan Ricketson, Ranch Mgr.  
806-333-0624 (cell)  
4438 FM 3212 • Dalhart, TX 79022

## WHITEFACE Replacement Female SALE

1PM • SUNDAY • FEBRUARY 3, 2013



### 1 Pen Hereford Heifers

Bred to Red Angus Bulls  
for spring calves



**Newly Hutchison • 580-886-5085**  
Rt. 1, Box 156 • Canton, Oklahoma 73724



Selling in the  
44th Whiteface Replacement Sale  
Sunday, February 3, 2013  
Fort Worth, Texas

1 Pen  
Hereford Heifers born Spring 2011

1 Pen  
Hereford x Angus born Spring 2011

Both pens pasture bred to a  
LBW Hereford bull from Berry of Wyoming  
and a LBW Angus bull from Evans Farm  
to start calving after 3-15-13

*All 1 brand, dehorned, cake broke and call to siren.*

JACKSON HEREFORD RANCH

Off: 254-647-1717 • Res: 254-647-3671

6481 Stephens CR 105 • Ranger, Texas 76470

44th Annual  
Whiteface  
Replacement Female Sale  
Sunday, February 3, 2013

**2 PENS**

March-April 2011  
**HEREFORDS**

bred to start calving Feb. 15, 2013  
to light birthweight Angus Bulls

**2 PENS**

March-April 2011  
**BALDIE HEIFERS**

bred to start calving Feb. 15, 2013  
to LBW Angus Bulls

Justin Dauer  
res: 806-537-5294  
cell: 806-683-7073  
P O Box 982  
Panhandle, TX 79068

*Selling* in the  
44th Annual  
Whiteface  
Replacement  
Female Sale  
SUNDAY  
February 3, 2013

*2 Pens*

of Open Angus x Hereford Heifers  
calved Feb.-Mar. 2012

*B*randon Farms  
405-880-6916  
2201 West Brake Road  
Newkirk, Oklahoma 74647

**Selling at the**  
44th Annual  
Whiteface Replacement Female Sale  
Sunday, February 3, 2013  
1PM • West Arena  
Fort Worth Stock Show Grounds

**1 Pen**  
**Hereford x Angus Heifers**

calved February 2011  
Bred April 1 to June 1, 2012  
to 1/2 Angus x 1/2 Jersey Bulls  
all will have calves at side

**H Ranch**

Jim & Kathleen Hill • 806-235-3776  
e-mail: hranch@xit.net  
P O Box H • Channing, TX 79018  
www.hranch.com



HORNED and POLLED HEREFORDS

**SUNDAY, FEBRUARY 3, 2013**



**LOT #3 • W4 18U Outcross 107Z**  
3-1-12 • P43336746

**Sire:** Golden Oak Outcross 18U [DLF,HYF,IEF]

**Dam:** C Ms Pure Gold 5007 ET

BW +5.0 / WW +61 / YW +99 / Milk +22 M&G +53



**LOT #14 • W4 955 Domino 138Y 3ET**  
3-19-11 • 43211704

**Sire:** CL 1 Domino 955W [DLF,HYF,IEF]

**Dam:** C Ms Pure Gold 5007 ET

BW +3.2 / WW +54 / YW +87 / Milk +25 / M&G +52



**LOT #26 • W4 Outcross Diva 102Z**  
3-1-12 • P43336747

**Sire:** Golden Oak Outcross 18U [DLF,HYF,IEF]

**Dam:** C Ms Pure Gold 5007 ET

BW +5.0 / WW +61 / YW +99 / Milk +22 / M&G +53

**Also selling 2 Pens of Hereford Heifers • 1 Pen Bred Hereford Heifers • 1 Pen Hereford Pairs  
in the Whiteface Replacement Female Sale on February 3, 2013**



**Jay Wright,**  
General Manager



**Jeff Chaffin,**  
Purebred Cattle Manager

**W4 RANCH**

BOSQUE COUNTY SINCE 1961

*Registered Herefords and Certified F-1s*

Jay Wright, General Manager • Office: 254-635-4444

Cell: 254-396-2584 • e-mail: jay@w4ranch.com

Jeff Chaffin, Purebred Cattle Manager

254-396-2785 • jeff@w4ranch.com

P. O. Box 9 • Morgan, Texas 76671

www.W4ranch.com

Joe Walker Land & Cattle, LTD





**Offering a Select Group of**  
 18 Bulls • 11 Females • 2 Flushes  
 5 Sets of Frozen Embryos  
 Herd Bull Prospects • Show Prospects

**Sunday, February 3, 2013**

**3PM • West Arena**

**SOUTHWESTERN EXPOSITION AND LIVESTOCK SHOW  
 FT WORTH, TEXAS**

**The SOURCE for the TOP GENETICS in the Hereford Industry!** *pictured are just a few of the select offering*



**MCS 802 LEGEND 85Z**  
 Sire: MCS 533P Ozzman 802 ET [DLF,HYF,IEF]

EPDs	BW	WW	YW	Milk	M&G
	+4.6	+54	+93	+20	+47

Consignor: MCS POLLED HEREFORDS



**MCC MANNEAX 12**  
 Sire: AY Advance 9810

EPDs	BW	WW	YW	Milk	M&G
	+4.7	+41	+69	+18	+38

Consignor: MANN CATTLE CO.



**GCC FULL SERVICE ET**  
 Sire: UPS TCC Nitro 1ET [CHB,DLF,HYF,IEF]

EPDs	BW	WW	YW	Milk	M&G
	+4.4	+55	+97	+16	+44

Consignor: GRUBBS CATTLE CO.



**CHURCHILL ILR CHISHOLM 1246YET**  
 Sire: CL 1 Domino 955W [DLF,HYF,IEF]

EPDs	BW	WW	YW	Milk	M&G
	+1.7	+53	+89	+27	+54

Consignor: IRON LAKE RANCH



**JC YCC AMERICAN SENTRY 1156**  
 Sire: YCC American 903 1ET

EPDs	BW	WW	YW	Milk	M&G
	+1.7	+43	+71	+26	+47

Consignor: JC CATTLE CO. / YOUNG



**BR CURRENCY Y108 ET [DLF,HYF,IEF]**  
 Sire: BR Currency 8144 ET [DLF,HYF,IEF]

EPDs	BW	WW	YW	Milk	M&G
	+3.8	+60	+88	+24	+53

Consignor: BARBER RANCH



**BF PERFECT POISON 174Y**  
 Sire: BF Domino Affect 702T ET

EPDs	BW	WW	YW	Milk	M&G
	+3.9	+57	+85	+27	+56

Consignor: BRUMLEY FARMS



**W4 955 DOMINO 138Y 3ET**  
 Sire: CL 1 Domino 955W [DLF,HYF,IEF]

EPDs	BW	WW	YW	Milk	M&G
	+3.1	+51	+85	+25	+50

Consignor: W4 RANCH



**NH CADD0 Y305**  
 Sire: HH Advance 8203U ET [CHB,DLF,IEF]

EPDs	BW	WW	YW	Milk	M&G
	+6.4	+54	+76	+17	+44

Consignor: NOLAN HEREFORDS



**DHD TURBO HH 1103 [DLF,HYF,IEF]**  
 Sire: Churchill Holland 987W ET [DLF,HYF,IEF]

EPDs	BW	WW	YW	Milk	M&G
	+4.9	+63	+100	+25	+56

Consignor: DOUBLE HEART DIAMOND CATTLE



**C&M NEW MEXICO LADY 2060**  
 Sire: H5 Solution 064 [DLF,HYF,IEF]

EPDs	BW	WW	YW	Milk	M&G
	+4.3	+61	+97	+30	+61

Consignor: C&M HEREFORDS



**BEACON HILL MAID MARIAN 1209**  
 Sire: KJ 2403 Recruit 966R [DLF,HYF,IEF]

EPDs	BW	WW	YW	Milk	M&G
	+3.4	+44	+60	+27	+49

Consignor: BEACON HILL RANCH



**MM MIA 1200 ET**  
 Sire: CL 1 Domino 955W [DLF,HYF,IEF]

EPDs	BW	WW	YW	Milk	M&G
	+3.6	+57	+94	+26	+55

Consignor: MIMMS HEREFORDS



**ILR 144U ATHENA M73 035Z ET**  
 Sire: TH 75J 243R Bailout 144U ET [DLF,HYF,IEF]

EPDs	BW	WW	YW	Milk	M&G
	+3.6	+53	+94	+20	+46

Consignor: IRON LAKE RANCH



**SFCC DC OSU MIRANDA 2303**  
 Sire: HH Advance 3196N [CHB,SOD,DLF,IEC]

EPDs	BW	WW	YW	Milk	M&G
	+4.4	+62	+97	+24	+55

Consignor: SIMS FAMILY CATTLE CO.



**TFR BROOKE 1204**  
 Sire: Star TCF Lock-N-Load 300W ET [DLF,HYF,IEF]

EPDs	BW	WW	YW	Milk	M&G
	+3.6	+47	+80	+24	+47

Consignor: TURKEY FEATHER RANCH

## CONSIGNORS

ATLAS FARMS  
 BARBER RANCH  
 BEACON HILL RANCH  
 BRUMLEY FARMS  
 C&M HEREFORDS  
 DOUBLE HEART DIAMOND CATTLE  
 GRUBBS CATTLE CO.  
 HOFFMAN HEREFORDS  
 IRON LAKE RANCH  
 JAB CATTLE  
 JC CATTLE CO.  
 LORENZEN FARMS - PRAIRIE  
 MEADOW HEREFORDS

MCS POLLED HEREFORDS  
 MANN CATTLE CO.  
 MARIPOSA CATTLE CO.  
 MIMMS HEREFORDS  
 NOLAN HEREFORDS  
 RAFTER J CATTLE CO.  
 RON SCHLEGEL  
 S-W HEREFORDS  
 SIMS FAMILY CATTLE CO.  
 TURKEY FEATHER RANCH  
 W4 RANCH  
 VANDERWORK HEREFORDS  
 CURTIS YOUNTS & SON

**Only the best horned and polled Hereford bulls and females are selling. Watch for catalog on the THA website: [www.texasheford.org](http://www.texasheford.org) • Broadcast live on Superior Productions**

**350  
HEAD!**

**Also plan to attend the**

**COMMERCIAL HEREFORD HEIFER SALE • 1:00 p.m. • West Arena**

**Texas Polled Hereford Association**  
 P.O. Box 1867 • Port Lavaca, Texas 77979  
 361/571-TPHA (8742)  
 email: [manager@tpha.net](mailto:manager@tpha.net)

**Texas Hereford Association**  
 4609 Airport Freeway • Fort Worth, TX 76117  
 817/831-3161 • 817/831-3162 (fax)  
 email: [texasheford@sbcglobal.net](mailto:texasheford@sbcglobal.net)

January 2013 • TEXAS HEREFORD 17



# SELLing

**Both in the Cowtown Select Sale • February 3, 2013**



**Lot 2 • MCC Manneax 12**

Here's the cattlemen's bull. Manneax could be THE best bull that has ever been raised on our place. He is huge ribbed, big topped, has tremendous muscle shape, big footed and still travels like a cat. His actual BW is 59 lbs and to top it off his actual WW is 685 lbs! If you're looking for the ultimate performance bull that still retains a sharp look to him, here he is! Contact Hadley for any questions. Retaining 1/2 Semen Interest.

**#43328194 • 03/02/2012**

**Sire:** AY Advance 9810 42444098

**Dam:** BR Kylie 7109ET P42876143

EPDs: CED +0.1 / BW +4.6 / WW +41 / YW +68 / Milk +18 / M&G +38  
CEM +2.2 / MCW +85 / SC +0.5 / FAT -0.029 / REA +0.28 / MARB -0.01  
BMI \$15 / CEZ \$15 / BII \$13 / CHB \$19



**Lot 9 • MCC Golden Bullet 11**

Ranchers Bull Deluxe! Here is a ripping good Ankonian Midas son and grandson to the great UPS TCC Nitro with TONS of future. He's long bodied, big boned, choke fronted, near perfect structure with loads of eye appeal. He ranks in the top 1% for REA, top 10% in WW and top 15% in YW and M&G. This Ring Eyed bull would be a great addition to any cow herd! Contact Hadley for any questions.

**#43328195 • 11/07/2011 • Scurred Bull**

**Sire:** Ankonian Midas 72 42262982

**Dam:** WCC/WB 5T Ms Natasha W01 P43014215

EPDs: CED -2.0 / BW +4.2 / WW +55 / YW +88 / Milk +22 / M&G +50  
CEM +1.2 / MCW +108 / SC +0.8 / FAT -0.001 / REA +0.74 / MARB +0.06  
BMI \$17 / CEZ \$12 / BII \$15 / CHB \$27



## **Mann Cattle Co.**

Hadley Mann- 432-788-8375 • Mark Mann- 806-762-8697 • Colby Mann- 432-847-9483  
e-mail: mannmen1@yahoo.com • www.manncattle.com  
Lubbock, TX



# C&M NEW MEXICO LADY 2060



Reg #: 43316309

DOB: 6/19/12

BW	WW	YW	MILK	M&G
+4.5	+56	+90	+29	+57

Churchill Yankee ET  
H5 Solution 064  
H5 MS 9213 Domet 410  
**C&M NEW MEXICO LADY 2060**  
NJW 57G 83M Remydy 95R ET  
C&M New Mexico Lady 7008  
MDP Micah 110

## • COWTOWN SELECT SALE •

February 3, 2013 | Fort Worth, Texas

- A quality show heifer prospect out of one of the top donor cows in our herd (7008) and H5 Solution 064. Juniors take note of her June birthday.
- 2060 is super feminine fronted, yet still very stout and massive, and correct on her feet and legs.
- She has the look to have an exciting show career, but if she produces as well as her mother, her best days could come later on.

Visit [CandMHerefords.com](http://CandMHerefords.com) for more pictures



Dam: C&M New Mexico Lady 7008



Nara Visa, NM  
Kyle Pérez (575)403.7971  
[CandMHerefords.com](http://CandMHerefords.com)

## MARK YOUR CALENDAR

1<sup>st</sup> Annual Bull Sale  
April 8, 2013 | 1 PM  
At the Ranch Nara Visa, NM

### OFFERING:

50+ Horned & Polled Hereford Bulls  
30 Commercial Cow-Calf Pairs



C&M NEW MEXICO LADY 7008 & 2060

# BOTH SELL

in Ft. Worth Cowtown Select Sale • February 3, 2013



Here's a unique summer yearling bull offered from JC Cattle and Young Cattle Company that oozes with style! This short marked bull puts together a combination both phenotypically and on paper that is made to impress. He was sired by one of the All-American sons that Yale offered through the Ft. Worth sale a few years ago, out of a K&B female whose pedigree is stacked with great genetics - 026K, 9126J, 3027, 014K - just to name a few. A bull that also has the potential to be a heifer bull with a super smooth shoulder and long spine and a low birthweight to boot! JC and YCC would like to retain 1/4 semen interest in this young sire.

Stout - is the word that comes to mind about this Larry son. JC Cattle is proud to offer one of his 1st intact sons ever to be sold, and these will be few and far between. GO Larry W26 tragically passed away last winter. With a limited semen supply, his females will never be sold off the ranch. 118 is out of a 9126J first calf heifer who is going to make a huge impact in our herd. She is ideally made - moderate in frame, extremely feminine, deep bodied and carries an absolutely perfect udder. The 7195T females have also made a name for themselves, being extremely maternal and functional. We expect no less from this young herd sire, take this young bull and use with confidence.

HH ADVANCE 028K 1ET [CHB,DLF,HYF,IEF]  
 YYJP MR ALL-AMERICAN 401 [DLF,IEF]  
 C MS PURE GOLD 2024  
 YCC MR AMERICAN 903 1ET  
 OXH DIAMND 0222  
 JC LADY DIAMOND 551 [DLF,IEF]  
 JC MISS ADVANCE 979  
**JC YCC AMERICAN SENTRY 1156 • 43314662 • 07/08/2011**  
 CL 1 DOMINO 9126J 1ET [SOD,CHB,DLF,IEF]  
 UPS DOMINO 3027 [CHB,DLF,HYF,IEF]  
 UPS MISS DIAMOND 1353  
 K&B LADY SENTRY 9130W  
 CL 1 DOMINO 0140K 1ET [SOD]  
 K&B DOMINETTE 2541  
 K&B MS ADVANCE 8435 [DOD]

EPDs	CED	BW	WW	YW	MILK	M&G	CEM	MCW
	+3.7	+1.7	+43	+71	+26	+47	+2.1	+70
	SC	FAT	REA	IMF	BMI	CEZ	BII	CHB
	+0.8	+0.009	+0.27	+0.15	\$18	\$18	\$16	\$22

L1 DOMINO 03571 [CHB,DLF,HYF,IEF]  
 HH ADVANCE 7195T [CHB,DLF,IEF]  
 HH MISS ADVANCE 3128N  
 GO LARRY W26 [DLF,IEF]  
 GO 3196 ADVANCE R20  
 GO MS LILY T133  
 GO MS L18 EXCEL P33 [DLF,HYF,IEF]  
**JC LARRY 118 • 43255742 • 03/02/2011**  
 HH ADVANCE 767G 1ET [SOD,CHB,DLF,IEF]  
 CL 1 DOMINO 9126J 1ET [SOD,CHB,DLF,IEF]  
 CL 1 DOMINETTE 490 [DOD]  
 JC DOMINETTE 903 ET  
 MR BEEF 9045 [SOD,CHB,DLF,HYF,IEF]  
 OXH MRNA 1333  
 OXH LONA 0125 [DOD]

EPDs	CED	BW	WW	YW	MILK	M&G	CEM	MCW
	+1.0	+4.6	+55	+91	+30	+57	-0.3	+102
	SC	FAT	REA	IMF	BMI	CEZ	BII	CHB
	+1.0	-0.002	+0.34	+0.02	\$16	\$14	\$13	\$26



## Cattle Co.

Cindy & Justin Brown • Junction City, Kansas  
 Jason, Lori, Cody & Kaycee Brown • Dwight, Kansas

Lori (785) 770-7469 or Cindy (785) 761-8994  
 2769 Humboldt Creek Rd. • Dwight, KS 66849





**Sells as Lot #21  
on Sunday,  
February 3, 2013**

**MM Mia 1200 ET** 04-15-2012 • Sire: CL 1 Domino 955W [DLE,HYE,IEF] • Dam: H Mia 9035 ET [DLE,HYE,IEF]

EPDs	CED	BW	WW	YW	MILK	M&G	CEM	MCW	SC	FAT	REA	MARB	BMI	CEZ	BII	CHB
	+0.5	+3.5	+59	+95	+26	+56	-0.7	+94	+1.0	+0.012	+0.45	+0.13	+\$18	+\$14	+\$15	+\$29

**T**his 955 daughter is a stout, deep ribbed female with tremendous length of body and eye appeal. She is very attractive through her head and neck and should be a successful show heifer and donor cow. Her dam H Mia 9035 was purchased from Hoffman in 2009 and is becoming a very successful donor cow for our herd. Mimms Herefords reserves the right to two successful flushes at the buyer's convenience and seller's cost.

**Mimms Herefords**

806-781-3400  
Lorenzo, Texas

*selling in the*



HORNED and POLLED HEREFORDS

**SUNDAY, FEBRUARY 3, 2013**

# Lot #25



## **RJ Kelly 206 • P43305129 • 03-14-2012**

206 heifer is long made, big rib, neat fronted with lots of style. She is a maternal sister to RJ Melissa 106 sold in the 2012 Texas Select Sale and won her class at the Junior National in Grand Island, NE. Kelly's sire is a full brother to BR currency 8144 ET. Her dam is known for producing great females. If you're a junior, this heifer is very gentle and would be an exciting one to haul.

EPDs	CED	BW	WW	YW	MILK	M&G	CEM	MCW	SC	FAT	REA	IMF	BMI	CEZ	BII	CHB
	-0.6	+3.6	+51	+77	+17	+42	+1.6	+99	+0.8	+0.005	+0.25	+0.04	\$17	\$14	\$15	\$22

DM BR SOONER [CHB,DLF,IEF]

BR CSF COPPER ET [DLF,HYF,IEF]

BR GABRIELLE 5082

### **RJ KELLY 206**

BR DM KEY DOMINO 0177

NLC 177 MS DOMINETTE 38R

K-K 108D MS TODAY J43

REMITALL ONLINE 122L [SOD,CHB,DLF,HYF,IEF]

DM L1 DOMINETTE 901

BR LANSING 3060

BR GOLDRIEL 3029 ET

REMITALL KEYNOTE 20X [CHB,SOD]

DM L1 DOMINETTE 518

STAR EMBLEM WS 108D

TRM MISS TOMORROW 4022



## **Rafter J Cattle**

Colt Johnson • 325-280-7975 (cell)

Larry Johnson • 325-201-2001 (cell)

Office 325-692-3940

Abilene, Texas

[rafterj@dishmail.net](mailto:rafterj@dishmail.net) • [www.rafterjcattle.com](http://www.rafterjcattle.com)



# Comin' to

# Cowtown

Iron Lake Ranch is headed to Fort Worth and bringing these feature lots to the Cowtown Select Sale.

**CHURCHILL ILR CHISHOLM**  
Bull 43237026



BW	WW	YW	Milk	REA	Marb	BMI	CEZ	BII	CHB
+1.7	+53	+89	+27	+.53	+.33	+25	+18	+21	+34
SIRE: CL 1 Domino 955W					DAM: Churchill Lady 202				

Chisholm is right for the times. He is a calving ease bull that still maintains good numbers for growth. His sire is the now famous Cooper Herefords 955W, who is fast becoming one of the top producers in the Hereford breed. Chisholm's Dam is Churchill Lady 202 who has produced such great herd and A.I. Sires as Churchill Yankee and Churchill Rancher. Three full brothers to Chisholm have sold to pure-bred herds and have averaged \$9,000. CO-OWNED WITH CHURCHILL CATTLE CO.

Selling ONE FLUSH. 0123X was the high selling female in the 2011 Churchill Pick of the Pasture Sale at \$15,000. She is sired by Outcross who is rapidly making a name for himself as one of the most quality consistent sires of the breed, having sired champions at both the Nat'l Jr. Hereford Expo and the Nat'l Western, and his first daughters in production show to have flawless udders. The dam of 0123X is CL 1 Dominette 825H, who has been one of the leading donors in the Cooper Herefords program, and she produced the top selling bull at the Calgary Bull Sale in 2010. 0123X IS CO-OWNED WITH CHURCHILL CATTLE CO.

**CHURCHILL LADY 0123X ET**  
Cow P43092375



BW	WW	YW	Milk	REA	Marb	BMI	CEZ	BII	CHB
+4.4	+56	+91	+16	+.51	+.11	+19	+.13	+17	+24
SIRE: Golden Oak Outcross 18U					DAM: CL 1 Dominette 825H				

**ILR 144U ATHENA M73 035Z ET**  
Cow P43301363



BW	WW	YW	Milk	REA	Marb	BMI	CEZ	BII	CHB
+3.6	+53	+94	+20	+.24	+.15	+23	+16	+21	+28
SIRE: TH 75J 243R Bailout 144U					DAM: KCF Miss 3008 M73				

This female's pedigree offers a long line of proven producers from two of the top programs in the nation. Bailout one of the top herd sires in the Langford and Perks herds is getting the job done all around the country producing outstanding cattle with lots of muscle and rib. The dam of 035Z is a top Dam of Distinction from the Knoll Crest herd and is backed with performance for generations. This heifer has plenty of depth and rib and will be an outstanding cow.



P.O. Box 751 • 8027 E.M. 1616, Athens, TX 75751

Dimitri Mataragas, *Owner*  
David Caraway, *Herd Manager*  
Robbie Schacher, *Consultant*

214-649-0071  
903-802-3373 cell  
817-219-0102 cell

**CHURCHILL CATTLE**  
CO.

Dale & Nancy Vanhuizen  
406-580-6421 cell • 406-284-6421 home

# Selling Sunday, February 3, 2013



This is an exciting polled herd bull prospect by the popular UPS Nitro. I am offering this young prospect in his entirety that many who have visited our place fell in love with and thought to be one of the best polled bulls available. This is an extremely thick, sound made and functional bull that will really go to work and start making money for his new owner from day one.

This bull, just like his sire Nitro is scurred and we have had them surgically removed. The Nitro bull is siring some of the hottest calves in the industry and this young prospect is just another example; he sired a heifer that sold here last year in the Cowtown Select sale for \$13,500.00 along with many other top sellers in years past. This is a great young bull prospect that will only get better once you get him to his new home. Please check out our web page at [www.grubbscattle.com](http://www.grubbscattle.com) for upcoming video.



EPDs	CED	BW	WW	YW	MILK	M&G	CEM	MCW
	-0.1	+4.4	+55	+97	+20	+47	+2.4	+135
	SC	FAT	REA	IMF	BMI	CEZ	BII	CHB
	+0.7	-0.012	+0.57	-0.03	\$16	\$14	\$12	\$26

## GCC FULL SERVICE ET • P43320422

GH NEON 17N [CHB]  
 UPS TCC NITRO 1ET [CHB,DLF,HYF,IEF]  
 LCC TWO TIMIN 438 ET  
 NS LAKES KILO 002 [CHB]  
 LAKE BJG IRIS 209N [DLF,HYF,IEF]  
 DRF C&L IRIS 93E 27J

GH DIFFERENCE BRITISHER 45L [CHB]  
 GH SIR SIMBA LASS 107K  
 REMITALL ONLINE 122L [CHB,SOD,DLF,HYF,IEF]  
 RST ROF REBA 28H  
 JSF 37 271 DEVO 23C [SOD]  
 GK APOLLONIA 834Z  
 DRF GERBER E-MALE 93E [SOD]  
 WBF LADY DOM F243 6T

Watch for our consignment, Lot 28, at the  
 2013 Mile High Night Sale  
 during at the National Western Stock Show in Denver  
*Pick of Five Heifers*

**Grubbs Cattle Co.**  
 817-366-6376





HORNED and POLLED HEREFORDS

Sunday, February 3, 2013



S-W 3105 Notorious 942 Z ET • 43267309 • (scurred) Bull • DOB: 1/03/2012

S-W 3105 Notorious 942 Z ET is by C Notorious ET, a full brother to C New Era, and out of CL 1 Dominette 3105. The sire of Notorious is UPS TCC Nitro 1 ET, and his dam is the great C Notice Me ET. 942 is dark red, smooth shouldered, strong topped and resembles his sire in body length and muscle shape. He brings balanced traits. With a top 15% for BW he will have the ability to moderate birth weights, and carries forward the solid maternal characteristics from his Cooper dam.

942's dam is CL 1 Dominette 3105N 1 ET, an 8104 daughter, and goes back to the great 178 (DOD) in Cooper's herd. She ranks in top 15% in MM, and top 10% in CE. She is a maternal half sister to CL1 Domino 212M that topped the Cooper bull sale in 2003 at \$54,000.

EPDs	CED	BW	WW	YW	MILK	M&G	CEM	MCW	SC	FAT	REA	IMF	BMI	CEZ	BII	CHB
	+1.6	+2.0	+42	+74	+21	+43	+2.9	+92	+0.9	-0.017	+0.36	+0.03	\$19	\$17	\$17	\$21

UPS TCC NITRO 1ET [CHB,DLF,HYF,IEF] GH NEON 17N [CHB]  
LCC TWO TIMIN 438 ET

**C NOTORIOUS ET [DLF,HYF,IEF]**

C NOTICE ME ET [DLF,HYF,IEF]

**S-W 3105 NOTORIOUS 942Z ET**

CL DOMINO 048K [DLF,IEF]

**CL 1 DOMINETTE 3105N 1ET**

CL 1 DOMINETTE 8104H 1ET

C -S PURE GOLD 98170 [CHB,SOD,DLF,HYF,IEF]  
HH MISS ADVANCE 104A [DOD]  
HH ADVANCE 767G 1ET [SOD,CHB,DLF,IEF]  
CL 1 DOMINETTE 838H  
L1 DOMINO 95461 [SOD,DLF,IEF]  
CL 1 DOMINETTE 178 [DOD]

**S-W Herefords**

BENNINGTON, OKLAHOMA

Neal Spencer 817-845-1382 • nspencer03@yahoo.com

Ryan Westbrook 580-775-8053 • rmwsnap@yahoo.com

www.swherefords.com

# He Sells!!

**February 3, 2013 • Fort Worth • Cowtown Select Sale**



## *What's Your Perfect Poison?*

BF Perfect Poison 174Y (43218442) • DOB: 5/1/2011 • BW 76 • YW 1240 • 3/4 Interest and Full Possession Sells

Sire: BF Domino Affect 702T ET • Dam: BF Pure Poison 610S ET

EPDs: CED -.09 / BW +3.6 / WW +57 / YW +84 / Milk +27 / M&G +55 / CEM -.01 / MCW +87 / SC +0.8 / Fat -.027 / REA +0.58 / Marb -.09 / BMI \$15 / CEZ \$12 / BII \$13 / CHB \$25

Combines some of the most prolific genetics with soundness, structure and eye-appeal

Division Champion Western Nugget National Open Show • Champion Bred & Owned Bull Junior Show

See him on The Hill in Denver!

**Brumley Farms**  
↓  
**F**

Don, Skeeter, Kari, Brooke and Bryce • P.O. Box 239, Orovado, NV 89425  
775-272-3152 • Cell 209-479-0287



HORNED and POLLED HEREFORDS



160Y is a goggle-eyed, red to the ground, meat machine. There are no surprises in the 66T cow's pedigree. Stop by our stalls to see his wet two year old half sister. 160Y will add pigment, performance, muscle definition and improve udders.

**See him in our stalls at Denver.  
He sells February 3**

GO L18 EXCEL T31 [DLF,HYF,IEF]

CRR HELTON 980 [DLF,HYF,IEF]

CRR 9B JULIANNE 405 [DLF,HYF,IEF]

**ATLAS MR 66T WARRIOR 160Y ET**

PW VICTOR BOOMER P606 [SOD,HF,HYF,IEF]

JJD VICTORIA 66T ET [DLF,HYF,IEF]

JJD VICTORIA GOLD 2018 [DLF,HYF,IEF]

GO EXCEL L18 [CHB,SOD,DLF,HYF,IEF]

GO MS 3196 ADVANCE R134

C&L DOUBLE TIME 452M 98 [SOD]

CRR D03 JULIANNE 217 [DLF,IEF]

REMITALL BOOMER 46B [CHB,SOD,DLF,HYF,IEF]

PW VICTORIA 964 8114

C-S PURE GOLD 98170 [CHB,SOD,DLF,HYF,IEF]

JJD VICTORIA 109W 112

EPDs	CED	BW	WW	YW	MILK	M&G	CEM	MCW
	-4.4	+5.0	+59	+91	+32	+62	-0.9	+93
	SC	FAT	REA	IMF	BMI	CEZ	BII	CHB
	+0.8	+0.011	+0.65	+0.09	\$13	\$9	\$11	\$27

Flush mates and 1/2 sibs for your inspection at the farm.

**ATLAS**  
Herefords

**Jimmy and Claudia Atlas**

Cell: 817.456.4691

Home: 817.790.0202

4920 CR 401 • Grandview, TX 76050

atlasfarms@sbcglobal.net



**BREEDING CATTLE THAT WORK FOR OUR CUSTOMERS.**





## Lot #18



DHD TURBO HH 1103 • 2nd in Class behind the overall Grand Champion of Show at the 2012 American Royal National Show.

EXPECTED PROGENY DIFFERENCE							
GED	BW	WW	YW	MILK	M&G	CEM	MCW
-0.5	+4.8	+62	+97	+56	+42	+0.8	+109
SC	FAT	REA	MARB	BMI	CEZ	BII	CHB
+0.6	+0.002	+0.65	+0.08	+\$15	+\$12	+\$11	+\$30

Looking for an outstanding bull prospect with a 78 lb. birth weight? Turbo is the cattleman's herd bull dream. He is balanced and thick with a deep body and all the carcass potential. He has had some strong outings in the show ring. We used this bull on a set of heifers and cows and plan to retain a 1/4 semen interest. He is one high potential prospect.



CHURCHILL DUTCH -S 738T [CHB]  
**CHURCHILL HOLLAND 987W ET [DLF,HYF,IEF]**  
 CHURCHILL LADY 412

**DHD TURBO HH 1103 [DLF,HYF,IEF]**

W4 4011 DOMINO S025 [CHB,DLF,IEF]

**CHURCHILL LADY 962W**

CHURCHILL LADY 657S

GH NEON 17N [CHB]  
 CHURCHILL LADY 404 [DOD]  
 CL 1 DOMINO 285M [CHB,SOD,DLF,HYF,IEF]  
 CHURCHILL LADY 2100  
 C 212 DOMINO 4011 ET [CHB,DLF,HYF,IEF]  
 CHURCHILL LADY 0191  
 GH NEON 17N [CHB]  
 CHURCHILL LADY 2132 [DOD]



## Double Heart Diamond Cattle Company

Dave, Jessye and Rachel Goertz • 308-935-1292 or 308-631-4250  
 Fax: 308-935-1596 • e-mail: goertzherefords@yahoo.com  
 79483 Highway 2 • Berwyn, NE 68814



# UPSTREAM RANCH

## Annual Production Sale Saturday, February 2, 2013

1:00 CST at the ranch

*Selling*

- 230 Bulls including 100 coming 2-yr olds, 125 fall yearlings, and 5 bull calves
- 50 Heifers including 35 bred heifers and 15 heifer calves



**Lot #68**



**Lot #6**



**Lot #123**



**Lot #35**



**Lot #235**

LOT#	NAME	BIRTHDATE	SIRE	BW	WW	YW	Milk	M&G	REA	MARB
6	UPS SENSATION 2276	4/9/12	CHURCHILL SENSATION 028X	0.9	60	97	22	52	0.81	0.14
35	UPS NAVARRO 1086	3/30/11	UPS NAVARRO	4.7	46	74	27	50	0.19	0.25
68	UPS SPARTAN 1231	4/13/11	DS SPARTAN 8008	0.5	54	77	23	50	0.42	0.28
123	UPS DOMINO 1544	9/11/11	UPS DOMINO 5216	3.4	51	85	29	55	0.31	0.19
235	UPS HELTON 1874	9/15/11	CRR HELTON 980	4.9	50	82	23	48	0.36	0.13

- First breeding season guarantee.
- Free delivery or \$100/head trucking discount.
- Fertility, performance, and carcass tested.
- Range developed, sound and not overconditioned



Brent and Robin Meeks  
Home 308-942-3195 • Cell 308-214-0719  
45060 Upstream Rd • Taylor, NE 68879

broadcast by Superior Productions on RFD Network  
view videos on [upstreamcattle.com](http://upstreamcattle.com)  
[upstreamranch@gmail.com](mailto:upstreamranch@gmail.com)





# YOU DESERVE THE BEST

# 1/5 HOFFMAN R·A·N·C·H

*modern, stout, functional*

Hoffman/W4 LLC

## First Annual Bull Sale | Thedford, NE February 15, 2013 | 1PM (CST)

100+ Hereford Bulls & Commercial Females

OFFERING YEARLING AND 18 MONTH OLD REGISTERED BULLS

Call today for details  
or to request a catalog

Jason Hoffman (530) 604-5096

Denny Hoffman (406) 425-0859

Email: [jason@hoffmanranch.com](mailto:jason@hoffmanranch.com)



BW 3.7  
WW 65  
YW 104  
Milk 25  
REA 0.65  
MARB 0.29  
BMI 25  
CHB 35

H WR OUTCROSS 225 ET Reg#: 43295650 Polled  
Golden Oak Outcross 18U x HH Miss Advance 5017R



BW 2.6  
WW 53  
YW 96  
Milk 31  
REA 0.50  
MARB 0.26  
BMI 22  
CHB 32

H W4 LIGHTS OUT 2015 ET Reg#: 43295675 Horned  
CL 1 Domino 955W x C MS Pure Gold 2003



BW 3.5  
WW 55  
YW 93  
Milk 21  
REA 0.27  
MARB 0.02  
BMI 18  
CHB 25

H DOMINO 222 ET Reg#: 43295358 Horned  
CL 1 Domino 955W x HH Miss Advance 5152R



BW 3.7  
WW 51  
YW 78  
Milk 18  
REA 0.19  
MARB -0.01  
BMI 14  
CHB 20

H CRACKER JACK 224 ET Reg#: 43295360 Polled  
AH JDH Cracker Jack 26U ET x HH Miss Advance



BW 5.3  
WW 63  
YW 107  
Milk 17  
REA 0.83  
MARB 0.15  
BMI 21  
CHB 32

H AC OUTCROSS 230 ET Reg#: 43295644 Polled  
Golden Oak Outcross 18U x H Victory 600 ET



BW 3.2  
WW 52  
YW 84  
Milk 22  
REA 0.64  
MARB 0.16  
BMI 22  
CHB 31

H GH ABOUT TIME 239 ET Reg#: 43295421 Horned  
CRR About Time 743 x H Paula 625 ET

LiveAuctionsTV bid online

VIEW BULL LISTING AT [HoffmanRanch.com](http://HoffmanRanch.com)



# The "Brand That Works"

## PRODUCTION SALE

**Tuesday, February 26, 2013 • 12:30 p.m.**

**Manhattan Commission Co. • Manhattan, Kan.**

**Selling: 100 Fall and Spring Yearling Hereford and Angus Bulls**

**80 Hereford and Angus Females**

*Spring Pairs, Heavy Breds, Fall 3 and 1's*

*Show Heifer Prospects and Proven Donors*



**Progeny and service of these sires sell:**

**Churchill Rancher, Harland 408, GO 3196 Advance S109, UPS Domino 3027, Victor 719T, Revolution 4R, C 212 Domino 4011, CL 1 Domino 860U, Moser 242 All-Around 17U**



**MCR 3027 Harlands Domino 1218 • 43281508**

8/26/2011

Sire: UPS Domino 3027 • Dam's Sire: CJH Harland 408

MGS: OXH Mark Domino 8020

CE 4.4; BW 4.5; WW 60; YW 109; MM 33; M&G 63; MCE 1.7; MCW 89; SC 1.2; FAT 0.013; REA 0.51; MARB 0.30; BMIS 21; CEZ\$ 18; BII\$ 16; CHB\$ 36



**MCR Revolutions Domino 1211 ET • 43281535**

8/26/2011

Sire: MSU TCF Revolution 4R

Dam's Sire: C-S Pure Gold 98170

MGS: CL 1 Domino 386

CE 0.1; BW 3.3; WW 60; YW 95; MM 23; M&G 54; MCE 0.8; MCW 78; SC 0.8; FAT 0.013; REA 1.01; MARB 0.00; BMIS 17; CEZ\$ 13; BII\$ 14; CHB\$ 29



**MCR Harland Gold Domino 225 ET • 43293334**

1/10/2012

Sire: CJH Harland 408

Dam's Sire: C-S Pure Gold 98170

MGS: CL 1 Domino 386

CE 1.1; BW 2.0; WW 49; YW 83; MM 29; M&G 53; MCE 1.8; MCW 78; SC 1.4; FAT 0.048; REA 0.42; MARB 0.26; BMIS 22; CEZ\$ 16; BII\$ 20; CHB\$ 25



**MCR Ranchers 408 Domino 216 ET • 43293332**

1/9/2012

Sire: Churchill Rancher 592R

Dam's Sire: CJH Harland 408

MGS: OXH Mark Domino 8020

CE 1.3; BW 3.8; WW 60; YW 97; MM 27; M&G 57; MCE 1.9; MCW 107; SC 1.4; FAT 0.045; REA 0.42; MARB 0.40; BMIS 24; CEZ\$ 16; BII\$ 21; CHB\$ 33

**MCR 408 Gold Dominet 808 ET • 42929304**

- Harland 408 x 239 (Pure Gold x 035 - 552's Dam, the great 386 daughter)
- CE -0.2; BW 4.1; WW 57; YW 101; MM 27; M&G 56; MCE 1.0; MCW 91; SC 1.2; FAT 0.042; REA 0.56; MARB 0.00; BMIS 17; CEZ\$ 13; BII\$ 14; CHB\$ 25
- Progeny Performance: WW 123.5/2 head; YW 117.5/2 head; REA 102.5/4 head; IMF 89/4 head



**Mill Creek Ranch**

20635 Hessdale Rd.

Alma, KS 66401

Dave Breiner 785-449-2841

Cell 785-456-4790

Chad Cell 785-564-2091



**Pied Piper Farms**

Northern Division

Bob and Derek Moore

423 E. Lake Dr.

Hamlin, TX 79520

800-338-4610





## 280 Head Sell

**155 HEREFORD BULLS • 75 ANGUS BULLS**

**INCLUDES TWO YEAR OLDS, JUNIOR AND SENIOR CALVES**

**50 Hereford & Angus Heifers**

Sale Catalog is available on our website [www.hereford.com](http://www.hereford.com)

# “BEST OF THE BEST” 33<sup>rd</sup> ANNUAL PRODUCTION SALE MONDAY, FEBRUARY 25, 2013

**AT THE RANCH— BRUNEAU, IDAHO**

COMPLETE PERFORMANCE DATA INCLUDING EPDS, PELVIC AND  
SCROTAL MEASUREMENT, ULTRASOUND AND CARCASS DATA

— Free Delivery to Central Points —



**Lot 78 - C Tapped Off 2222 ET**  
BW 3.9 WW 48 YW 73 MILK 23 IMF .06 REA .66  
Outstanding son of Untapped and Notice Me. Big time herd bull potential. Full sister topped our fall sale at \$50,000.



**Lot 37 - C 88X Notice Me 2103 ET**  
BW 2.5 WW 51 YW 78 MILK 29 IMF .11 REA .50  
Full brother to “Stockman,” the 2012 Reno Grand Champion Bull. He has so many of the qualities we are searching for in today’s industry. Lots of muscle and depth of body with balance and style. 3 full sisters in our fall sale averaged just under \$30,000. Six full brothers will sell.



**Lot 83- C Bar1 Untapped 2248 ET**  
BW 4.5 WW 54 YW 86 MILK 22 IMF .03 REA .78  
We feel this is one of the elite herd bulls to sell this year. He combines quality and balance with a tremendous amount of muscle shape and body depth. Dam topped our 2009 fall sale selling to Bar One Ranch.



**Lot 74 - C Notice Me 11X 2205 ET**  
BW 2.7 WW 52 YW 72 MILK 25 IMF .03 REA .64  
Powerful genetic package combining Mr Hereford and Notice Me. He is extremely long sided and has that extra look and balance from the side. He is very smooth from beginning to end and has added pigment to go with his standout pattern.



**Lot 88 - C R111 Sentinel 2264 ET**  
BW 2.6 WW 50 YW 85 MILK 25 IMF .18 REA .37  
One of the unique bulls in the sale. Offers low birth with top carcass, growth and maternal. We look forward to using him in our program as well.



**Lot 89 - C Bar1 9161 Untapped 2267 ET**  
BW 4.5 WW 54 YW 86 MILK 22 IMF .03 REA .78  
Big time Polled herd bull prospect. You will love his balance and pattern. He blends so many good things into one package.



**Lot 41 - C R111 Mr Hereford 2109 ET**  
BW 2.6 WW 56 YW 84 MILK 21 IMF .02 REA .54

Three flush brothers by Mr. Hereford and the powerful donor cow R111. They all are deep red in color and have added look and quality to go with their tremendous EPD profile. These brothers should offer tremendous versatility when mating because of their low birth weight and high milk and growth numbers. Full sister sold for \$28,000 to Iron Lake in our fall sale.



**Lot 49 - C R111 Mr Hereford 2128 ET**  
BW 2.6 WW 56 YW 84 MILK 21 IMF .02 REA .54



**Lot 90 - C Bar1 9161 Untapped 2268 ET**  
BW 4.5 WW 54 YW 86 MILK 22 IMF .03 REA .78  
An Untapped son with a big top and as much upper hip as any in the offering. Eye catching because of his added dimension and bold rib shape. His extra eye pigment and deep red color is an added bonus to his impressive phenotype. Dam topped our 2009 sale.



31058 Colyer Road  
Bruneau, ID 83604  
(208) 845-2314 Fax  
[www.hereford.com](http://www.hereford.com)

**LiveAuctions. TV**

Live Internet Bidding  
For more information,  
visit [www.liveauctions.tv](http://www.liveauctions.tv)

Guy, Sherry & Katie Colyer (208) 845-2313 • Guy’s cell (208) 599-0340 • [guy@hereford.com](mailto:guy@hereford.com)  
Kyle & Bobby Jean Colyer (208) 845-2098 • Kyle’s cell (208) 250-3924 • Ray and Bonnie Colyer (208) 845-2312



RESERVE CHAMPION HORNED FEMALE • C 88X NOTICE ME 2067 ET  
HORNED FEMALE SHOW • Gary and Kathy Buchholz, Waxahachie



CHAMPION OWNED FEMALE JUNIOR SHOW  
C 11X 8238 NOTICE ME 2102 • Tristen Carnley, Clifton

## Reno Showcases Hereford Champions



RESERVE CHAMPION BRED-AND-OWNED FEMALE  
RESERVE CHAMPION OWNED FEMALE • JUNIOR SHOW  
BR BAILEE 1066 ET • Rylee Barber, Channing

BF 144U Sweet Thing 2103 ET and Triple-A 9121 Rebecca 5Y topped the female shows at the Western Nugget National Hereford Show Dec. 7-8 in Reno, NV, while C Stockman 2059 ET and TCW Role Model 28M 208Y won the bull shows. Also during the show, Dan L. Forsea & Sons Ranch was honored with the 2012 Lifetime Cattleman Award.

Lee Haygood, Canadian, TX, judged the 195-head show, and complimented the bull and female exhibitors both days describing the show as "tremendous from top to bottom." On bull show day he added, "Today we've not had tons of numbers but we've had tons of quality. Along with phenotype the cattle have also had good, balanced numbers."

BF 144U Sweet Thing 2103 ET came out on top of the polled show. She is bred and owned by junior Kari Brumley, Orovada, NV, and is a March 2012 daughter of TH 75J 243R Bailout 144U ET. Earlier in the week Sweet Thing also won champion bred-and-owned female honors in the junior show.

Reserve in the polled female show and champion in the junior calf division was C Eye Candy 2079, owned by Piper and Cruz Colyer, Bruneau, ID, and sired by NJW 98S R117 Ribeye 88X ET.

In the horned female show, Triple-A 9121

Rebecca 5Y was chosen champion horned female after winning the junior yearling division. She is owned by Kelsey Stimpson, Melba, ID.

Reserve champion horned female was C 88X Notice Me 2067 ET owned by Gary & Kathy Buchholz, Waxahachie, TX. She is a January 2012 daughter of NJW 98S R117 Ribeye 88X ET.

Colyer Herefords, Bruneau, ID; Pablo Martin Y Herrera, Buenos Aires, Argentina; and Ned and Jan Ward, Sheridan, WY, exhibited champion horned bull, C Stockman 2059 ET, first to the junior calf division title. He is a January 2012 son of NJW 98S R117 Ribeye 88X ET. Reserve champion horned bull won the senior bull

division, Desert Comfort 037. Largent & Sons, Kaycee, WY, own the son of L3 Desert Fox 842 ET.

In the polled bull show, yearling division winner, TCW Role Model 28M 208Y, by Golden-Oak 4J Maxium 28M was slapped champion. He is owned by Rees Bros. Herefords, Morgan, UT, and Weimer Cattle Co., Susanville, CA.

Reserve champion polled bull SB 54E 75R Fusion 138X ET by Lambert Remedy 2030 75R first won the senior bull division. He is owned by Split Butte Livestock, Minidoka, ID, and Stallings Polled Herefords, Eugene, OR.

Colyer Herefords exhibited the champion pen of three bulls. The group included C Tapped Off 2222 ET, C 88X Ribeye 2059 ET and C Bar 1 Untapped 2248 ET. BB Cattle Co. Connell, WA, exhibited the reserve pen. The group included BB 3027 Domino 2026, BB Yankee 2037 and BB 626S Neon 2036.

Colyer Herefords earned many banners including premier horned breeder and exhibitor and premier polled breeder. The polled premier exhibitor and best six head banners went to Weimer Cattle Co. Colyer Herefords also exhibited the first-place horned get of sire with a group sired by NJW 98S R117 Ribeye 88X ET.

The 113-entry junior show was judged by Jirl Buck, Madill, OK, on Dec. 6. Kari Brumley,

Orovada, NV, won champion bred-and-owned female with BF Sweet Thing 2103 ET. Reserve champion bred-and-owned and reserve champion owned female honors went to Rylee Barber, Channing, TX, with BR Bailee 1066 ET by DM BR Sooner.

Champion owned heifer was C 11X 8238 Notice Me 2102 by TH 71U 719T Mr Hereford 11X owned by Tristen Carnley, Clifton, TX.

In the bred-and-owned bull show, Brooke and Kari Brumley, Orovada, NV, added to their list of accomplishments with BF Perfect Poison 174Y by BF Domino Affect 702T ET claiming the champion title.

Reserve bred-and-owned bull was exhibited by Cody Simpson, Bend, OR. SCC Cash Advance 3102 is a March 2012 son of Purple Currency 24U ET.

### Additional Texas polled division results

**Reserve polled junior calf champion heifer:** Iron Lake Ranch, Athens, TX, and Jared Lide, Mexia, TX, with C R111 Ms Hereford 2088 ET

**Polled fall calf champion heifer:** Gary & Kathy Buchholz, Waxahachie, TX, with GKB TMH New Era Breeze B169 ET

**Reserve polled spring yearling champion heifer:** Gary & Kathy Buchholz; Colyer Herefords, Bruneau, ID; and Jacqueline Rosson, Milford, TX, with C GKB R111 Lady Advance 1225 ET

### Additional Texas horned division results

**Reserve spring calf champion heifer:** Gary & Kathy Buchholz with GKB B927 Miss Platinum B231 ET

**Reserve junior calf champion heifer:** Tristen Carnley, Clifton, TX, with C 11X 8238 Notice Me 2192

**Reserve fall calf champion heifer:** Jacqueline Rosson with GKB EJE New Era Breeze B168 ET

**Yearling champion bull:** Gary & Kathy Buchholz and Colyer Herefords with C Notice Me Maxium 1206 ET

### Additional Junior Show results:

**Reserve champion junior showman:** Rylee Barber, Channing, TX





**Harry Born**

transferred back to Roswell. He also trained for a time at B-47 Mechanic School at Amarillo, Texas.

Harry spent four years active duty and four years reserve duty in the Air Force and was honorably discharged in 1960. After serving in the Air Force, Harry returned back home to continue working at the ranch in Lipscomb County and over time built the farming operation into Ochiltree County as well. In the early years from the 1940's to the 1960's a partnership was formed with his father and brother, known as Alex Born & Sons. Alex Born was also awarded an honorary membership to the Texas Hereford Association.

In the 1970's to the present time the operation ownership changed as Alex retired from the day to day duties of the ranch and Born Herefords was formed. One of the more prominent herd sires in the 1960's was HDR Real Onward 166, purchased from Hull Dobbs and later an interest was sold to Winrock Farms, Sulphur, OK. Many of his sons were sold and served in registered herds across the U.S. including Tex Advance Onward 3rd, Tex Real Onward 266, Tex Real Onward 74, and Tex Real Onward 19. These bulls served in herds such as JP Calliham, Indian Mound Farms, New Harmony, Indiana, Everett Brown, Valentine, Nebraska.

Many of the 166 sons and daughters were shown across the country winning individual championships as well as excelling in the carcass testing and evaluation. His offspring qualified him as Super ROM excelling in both the show ring and carcass point system.

For many years, Harry competed in Denver, both on the hill and in the yards. He was on the halter of Tex Dandee H when he was made reserve champion in Denver as well as numerous champions and reserve champion division carloads.

One of the more memorable Denver events happened when Born Herefords and Granite Hills, Llano, Texas bought Denver Champion Le Grand Domino 7184 for a record \$ 301,000. One of his grand sons, Tex Prime Time was later made Denver Grand Champion as well as siring the champion carload that same year.

Harry has retired from the day to day ranching and farming operations, but currently helps as needed with the harvesting activities. ★

Harry Born was born and raised in Lipscomb County. He married his wife, Lillian, in 1950 and they raised four sons, Stanley, Darrell, Lynn, and James. Stanley raises show steers, Darrell was killed in an electrical accident on the ranch in 1979, and Lynn raises registered Herefords and runs commercial cows and James farms in Ochiltree County. To date, Harry and Lillian have 8 grandchildren and 13 great-grand children.

Harry enlisted in the Air Force in 1952. His basic training was at Lackland Air Force Base in San Antonio, Texas. He was transferred to Shepherd Air Force Base in Wichita Falls, Texas, where he was trained as a B-36 mechanic. Upon completion there he was transferred to Walker Air Force Base in Roswell, New Mexico, where he worked as a B-50 mechanic. During this time he was sent to Guam for a time to work on B-50 airplanes. He was then



**Denny Fuston**

Denny was born and raised in the big city of Turkey, Texas. He attended Turkey schools and graduated in 1960. While attending school he was very active in sports and the county 4H program. He exhibited Hereford heifers and steers.

Following completion of High School, he entered West Texas State University from 1961-1965. While in college he married the love of his life Mitchie House.

Denny and Mitchie raised two children. Mike and Lesia which he is very proud to say are very much involved in the Hereford business.

During college he was a member of the block and Bridle Club and the Livestock Judging Team.

Following college Denny went to work for the USDA for seventeen years. He resigned from USDA in 1983 to return to the family farm and ranch in the Turkey area.

After returning home to ranch, Denny has been actively involved in raising cotton, Hereford cattle and doing his best to promote the Hereford breed. ★

# Honorary Member

---



**John and Ann Gunter**

John and Ann Gunter have spent a lifetime in agriculture. Both were raised on diversified Ag operations. Ann was raised in Jonesboro in Coryell County on a row crop, cattle and goat farm. John was raised in Rogers in Bell County on a ranching operation that included some diversified row crop and pecan operations as well. The ranch in Bell County

was begun in the late 1940s by John's father (Calvin Orville or C.O.) who had been raised on a similar operation near San Saba.

The cow/calf operations they grew up on were typical, similar to those that were common for family farms and ranches of the time throughout central and west Texas. Ann's parents still live in the same area and farm and ranch much of the same ground. Her brother, Don Bales, has both continued and expanded the operation. The San Saba operations were hit hard when both C.O.'s father and grandfather passed away during the Depression, so after World War II he went looking for an opportunity to start anew in Bell County.

John grew up ranching on mostly recovered farm ground and "flint rock" hills near Rogers. After graduation from Texas A&M with a degree in Animal Science he came back to Rogers and began working on expanding the commercial cow/calf operation, but also began looking for opportunities to diversify in less traditional ways. The cattle market in the 70's ultimately forced him to be more creative than even he intended in his diversification. Not content to just find a job to support the family and cattle, he instead started a new business of his own that was closely aligned with another entrepreneur. Both businesses took off and they ultimately manufactured and sold fitness and rehabilitation equipment (utilizing hydraulic cylinders) around the world.

But ranching was never far from John and Ann's heart. Still liv-

ing in Rogers and running commercial cattle, they had also begun raising two children (Calvin and Todd). As kids in small towns often do, the kids began looking at 4-H projects. As those discussions began, John had a piece of advice for Calvin, "Don't raise steers and sell them like I did. Raise heifers and build something for the future." Little did even he know what that would mean.

From almost the beginning, the ranch in Rogers had run commercial cows and used Hereford bulls. So, when looking for heifers, the obvious choice was Herefords. That started the ranching operation down a path that would enable John to pursue his entrepreneurial interest in earnest. At about the same time, John began both building a registered Hereford herd and pursuing preconditioning and stocker opportunities. For the next two decades, that became the dual focus of their agricultural interests. John and Ann expended the size and scope of the operations considerably, eventually even buying out his siblings' interest in the original land that C.O. had put together near Rogers.

These pursuits ultimately came to define the Gunter family in many ways and forged the lifelong connections between the Gunter family and the Hereford industry that continue through today. The 4-H projects eventually grew into hauling cattle all across the country to regional and national Hereford shows. That in turn led to Calvin's involvement in the Texas Junior Hereford Association and eventually to becoming a National Director in the American Junior Hereford Association. Ann went from fixing tails on show calves to her considerable involvement in the Texas and American Hereford Auxiliaries.

The cattle operations have slowed down over the last few years as Calvin has lived predominately out of state and John had a successful battle with cancer. However, the entrepreneurial spirit has never waned. John and Ann sold the hydraulic fitness business in the late 90's; but eventually restarted it and are aggressively pursuing those opportunities at the moment.

John and Ann continue to be involved in the Texas Hereford Field Day in Belton each year and they remain significantly involved in the local Bell County show. While the cattle operations have taken a backseat to other endeavors since the mid 2000's, they are likely to be re-invigorated soon, as well. Calvin, whose career has been in Livestock ID, Genetics and now Disease Diagnostics, and his wife Jenny and daughters Isabella and Wilhelmina have recently been able to move back to Texas, and John and Ann still live on the ranch near Rogers. There's nothing bothering the Gunter's cattle operations that a little rain wouldn't help. ★

## Friend of THA

---

The deCordova Family of Groesbeck, Texas owns and operates Buffalo Livestock Marketing, Inc., a local livestock market in Buffalo, Texas and deCordova Cattle Co., a family run order buying company in Groesbeck, Texas. Buffalo Livestock has hosted the Texas Hereford Fall Classic bull sale for the past two years.

The family consists of Russ deCordova and his two sons, Cody and Ty. They are the fourth generation of the deCordova family working in the livestock auction business. Russ's late father, Russell deCordova and grandfather, the late Irvin deCordova, along with Franklin Jackson, built and established the Groesbeck Auction and Livestock Company in 1952. They operated the business until 1972 with Russ, like his sons, beginning their education in the cattle industry in an auction barn at an early age. Russ, Cody and Ty also have experience in online cattle marketing. All three are representatives employed by Superior Livestock in Fort Worth, the first satellite cattle auction in the country.

The deCordova Family have operated deCordova Cattle Co. for thirty years, with Cody and Ty growing up in the business. They purchased Buffalo Livestock from Burt Richards in 2006. It was and has been an established livestock market for over four decades and continues to thrive under the family's operation with over 150 registered buyers and a diverse selection of cattle, running approximately 85,000 head a year. The deCordova's hold an auction forty-eight Saturdays out of a year and conduct many special sales with specialized inventory on a regular basis. Russ, Cody and Ty, along with their wives, play a specific role in the daily sale operation every week.

Russ and his wife, Debbie, also have a daughter, Amie, who resides with her husband and three sons in Peaster, Texas. Cody and his wife, Emily, have a four year-old daughter, Gracie. Ty and his wife, Jennifer, have a four year-old daughter, Peyton, and a 10 month-old daughter, Tylar. Russ, Cody and Ty and their families reside in Groesbeck, Texas. ★



The Jackson Ranch was established on the banks of the Ironi (Iron Eye) Creek, Stephens County, TX with 160 acres by Jerry Robert and Iona Lynch Jackson in 1891. After 121 years and five generations of Jacksons, the ranch has grown to over 8000 acres of rangeland and farmland. It is currently operated by the Jackson Family Partnership (Jackson FLP) Robert Joe and Dena Jackson, Smokey and Shirley Jackson Eppler, Tye Jackson, Jacob and Shelby Williams Jackson.

In 1925, Robert Jackson brought the first registered Hereford cattle to the ranch. Later under his son, Joe Lynch Jackson and his wife Toppy's management the herd increased to over 500 registered cows in the 1970's.

After years of drought, floods and fire, the ranch runs 75 registered and 100 commercial cows. The bloodlines are Mark Donald, Line One and Canadian outcross influenced. Extensive AI is used with proven bulls and followed with quality herd sire cleanup. Embryo transfer is utilized on select donors that have proven calves raised naturally before flushing. The commercial herd is exclusively bred to registered Angus bulls tested free of genetic defects and have strong carcass and maternal EPDs. The ranch strives to raise bulls ready to work and cows that can thrive in harsh conditions.

Jackson Ranch has expanded enterprises to include wildlife, hunting, and Rural Events. Shirley and Smokey Eppler maintain a horse breeding and training operation with "Speck of Frisk" standing at stud.

The hunting enterprise consists of Morning dove, Whitetail deer, Rio Grand turkey, feral hogs, coyotes, varmints, and rattlesnakes. The ranch is Charter members of the Caddo Wildlife Management Association for 21 years and maintains harvest data and follows strict guidelines that go beyond the state laws to improve deer quality.

The rural events center was formerly the old "Oakley Schoolhouse" from south of Breckenridge, Texas. It was moved to the Gardenhire homeplace on the Jackson ranch from the city park in Breckenridge in 1989. Rural style weddings, community meetings, family reunions, corporate retreats, and other meetings are held there.

In 1991, the Jackson family received the "Family Land Heritage Certificate of Honor" from then Ag Commissioner Rick Perry for a century of continuous land ownership as a family agriculture enterprise.

In 1996, Jackson Hereford Ranch received the "Lone Star Land Steward Award" for the Cross Timbers and Prairies of Texas in recognition of outstanding efforts in conservation of wildlife habitat.

In 2003, Robert Joe and Dena were honored with the "2003 Agriculture Citizens of the Year" by the Stephens County Chamber of Commerce.



PHOTO BY JOHNNY B. PHOTOGRAPHY

## Jackson Ranch Family

In 2009, Dena was recognized as "Booster of the Year" by the Texas Hereford Auxiliary.

Of all the awards received, the most honored is the coveted "Bud Snidow Award" in which all three of the latest generations of Jacksons were recipients. Tye and Jacob are the only siblings to have both received this National award and Shelby was honored in 2007.

The Jackson Hereford Ranch has been a member of the Texas Hereford Association since the 1950s. The family has been a part of the Fort Worth Stock Show since the 1970s with Joe Jackson serving on the Agriculture Advisory Board. Tye, Jacob, and Shelby have all shown cattle in the Junior and open Hereford Shows with numerous Champions. The ranch has consigned cattle embryos and semen to the Select Sale, the Commercial Heifer Sale, and donated to the Challenge Pen. Jackson Hereford Ranch has also donated to the Open Show Junior Scholarship Fund every year since it started.

This past two years, Dena has been serving as president of the Texas Hereford Women's Auxiliary and Shelby will be coming on as chairman of the Queens Contest. Dena has been a voting delegate for the state of Texas at the American Hereford Association Annual meeting in Kansas City, MO for four years and has also served as a director for the Texas Hereford Association for four terms.

The Jackson family has supported the Texas Junior Hereford Association almost every year since 1989 in some way. They believe the future of the Hereford breed lies in the education and support of the next generation and will continue to be an influence for generations to come. ★

## Booster of the Year



**Gary and Kathy  
Buchholz**

Gary and Kathy Buchholz own and operate GKB Cattle in Waxahachie, Texas. GKB Cattle consists of a registered Hereford operation utilizing AI and embryo transplant to incorporate current genetics.

Gary was born in Illinois and moved to Texas with his family when he was two. He has been in the cattle business since high school when he purchased his first herd of Angus cows. After graduating from college at East Texas State University, he taught agriculture education in the Duncanville school district for 11 years. In the fall of 1984, Gary moved on to be in the purebred cattle business full time.

Kathy is a fourth generation Hereford breeder from west Texas. Her father continues to run the family Hereford ranch today near Midland. Kathy was involved in 4-H and FFA growing up. She earned a bachelor degree and a master degree in land economics from Texas A&M University.

Gary and Kathy met at the Fort Worth Stock Show in the 1970's and they were married in 1987.

They operated Buchholz Bros. Shorthorns until 1992. In 1998 they moved to Waxahachie and began to concentrate on their Hereford herd.

Both Gary and Kathy have a special place in their heart for helping children and the youth livestock programs. They have supported these programs over the years through judging cattle and showmanship, volunteering as youth advisors and leaders with in breed organizations and at the local level of 4-H and FFA activities. Gary and Kathy have served as advisors for the National Junior Hereford Association since 2008. They served as Texas Junior Hereford Association advisors from 2000-2003.

The Buchholz' are passionate about the organizations that they are a part of and about the Hereford breed. In 2008, Kathy was named the Outstanding Hereford Woman of the Year by the American Hereford Women. Gary has served on the Texas Hereford Executive committee the last several years and is the 2012 president-elect for the Texas Hereford Association. ★





# 22nd Annual San Antonio Livestock Show All Breeds Bull & Commercial Female Sale

*Selling The Best Bulls & Females  
That Texas Has To Offer!*



**February 12 & 13, 2013  
At The San Antonio Livestock  
Show Auction Facility**

## **Schedule of Events**

### **Tuesday, February 12**

8:00 A.M. - 12:00 Noon - Viewing of Sale Cattle  
12:30 P.M. - All Breeds Bull Show  
2:30 P.M. - Commercial Female Show  
Sponsored by Capital Farm Credit

### **Wednesday, February 13**

7:30 A.M. - Cattlemen's Breakfast  
10:00 A.M. - All Breeds Bull Sale  
The Commercial Female Sale is immediately following  
the All Breeds Bull Sale

## **• FEATURING •**

***525 Commercial Females - Pairs, Bred &  
Open Heifers of All Breeds***

***60 Breeding Age Bulls - These cattle will be the best from  
some of the top ranches throughout Texas.***

This sale will be broadcast live on the internet.

**DVAuction**

Broadcasting Real-Time Auctions

Real time bidding & proxy bidding available.

 **NOVARTIS**  
ANIMAL HEALTH

*For more information or sale catalogs contact:*

**Anthony J.  
MIHALSKI**

7320 Triple Elm N.  
San Antonio, Texas 78263  
(210) 648-5475 Office • (210) 648-4939 Fax  
aj1mihalski@aol.com

**Southern Livestock  
Publishing, Inc.**

Jim Banner - Michael Sturgess  
P.O. Box 791364  
San Antonio, Texas 78279-1364  
(210) 524-9697 Office • (210) 524-9690 Fax  
slivestock@southernlivestock.com







## Midcontinent Livestock Supplements Forage Enhancing Program

Recondition the  
cows after  
weaning.

Get calves off  
to the right  
start.

**MLS #1 SUPPLE-LIX**

**All natural protein tub with high vitamin and trace minerals levels for cattle needing both protein and minerals on roughage diets.**

### MLS #5 STRESS

**An all natural protein,  
energy, vitamin, and trace  
mineral tub for young  
cattle during weaning,  
shipping, or stress. Has  
Availa®4 from Zinpro®**

[www.mlstubs.com](http://www.mlstubs.com)

**Kyle Latham---254-715-2162**



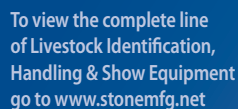
# QUALITY PRODUCTS THAT WORK FOR YOU

Quality comes first at Stone. We've been making handcrafted products for livestock producers since 1932. Over the years we've learned a great deal about quality. You can see it in the meticulous detail and workmanship of our products, and you can feel it in the way they perform.

We know you're only going to choose Stone products if they perform to your complete satisfaction. Above all, we understand that our products must not only make your job safer, easier and more effective, they must also add to your bottom line.

We value quality and performance just as much as you do. The best way to appreciate the true quality of a Stone product is to experience it for yourself.

*"We take pride in making quality products that work for you." – Jack Rudnay, CEO*



MANUFACTURING & SUPPLY COMPANY

**QUALITY • SERVICE • INNOVATION**  
1212 Kansas Ave. Kansas City, MO 64127  
(816) 231-4020 • Fax (816) 241-3336





**PROUD TO SUPPORT  
THE TEXAS HEREFORD ASSOCIATION**

**Identification Ear Tags**  
All-American® & LoneStarEZ™



**Insecticide Ear Tags**  
XP 820™, PYthon® Magnum™,  
PYthon®, WARRIOR™, OPtimizer®,  
and GardStar Plus®



**Brute® Pour-on for Cattle**  
Brute® provides excellent residual control  
of biting and sucking lice, Gulf Coast ear  
ticks and horn flies.



**RFID Systems**  
RFID ear tags, matched pairs, hand held  
readers, stationary readers and antennae.



**MADE IN THE USA**

Superior Value – Proven Performance

**Y-TEX CORPORATION**

Check out our new website [www.ytex.com](http://www.ytex.com)

e-mail: [ytexinfo@ytex.com](mailto:ytexinfo@ytex.com)





# EAST

## H<sup>2</sup> RANCH AND CATTLE CO.

KEVIN W. HARTLEY

h2ranch@rodzoo.com

7787 ROCKY RIDGE LN • MADISONVILLE, TX 77864

OFFICE: 936-349-0439

MOBILE: 936-661-0306

## Gibbs Ranches

W. Paris Gibbs, Jr.

Box 11 • Caldwell, TX 77836

(979) 567-3740

## Still River Ranch

Larry Woodson • 214-491-7017

Bonham, Texas

ranch located 10 miles south of Bonham  
and 1 mile south of Gober

Raising cattle in Texas since 1855

## SKRIVANEK RANCHES

Joey & Susan Skrivaneck, owners  
407 W. Mustang • Caldwell, TX 77836

Joey res. (979) 567-3857 • cell (979) 224-4698 • office:  
(979) 567-3131 • ranch (979) 272-8133 • fax (979) 567-2373  
9 miles E. of Caldwell on Hwy 21, or 15 miles W. of Bryan-College Station on Hwy 2

## Harry & Cheryl Grett

512-303-5714

P. O. Box 969

Elgin, Texas 78621

g3ranch@aol.com

## BAR S HEREFORDS

Larry Schatte

1091 P.R. 4481

Giddings, TX 78942

(979) 366-2451

## ATLAS FARMS

Your Texas Meat & Milk Factory

Claudia, Precious & Jimmy Atlas  
4920 CR 401 • Grandview, Texas 76050  
(817) 790-0202 • (817) 456-4691 (mobile)  
email: atlasfarms@sbcglobal.net

## NOLAN HEREFORDS

Scott, Alise, Ilissa, Bethany & Audrey  
1950 Skylark Rd. • Gilmer, TX 75645  
nolanherefords@aol.com

www.nolanherefords.com

Res.: 903-797-6131 • Cell: 903-738-5636



Terry Tolbert  
936-371-9218

Joe Bennet  
509-551-6104

3841 FM 2782

Nacogdoches, TX 75964

## Noack Herefords

"Quality Registered Herefords"

7- BULLS FOR SALE 7-

Office: 512/446-6200 • Cell: 979/218-0065



## Herrmann

Cattle Co.

Herefords Since 1938

P.O. Box 366 • Caldwell, TX 77836 • 979/567-4204

Clay Herrmann

Carl Herrmann

Braford Div. • 979/567-9604

Hereford Div. • 979/567-9465

## BAR OAK RANCH

RANDALL BARNES & SONS

HEREFORD BREEDERS

TOLAR, TEXAS

(817) 279-3543 Randall

(817) 243-5867 Craig



www.barokranch.com

email us at:

herefords@barokranch.com



## Williams Family Herefords

Herb and Susan Williams

158 P.R. 2531

Hwy 51 N. • Decatur, TX 76234

Herb cell (940) 393-1650

Home (940) 466-3381 • Ranch (940) 627-5325

herbsusan@msn.com • www.williamsfamilyherefords.com

## Decker

KJB

## CATTLE SERVICES

Custom Fittings

Junior Show Prospects For Sale

Hillsboro, Texas

(254) 582-1952

(972) 938-1952

## Jackie Pullen

Est. 1985

## PULLEN HEREFORDS

972-571-5906 CELL • 972-722-5081 RES

460 Pullen Road • Rockwall, TX 75032

## GKB Cattle

Hereford Cattle

Gary & Kathy Buchholz

P.O. Box 2807, Waxahachie, TX 75168

Res: 972-937-0417

Cell: 214-537-1285

Fax: 972-937-0418

Cell: 214-537-1306

"Stressing Excellence In Polled Herefords"



## Larsons' Polled Herefords

Ken and Carolyn Larson, Owners

972-223-6450 Office • 972-223-8955 Home

254-435-6063 Ranch Office • 972-230-0629 Fax

Lee Larson, executive mgr • 972-824-5869 Cell

2793 F.M. 1991 • Clifton, Texas 76634

www.larsonspolledherefords.com • RunLRanch@aol.com

## The Doyle Difference

"Genetics of today's leading  
performance families."

## DOYLE HEREFORD RANCH

P.O. Box 73 • Wolfe City, TX 75496

mobile: 214/240-4538

http://www.bullshop.com/tx/doyleherefordranch.php

email: mdoyle0326@yahoo.com

## LEE TERRELL

REAL ESTATE

Residential • Farms • Ranches

Commercial • Property Evaluations

(903) 868-2505 • Res. (903) 893-2289

cell (903) 815-1299

2404 San Miguel • Sherman, TX 75092



## THREE D RANCH

PAUL DAVIS

RT. 1, BOX 242 M

ROCKWALL, TEXAS 75087

972/771-3396 (RANCH)

972/771-5653 (OFC.)

MIKE HAWKINS, MGR.

972/348-7049 (CELL)

## Jim G. Bell

F • A • R • M • S

"Selling Hereford Bulls Since 1952"

Off: 936-867-5126 • Res: 936-867-5125

3275 FM 1819 • Pollok, TX 75969

## Sam Dominey • Whispering Pines

3312B SH 19N  
Huntsville, TX 77340

936.594.3986 (res)  
936.291.3009 (office)

# BULLS FOR SALE

## Sunny Hill Ranch

Pete Johnson

Registered Polled Herefords

Hwy. 94 West • 5 Miles

Office

805 Sayer

Lufkin, TX 75904

Office: (936) 632-1465

Home: (936) 875-2398

e-mail: pijmhj@yahoo.com



## Mathias

Registered Herefords & Paint Horses

Kurt • Brenda

192 CR 4040 • Mt. Pleasant, TX 75455

903-572-2396 • kmathias@txt.net

## NELSON

Land and Cattle Co.

Corporate Office:

2415 Coll Rd. Suite C

Piano, Texas 75075

972-594-4335

jnelson@mpreston.com

Ranch Office: Ron Dugger

HC 71 Box 1075 • 1273 Highway 99C

Kingston, OK 73439

903-816-3704

rdugger@aol.com



## McClatchy

Eagle Hereford Ranch

Registered Horned

Joel & Dianne McClatchy • Cell: 214-850-5926

206 Lakehill Dr. • Rockwall, TX 75087

Ranch: 1000 HCR 1212 • Blum, TX 76627

# CENTRAL / SOUTH

**B** "Registered Herefords Since 1938"

**DUDLEY BROS.** Box 10, Comanche, Texas 76442

Office: 325/356-2284 • Fax: 325/356-3185  
John: 325/356-3767 • Tom R.: 325/356-3918  
E-Mail: dudleybros@comanchetx.com

*Lone Star*

A.L. "Dusty" Rhodes  
Ranch: 940-867-0918  
Office: 325-673-3200  
Res.: 325-673-7592  
Fax: 325-673-2840  
lonestarhereford@yahoo.com

**Hereford Ranch**  
1150 Estates Drive  
Abilene, TX 79602

**C/2**

**Cattle Co.**  
Pearsall, TX

"For Quality Hereford Cattle  
'Bulls & Females  
Call  
Louie & Helen Carroll  
503 #, Trinity  
Pearsall, TX 78061  
830/334-2973

**EDGAR HEREFORD RANCH**

 Bobby & Agatha  
P.O. Box 68  
4525 Cty Rd 295  
Blanket, Texas 76432  
Cell: 325-642-2651  
email: abedgar@cctc.net

**Mockingbird Hill**  
Established in 1854

Bulls, Females, Club Calves

P.O. Box 516 • Mineral Wells, TX 76067  
817-244-2637 res. or 940-325-2033 ranch  
Ranch located 10 miles south of Mineral Wells on US281

**Howard Herefords**  
Quality Herefords Since 1950  
Bulls & Females For Sale  
Visitors Always Welcome

DAVID HOWARD P.O. Box 1039  
830/988-2241 SABINAL, TX 78881

**Hidden Oaks Ranch**

Keith, Cindy, Shelby, Koby,  
Harley & Brody Rogers  
171 CR 407  
Hamilton, TX 76531  
(254) 386-5699  
www.hiddenoaksranch.com  
e-mail: hereford@wildblue.net  
"Raising respectable kids and herefords"

**MW HEREFORD RANCH**

P.O. Box 1754 • Brownwood, TX 76804  
325/646-0956 or 646-5501 (office)

"Top Quality Herefords" "Home of Pathfinder"

**ROCKIN' W**  
POLLED HEREFORDS

 Maynard Warnken • 979-561-8846  
Kevin Warnken • 979-561-8108  
e-mail: rockinw@cvctx.com  
www.rockinwranch.net  
Fax 979-561-8867 • Drawer 29 • Schulenburg, TX 78956

**Jackson Hereford Ranch**

**JJ** 6481 Stephens CR 105  
Ranger, Texas 76470  
Robert & Dena • (254) 647-3671  
Fax (254) 647-3622  
denajackson@agristar.net  
Ranch located 15 miles north of Ranger on FM 207

**W. K. GORDON, JR.**  
RANCHING OPERATIONS

1546 FM 203  
Walnut Springs, TX 76690  
(254) 797-5322

PERFORMANCE PROGRAM BREEDER

**NEEL POLLED HEREFORDS**

George E. Neel, Jr.  
Box 450029 • Laredo, TX 78045  
(956) 723-6346 Office  
(956) 722-1904 Home

**BULLS FOR SALE**  
LANG HEREFORD RANCH

 6416 CR 3420  
Lampasas, TX 76550  
512/556-6469 • cell: 512/556-7956  
wandalang48@yahoo.com

**Circle M Ranch**

P.O. Box 405  
Meridian, TX 76665

 Jane S. Murphey  
Manager  
254/855-1276 (cell)  
254/435-2162 (res.)

Registered Herefords since 1956

**Winsauer Herefords**  
713/471-3994

P.O. Box 39 • Beeville, TX 78104  
Ranch located 4 miles east of Beeville on Ellis Rd.  
Visitors Welcome

**Lesley Herefords**

Roy Lesley 254/965-5123  
Kenneth 254/965-4603  
31681 U.S. Hwy. 67E  
Stephenville, TX 76401



**Ross Wilson Herefords**

Ross Wilson • 254-965-6566  
2305 W. Lingleville Rd., Apt. 22  
Stephenville, TX 76401  
Joe D. Sherrod • 512-809-3470  
Ranch located 4 miles west of Gorman, TX

**SPEARHEAD RANCH**

Paul and Sheila Funk • 254-289-7657  
525 County Road 51  
Copperas Cove, TX 76522-7004  
sheilabfunk@aol.com • www.spearheadranch.net



**Sjolander Ranches**

George 254-379-8983  
Jan 254-412-8213  
Residence 254-896-2219  
1290 PR 504 • Riesel, Texas 76682



*Flying 'S' Herefords*

Registered Line One Herefords • Paluxy, Texas

Jim Strode 214-361-6900 James Strode 214-533-9669  
Rick Wilson 817-219-2225  
James.strode@gmail.com



**CY**  
Curtis Younts & Son  
Established in 1959  
Curtis Younts, Jr.

3648 Elmer King Rd. • Belton, TX 76513  
254/939-6492 (residence) 254/760-0243 (cell)

**Muleshoe Ranch**

J.T. Echols DVM  
P.O. Box 709 • Breckenridge, TX 76424  
Office: (254) 559-9739  
Mobile: (254) 559-0156  
muleshoeranch@gmail.com  
muleshoeherefordandangus.com



**WESLEY THEURET**

Res./Ranch: 830-583-3365  
Cell: 210-315-0103

2348 CR 165 • Kenedy, TX 78119-5101  
theuret@sbcglobal.net

**ALPHA EQUINE BREEDING CENTER**

Hereford Bulls with Eye Pigment  Breeder of great Cutting Horses

M.C. Baker, DVM  
Clint Baker, Mgr. • 817-279-8275  
www.alphaequine.com  
2301 Boyd Road • Granbury, TX 76049  
Fax 817-279-7621

**RSS** **R. SCHLEGEL & SONS** 

Route 2, Olney, TX 76374  
Registered Herefords Since 1974  
Bulls, Females, Club Calves  
email: rsshrfd@brazosnet.com

Ranch (940) 873-4437 Home (940) 873-4621

**COVERED M CATTLE CO.**

Joshua Martin • Cell 210-260-7273  
Residence: 830-393-4783  
475 CR 224 • Floresville, TX 78114  
e-mail: coveredmcattle@gmail.com  
www.coveredmcattleco.com



# WEST

## FUSTON HEREFORDS

Mike Fuston  
(806) 423-1303  
Cell (940) 867-7336 • mike@fustonherefordranch.com

Denny Fuston  
(806) 423-1118

## Honeymoon Herefords

"Breeding cattle for the 21st century."

Robert L. Mezger  
614 Honeymoon Ranch Rd.  
Marble Falls, TX 78654  
830/598-2258



## B-BAR-HEREFORDS

Brad, Glenna, Lyndi,  
Hunter & Danci Stuart

876 SH 70S  
Roby, Texas 79543  
Res. (325) 235-5402  
Mob. (325) 338-5111



"Visitors Are Always Welcome"



**DAVID CARVER**  
806-879-2166 Office  
806-292-4444 Mobile

**JIM BOB CARVER**  
806-488-2325 Night  
806-679-2370 Day

AHA Golden Breeder Award • Est. 1929

## LEE HEREFORD RANCH

Ira F. Lee  
6467 Seawillow Rd. • Lockhart, TX 78644  
512/398-3032  
e-mail: iralee@hughes.net  
Registered Herefords For Sale

**Cole & Susan Turner**  
**940-742-3347**

Rt. 1, Box 254  
Rochester, TX 79544

## CASE Ranch

### HEREFORDS

Box 1218 Eldorado, TX 76936

Ranch: 325/853-2368 FAX: 325/853-2681  
Pete Case: 325/650-6209 http://www.caseranch.com  
email: pete@caseranch.com  
Ranch Rd. 915 - Between Eldorado and Mertzon

David Moore  
325/576-3684 ofc.  
325/576-2205 res.  
e-mail: info@piedpiperfarms.com  
website: www.piedpiperfarms.com



P.O. Box 309  
HAMLIN, TEXAS 79520

## Coates Ranch Co.



www.coatesranch.com

Box 645 • Mertzon, TX 76941  
Steve Wayne: 325-835-2531  
Stephen: 325-226-4184  
Email: scoatesjr@yahoo.com

## McINNIS CATTLE COMPANY

Est. 1896  
e-mail: mcinnis@centex.net  
www.mcinniscattle.com  
14200 Highway 183 N. • May, TX 76857

**Bill McInnis**  
325-646-3884 home  
325-646-3234 fax  
**Ben McInnis**  
325-646-4134 home  
325-647-4159 cell  
**Bill's cell:**  
325-642-8823

## YOUNGBLOOD RANCH

"Registered Herefords Since 1937"



Arlan  
2500 E. Hwy. 180  
Lamesa, TX 79331  
806/497-6412  
Mobile: 806/759-8102

## J—HEREFORD RANCH

Jim Darnell - Owner  
5 Paseo de Paz Lane, El Paso, TX 79932  
915-479-5299 (Jim's Cell) • 915-549-2534 (Sue's Cell)  
915-532-2442 (Office) 915-877-2535 (Home)  
e-mail: barjbarherefords@aol.com  
"Texas' Only Hereford Operation West of the Rio Grande"  
Se Habla Espanol



## JAMES L. POWELL

www.powellranches.com  
Ft. McKavett, TX 76841

325/653-1688 Office  
325/853-2316 Res.

David Neal  
Ranch Manager  
325/651-2826

Ranch located 25 miles  
east of Eldorado on Hwy. 190.

Britt Mynatt  
Herd Manager  
325/653-2202

## KNOX Y HEREFORDS

Tee & Joan Knox  
Box 68 • Tarzan, TX 79783  
432/459-2273  
www.knoxherefords.com  
Cattle for sale at the ranch.

## McKNIGHT Ranch Co.

Bobby McKnight, Ranch Manager  
432/426-3003  
P.O. Box 1042 • FT. DAVIS, TEXAS 79734

## ROCKING CHAIR RANCH



**L.C. Whitehead, Owner**  
Randy Wood, Mgr. • 325/396-4911  
Mark McClintock, Consultant  
Mobile: 325/650-4223  
5749 Rocking Chair Lane  
Ft. McKavett, TX 76841

## BUTTON ESTES RANCH, LTD.

BUTTON ESTES, JR. & PATRICIA ANN ESTES  
1921-1998 GENERAL PARTNER  
432/683-1406 • Fax 432/570-7769  
2000 WEST TENNESSEE • MIDLAND, TEXAS 79701  
BEAU & BARBARA 432/682-2272 • GINNY 432/687-2454

## RAFTER J CATTLE CO.



Colt Johnson • 325-280-7975  
Larry Johnson • 325-692-3940  
1917 Hillside Rd • Abilene, TX 79603  
rafterj@dishmail.net • www.rafterjcattle.com

## WEINHEIMER RANCH, INC.

Established in 1921  
For All Your Cattle Needs

Roy 830/644-2226 Box 957 Len 830/889-2026  
Stonewall, TX 78671

## Mimms Herefords

Jerry, Brady, Rhett & Ryan  
Lorenzo, Texas  
806-842-3459



## LINE ONE HEREFORDS

• Light Birth Weights • Gentle Disposition  
• Milk and Growth • Longevity

CIRCLE ME RANCH Gardendale, TX • Seminole, TX

Miles and Mary Eckert  
16020 N. Wichita Ave. • Gardendale, TX 79758  
432/563-2627 (Res.) • 432/559-9667 (Off/Ranch)

Since 1947

## Walker Herefords

Stamford, TX • La Grange, TX

Don 325-773-2062

Tom 979-247-4119 • Cell 979-966-8353

## Show Steers For Sale

### MANN CATTLE CO. LUBBOCK, TX

The Functional Kind

Mark, Briss, Hadley and  
Colby Mann  
Hadley (cell) 432-788-8375  
Mark 432-788-7075  
Res. 806-762-8697  
e-mail: mannmen1@yahoo.com  
www.manncattle.com



## SCHARBAUER RANCH LLC

Known for the best commercial Herefords  
and ranch horses in the state.

To purchase Hereford females or horses call:  
Chris Scharbauer  
Res. 806-935-9411 • Cell 806-679-7995  
P.O. Box 50008 • Amarillo, TX 79159



## CLYDE HENSON

P. O. Box 820 • Kermit, TX 79745  
432-940-8882



## Massey Hereford Ranch

Sam and Kila Massey  
P. O. Box 518 • Wickett, TX 79788  
432-940-7720  
Sam.Massey@co.ward.tx.us  
www.masseyherefordranch.com



## FEBRUARY 2, 2013

Make plans to attend  
THA ANNUAL MEETING  
in Fort Worth


# PANHANDLE / OUT-OF-STATE / COMMERCIAL



## RANCHES, INC.

**Jo Ellard, Owner**  
P. O. Box 802207 • Dallas, Texas 75380  
Office (972) 532-2100 • Fax (972) 532-2190

**Ray Meyer, Manager**  
RR 1, Box 108A • Fall River, Kansas 67047  
(620) 658-4494 • Fax (620) 658-4426



**TOMMY BARNES**  
-AUCTIONEER-  
189 River Road  
Lowndesboro, AL 36752  
334/462-4004



### Indian Mound Ranch

923 Hillside Ave. • Canadian, TX 79014  
**Lee & Jacqui Haygood**  
Res: 806/323-8232  
Cell: 806/323-2906  
Email: lee@indianmoundranch.com  
www.indianmoundranch.com



**Glynn Debter**  
(205) 429-2040  
**Perry Debter**  
(205) 429-4415  
Fax  
(205) 429-3553  
4134 Co. Hwy. 30 • Horton, AL 35980



### SCHACHER

AUCTION SERVICES  
**Robert Schacher**  
817-219-0102  
5832 Wales Ave., Ft. Worth, TX 76133  
rob@schacherauction.com  
www.schacherauction.com

### BARBER RANCH

Channing, Texas 79018  
Dale & Mary Barber 806/235-3692  
Justin Barber 806/681-5528  
www.barberranch.com  
email: barberranch@wildblue.net

Michael & Connie Perez  
575/633-2038  
Michael's cell  
575-403-7970  
Kyle's cell • 575-403-7971  
Drew's cell • 575-403-7115  
901 Quay Road 96 • Nara Visa, NM 88430




### LEO CASAS, III

Off: 361-362-COWS • Fax 361-362-1035  
Cell: 361-362-5863  
casascattle@hotmail.com  
171 Fairway Ridge • Beeville, TX 78102



### Mike & LaReshia Bragg

1923 Shawnee Trail  
Dalhart, TX 79022  
home 806-249-5367  
cell: 806-333-4486  
website: mlcattle.com • Email: mlcattle@mlcattle.com



**COOPER**  
HEREFORD  
RANCH  
Mark & Cristy  
off: 406-285-6985  
cell: 406-539-6885  
P.O. Box 126  
Willow Creek, MT 59760  
mark@cooperherefords.com  
www.cooperherefords.com



### Silveus

INSURANCE GROUP  
877.773.9633  
www.rangelandinsurance.com

### B & C CATTLE CO.

**Bill or Chad Breeding**  
1301 N. Lions • P.O. Box 186  
Miami, TX 79059 (806) 868-4661 or (806) 570-9554  
breeder@amaonline.com

### MESSNER HEREFORDS



Milton Messner (580) 837-5384  
Van Messner (580) 837-5532  
Route 1, Box 350 • Laverne, OK 73838



**Ezy-Lift**  
www.ezylift.com  
John Winsauer  
713.614.9005  
win@ezylift.com

Since 1908

### Pronger Brothers

Breeders of  
Registered Hereford Cattle  
Stratford, Texas 79084  
Phone: 806/769-4474 or 4473

### MILLIGAN HEREFORDS

Since 1919  
**Kings, IL 61068**  
Robert (815) 562-6391 James (815) 562-4946  
Malcolm (815) 562-5879

Livestock Insurance • Import • Export



### HOWARD MILLER, INC.

P.O. Box 122537 • Fort Worth, Texas 76121-2537  
Howard Miller 817/732-1872 David Miller  
Representing American Livestock Insurance Co.



### Quality Herefords For Sale

### SUMMEROUR RANCH

Allan Ricketson, Ranch Manager  
Res: 806-384-2177 • Cell: 806-333-0624  
806/384-2110 • 4438 FM 3212 • Dalhart, TX 79022



### PRAIRIE MEADOW HEREFORDS

2620 E. Lake Shore Drive • Springfield, IL 62707  
Office (217) 529-8878 • Fax (217) 529-9374  
Greg (217) 498-7095 • Gail (217) 529-4933  
Mark and Carla (217) 483-5651

### DUFUR HEREFORDS

P. O. Box 166 • Caddo, OK 74729  
Bill Dufur • 580-367-9910  
Alan Dufur • 580-775-3830



www.copelandherefords.com  
859 Romero Rd • Nara Visa, New Mexico  
Clifford Copeland • 575.633.2251  
Cliff Copeland • 575.403.8123  
Matt Copeland • 580.336.8284  
@copeland@plateautel.net



**1/5 HOFFMAN RANCH**  
modern, stout, functional  
P.O. Box 287 Thedford, NE 69166  
jason@hoffmanranch.com  
www.hoffmanranch.com  
Denny and Dixie Hoffman 530-336-5778  
Jason and Kaycee Hoffman 530-604-5096



### HOLDEN HEREFORDS

"The Best in Line 1 Breeding"  
**Jack and Tresha Holden**  
3139 Valier Dupuyer Rd. • Valier, MT 59486  
406-279-3301  
406-279-3300 Ranch • 406-450-1029 Mobile  
www.holdenherefords.com



### B & H Herefords

Phil Harvey, Jr. 575-524-9316  
Cell 575-644-6925  
P. O. Box 1566  
P. O. Box 40 Hope, NM 88250  
Mesilla, NM 88046 jbb@pvtnetworks.net  
Philharveyjr@comcast.net bhherefords.com

### LARGENT and SONS

Hereford Cattle Since 1902  
P.O. Box 66 • Kaycee, WY 82639  
307-738-2443 or 307-738-2297  
Sale Date: November 2013  
largentandsons@yahoo.com  
www.largentandsons.com

### S - W HEREFORDS

BENNINGTON, OK  
Ryan Westbrook 580-775-8053  
Neal Spencer 817-845-1382  
www.swherefords.com



# COMMERCIAL

Craig Curtis

## HayMaster™

Nutrition Injection Systems, Inc.

682.201.8026 • Toll Free 877.480.7870  
ccurtis.haymaster@gmail.com • www.haymastersystems.com  
Authorized dealer for HayMaster Nutrition Injection Systems, Inc.



**Mark & Teresa McClintock**

Registered Herefords • Sales and Consulting  
Mark (325) 650-4223 • Teresa (325) 763-9202  
10614 Mule Creek Road • San Angelo, TX 76901  
mcclintock@wcc.net • markandteresamcclintock.com

## JOHNSON

CATTLE MARKETING

Tom Johnson

440 FM 246 • Wortham, TX 76693  
903/599-2403 • cell: 817/291-5121



**Sunday, Feb. 3, 2013**



## Steele Embryo Service

**DR. MARK E. STEELE**

Embryo Transfer,  
Freezing, Sales  
126 Fawn Trail  
Graham, TX 76450  
(940) 549-8117  
(940) 549-2936  
(940) 704-2253 Mobile

**REGER BREEDING SERVICE**

Donor & Recipient  
Management  
**GARY & HARRIETT REGER**  
HC 60 Box 315  
Graham, TX 76450  
(940) 549-0919 Fax  
(940) 521-1291 Mobile

**Midcontinent Livestock Supplements**  
**MLS Forage Enhancing Program**

[www.mlstubs.com](http://www.mlstubs.com)



Kyle Latham  
254-715-2162  
Valley Mills, TX

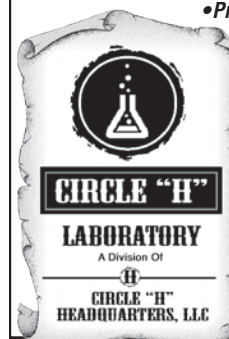
## Circle H Headquarters, LLC

•Pregnancy ELISA testing

•BVD PI testing

•NIR Feed &

Forage Testing



**C. Scanlon Daniels, DVM**  
PO Box 1150  
3216 US Hwy 54 East  
Dalhart, TX 79022  
806-244-7851 office  
806-333-2829 cell  
806-244-7852 fax  
[www.circleh.info](http://www.circleh.info)  
[scanlon@circleh.info](mailto:scanlon@circleh.info)

44th Annual  
**Whiteface Replacement**  
**FEMALE SALE**  
**Sunday, February 3, 2013**

Pre-press production of *Texas Hereford*  
magazine since 1995



*We'll make you*  
*look great on paper.*

Park Place Enterprises, Inc.  
817-877-8901 • [ggpark@flash.net](mailto:ggpark@flash.net)



Gorman Milling Co., Inc.

Manufacturer of

Red Chain Feeds

Gorman, TX

(800) 588-2252

[REDCHAINFEEDS.COM](http://REDCHAINFEEDS.COM)

## events **CALENDAR**



### 2013

**Jan. 4:** Sandhills Hereford Show, Odessa

**Jan. 17-19:** National Western Stock Show, Denver, CO

**Jan. 26:** Junior Hereford Heifer Show, Fort Worth

**Feb. 2:** THA Annual Meeting, Fort Worth

**Feb. 2:** Messner Herefords Production Sale, Slapout, OK

**Feb. 2:** South Texas Hereford Assn. Sale, Beeville

**Feb. 2:** Upstream Ranch Annual Production Sale,  
Taylor, NE

**Feb. 3:** THA Whiteface Replacement Female Sale  
Cowtown Select Sale, Fort Worth

**Feb. 4:** National Hereford Show, Fort Worth

**Feb. 11:** S.A.L.E. Open Hereford Show, San Antonio

**Feb. 13:** S.A.L.E. All Breed Bull & Female Sale, San Antonio

**Feb. 15:** S.A.L.E. Junior Combined Hereford Show,  
San Antonio

**Feb. 15:** Hoffman Ranch First Annual Bull Sale,  
Thedford, NE

**Feb. 17:** San Angelo Junior Hereford Heifer Show,  
San Angelo

**Feb. 20:** S.A.L.E. Hereford Steer Show, San Antonio

**Feb. 25:** Houston Open Hereford Show, Houston

**Feb. 25:** Colyer Herefords Production Sale, Bruneau, ID

**Feb. 26:** Mill Creek-Pied Piper Sale, Alma, KS

**Feb. 27:** Houston All Breed Bull Sale, Houston

**Mar. 2:** Houston All Breed Female Sale, Houston

**Mar. 9:** The Black Hereford Sale, Alvarado

**Mar. 9:** NE Texas Hereford Assn. Sale, Mt. Pleasant

**Mar. 10:** Houston Junior Hereford Heifer Show, Houston

**Mar. 11:** Holden Herefords Production Sale, Valier, MT

**Mar. 12:** Cooper Hereford Ranch Production Sale,  
Willow Creek, MT

**Mar. 13:** Houston Hereford Steer Show, Houston

**Mar. 22-24:** TSCRA Convention, Fort Worth

**Mar. 23:** Cross Timbers Hereford Sale, West

**Apr. 6:** MW Herefords Production Sale, Brownwood

**Apr. 6:** GKB Cattle Internet Sale, Waxahachie

**Apr. 8:** C&M Herefords 1st Annual Bull Sale,  
Nara Visa, NM

**Apr. 27:** THA Fish & Snips Concert in the Barn, Salado

**June 19-22:** Texas Junior Hereford Association  
Combined State Show, Belton

**July 14-20:** 2013 Junior National Hereford Expo,  
Kansas City, MO

**Aug. 5-7:** Beef Cattle Short Course, College Station

Alpha Equine Breeding Center	40	Gordon Ranch, W. K.	40	Muleshoe Ranch	40
Atlas Farms	26, 39	Gorman Milling Co., Inc.	37, 43	Neel, Jr., George E.	40
B&C Cattle Co.	42	Grett, Harry & Cheryl	39	Nelson, Jim	39
B&H Herefords	42	Grubbs Cattle Co.	24	Noack, Leon	39
Barber Ranch	42	H Ranch	15	Nolan, Scott	3, 39
Barnes & Sons, Randall	39	H2 Ranch and Cattle Co.	39	NE Texas Hereford Assn.	10
Barnes, Tommy	42	HayMaster	43	Park Place Enterprises	43
Bar S Herefords (Larry Schatte)	39	Henson, Clyde	41	Pied Piper Farms	30, 41
Bell Farms, Jim G.	39	Herrmann Cattle Co.	39	Powell, James L.	41
Bragg, Mike & LaReshia	42	Hidden Oaks Ranch	40	Prairie Meadow Herefords	42
Brandon Farms	15	High Country Plastics	44	Pronger Bros.	42
Brainard Cattle Co.	11	Hoffman Ranch	29, 42	Pullen, Jackie	39
Brumley Farms	26	Holden Herefords	42	Rafter J Cattle Co.	22, 41
BT Cattle Co.	39	Howard Herefords	40	Rockin' W Polled Herefords	40
Buchholz, Gary and Kathy	39	Hutchison, Newly	14	Rocking Chair Ranch	41
C&M Herefords	19, 42	Indian Mound Ranch	42	S-W Herefords	25, 42
Carroll, L.J. (C2 Cattle Co.)	40	Iron Lake Ranch	23	San Antonio Livestock Show	36
Carver Herefords	41	Jackson Hereford Ranch	15, 40	Schacher Auction Services	42
Casas, III, Leo	42	JC Cattle Co.	20	Scharbauer Ranch LLC	41
Case Ranch	41	Johnson Cattle Marketing	43	Schlegel, R. & Sons	40
Circle H Labs	43	Johnson, Pete	39	Silveus Insurance	42
Circle M Ranch	40	Knox TY Herefords	41	Sjolander Ranches	40
Coates Ranch Co.	41	Lang, Roland	40	Skrivanek Ranches	39
Colyer Herefords	31	Largent & Sons	3rd Cover, 42	South Texas Hereford Assn.	6
Cooper Hereford Ranch	42	Larson Polled Herefords	39	Spearhead Ranch	40
Copeland Herefords & Sons LLC	42	Lee, Ira	41	Steele Embryo	43
Covered M Ranch	40	Lesley Herefords	40	Still River Ranch	39
Dangelmayr Bros.	11	Locklear, Ward (MW Herefords)	9, 40	Stone Manufacturing	37
Darnell, Jim	11, 41	Lone Star Herefords	40	Stuart, Brad	41
Dauer Herefords	15	McClatchy Eagle Hereford Ranch	39	Summerour Ranch	14, 42
Davis, Paul	39	McClintock, Mark & Teresa	43	Terrell, Lee	39
Debter Hereford Farm	42	McInnis Cattle Co.	41	The Black Hereford Sale	7
Decker Cattle Service	39	McKnight Ranch Co.	41	Theuret, Wesley	40
Dominey, Sam	39	McMullin Ranch	8, 10	Triple L Ranch	6
Double Heart Diamond Cattle Co.	27	Mann Cattle Co.	18, 41	Turner, Cole & Susan	41
Doyle Hereford Ranch	39	Massey Hereford Ranch	41	Upstream Ranch	28
Dudley Bros.	4th Cover, 40	Mathias, Kurtis	39	W4 Ranch	16
Dufur Herefords	42	Messner Herefords	5, 42	Walker Herefords	41
Eckert, Miles & Mary	41	Metch Polled Herefords	39	Weinheimer Ranch, Inc.	41
Edgar Hereford Ranch	11, 40	Mezger, Jeff (Honeymoon Herefords)	41	Williams Family Herefords	39
Ellard, Jo	42	Midcontinent Livestock Supplements	37, 43	Wilson, Ross	40
Estes Ranch, Button	41	Mill Creek Ranch	30	Winsauer Herefords	40
Ezy-Lift	42	Miller, Howard	42	Y Tex Corp.	38
Flying 'S' Herefords	40	Milligan Herefords	14, 42	Youngblood, Arlan	41
Fuston Herefords	14, 41	Mimms Herefords	21, 41	Younts & Son, Curtis	1st Cover, 1, 40
Gibbs, W. Paris	39	Mockingbird Hill	40		



**W SERIES**  
made in USA

Gallon Sizes:  
W-35  
W-55  
W-75  
W-100  
W-150  
W-300  
W-350  
W-700

All water tanks 100 gallon and larger come with a molded-in leak-proof aluminum insert drain

**LIMITED 5 YEAR WARRANTY**

**Slow Feeder Saver** **NEW ITEM**

**HIGH COUNTRY PLASTICS™**

Corporate  
Caldwell, ID  
800.388.3617  
www.highcountryplastics.com



# MUSCLE UP **RIGHT NOW!**



**L3 Desert Diamond 115** [DLF, HYF, IEF] • 43162638 • 12/2/10

**Champion 2012 Wyoming Field Day • Supreme Champion 2012 Colorado State Fair  
Reserve Senior Champion 2012 Junior Nationals**

Possibly the most natural muscle in the breed today! A rare combination of King Ten/Canadian/Line One genetics that is super moderate and super clean. Also has tremendous scrotal development along with having a perfect uddered dam that is headed for our donor line-up this spring!

UPS DOMINO 3027 [CHB,DLF,HYF,IEF]  
**SIRE:** L3 DIAMOND 679 [DLF,HYF,IEF]  
L3 DUSTY LADY 339  
  
CL 1 DOMINO 5131E [SOD,DLF,IEF]  
**DAM:** L3 LADY DOMINO 907 [DLF,IEF]  
L3 LADY RAZOR 112

CL 1 DOMINO 9126J 1ET [SOD,CHB,DLF,IEF]  
UPS MISS DIAMOND 1353  
GH DUSTY LAD ET 188G  
L3 LADY EDGE 853  
CL 1 DOMINO 166 [SOD]  
CL 1 DOMINETTE 0046  
L3 DESERT EDGE 886 [DLF,HYF,IEF]  
L3 GENETIC LADY 124

EPDs	CED	BW	WW	YW	MILK	M&G	CEM	MCW	SC	FAT	REA	MARB	BMI	CEZ	BII	CHB
	+1.5	+4.0	+44	+80	+24	+46	+0.6	+83	+0.6	-0.005	+0.28	+0.06	+\$14	+\$15	+\$12	+\$22

**Semen \$25 per straw • \$60 Certificates**

## LARGENT AND SONS

*Hereford cattle since 1902*

P.O.Box 66

Mark & Cathy: 307-738-2443  
Mark's cell: 307-267-3229

**Kaycee, WY 82639**

Fax: 307-738-2297  
Dave's cell: 307-267-4491

*10 miles south of I-25*

e-mail: [largentandsons@yahoo.com](mailto:largentandsons@yahoo.com) • website: [www.largentandsons.com](http://www.largentandsons.com)

# From all the Dudleys...



*We wish everyone a  
Happy New Year and  
Prosperous 2013*

**Annual Bull Sale  
October 10, 2013**



**DUDLEY BROS.**

BOX 10 • COMANCHE, TEXAS 76422

Office 325-356-2284 • Fax 325-356-3185

John 325-356-3767 • Cell 325-642-0745

Tom 325-356-3918 • Cell 325-642-0748

Dudleybros@comanchetx.com • www.dudleybros.com